

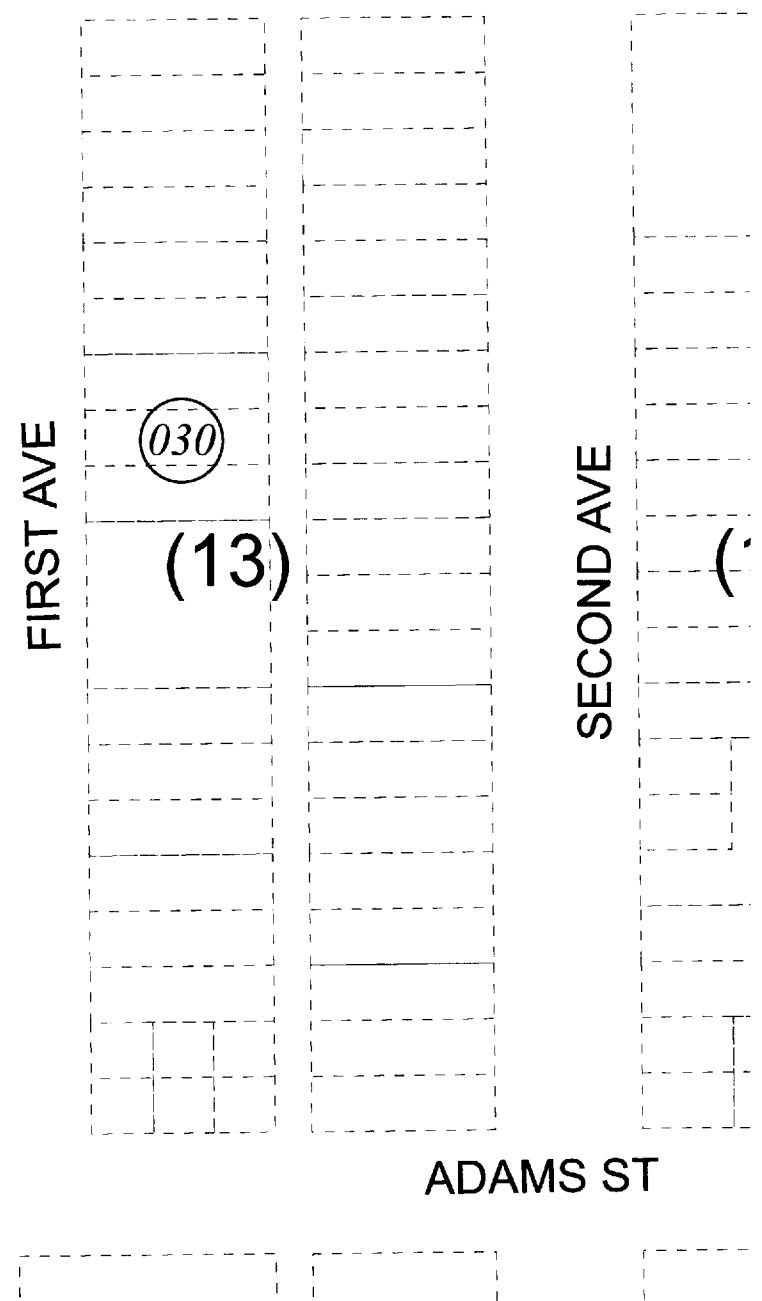
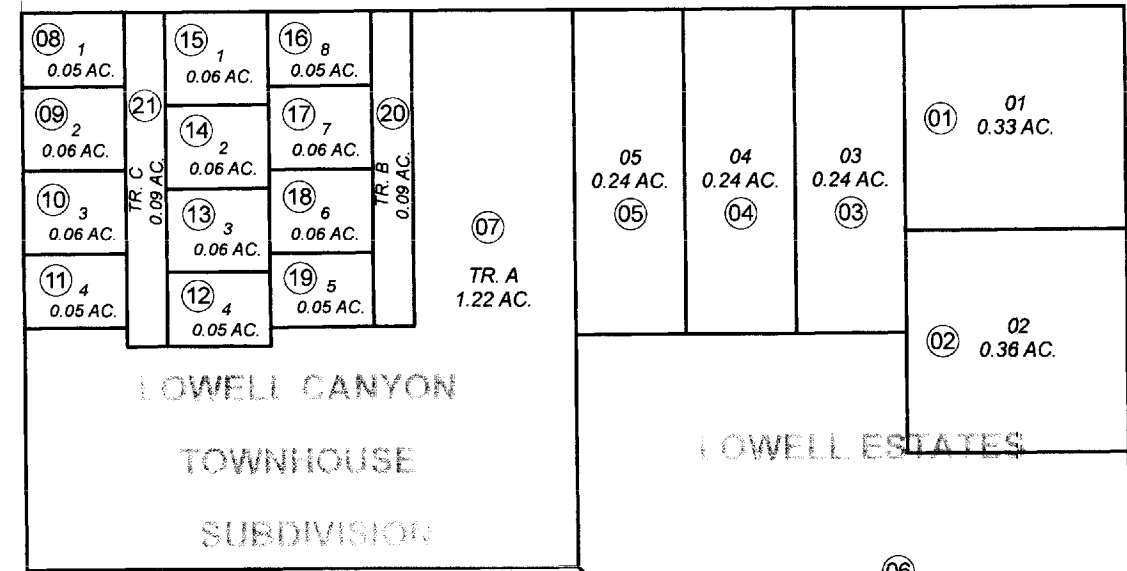
POR. SEC. 9 & 10, T01S, R01W, S.M.

BK
148

149-210

LOWELL CANYON RD

JEFFERSON ST



BK
148

SEC. 9
SEC. 10

JULY 6, 2010

For 2011 assessment roll		
Delete	Add	Revise
	To	
	20,21	



Assessor's Map
Kenai Peninsula Borough

LOWELL ESTATES SUB SW0000066
LOWELL CANYON TOWNHOUSE SUB SW0820011

This map is prepared for Kenai Peninsula Borough Assessing Dept. use only and is not intended for conveyance nor is it a survey.
Note- Assessor's block Numbers Shown in Ellipses
Assessor's Parcel Numbers Shown in Circles