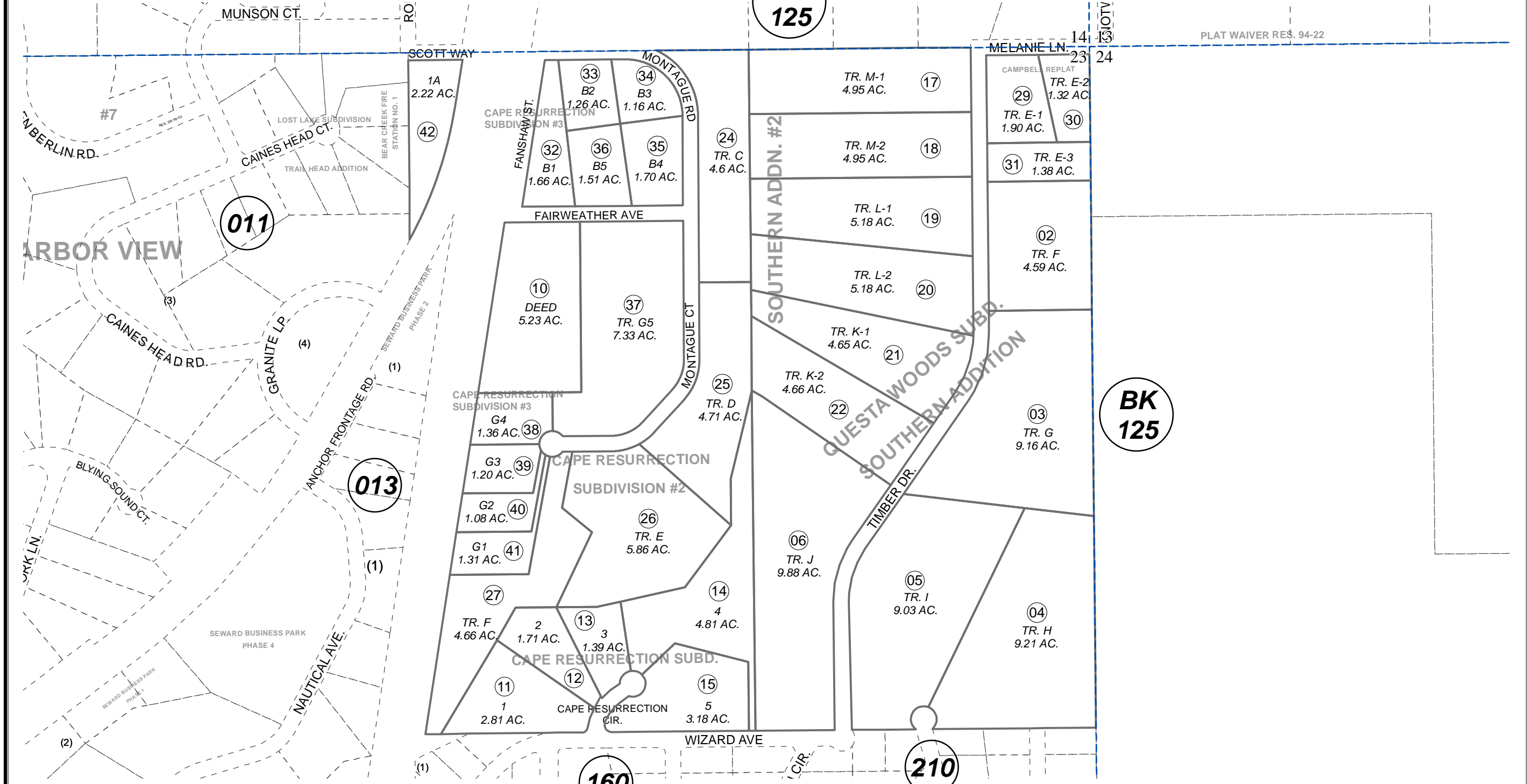


POR. SEC. 23, T01N, R01W, S.M.

BK
125

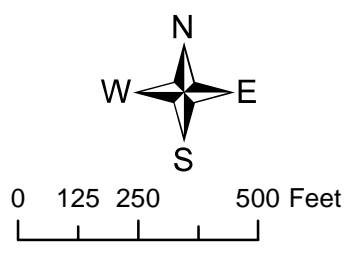
144-012

PLAT WAIVER RES. 94-22



AUGUST 7, 2013

For 2014 assessment roll		
Delete	Add	Revise
To		
	42	



Assessor's Map
Kenai Peninsula Borough

QUESTA WOODS SUB SOUTHERN ADDN SW0980001
 CAPE RESURRECTION SUB SW0980008
 QUESTA WOODS SUB SOUTHERN ADDN # 2 SW0990011
 CAPE RESURRECTION SUB #2 SW2006019
 QUESTA WOODS SUB SOUTHERN ADDN CAMPBELL REPLAT SW2007012
 CAPE RESURRECTION SUB #3 SW2008005
 BEAR CREEK FIRE STATION 2013 REPLAT SW2013005

This map is prepared for Kenai Peninsula Borough Assessing Dept. use only and is not intended for conveyance nor is it a survey.
 Note- Assessor's block Numbers Shown in Ellipses
 Assessor's Parcel Numbers Shown in Circles