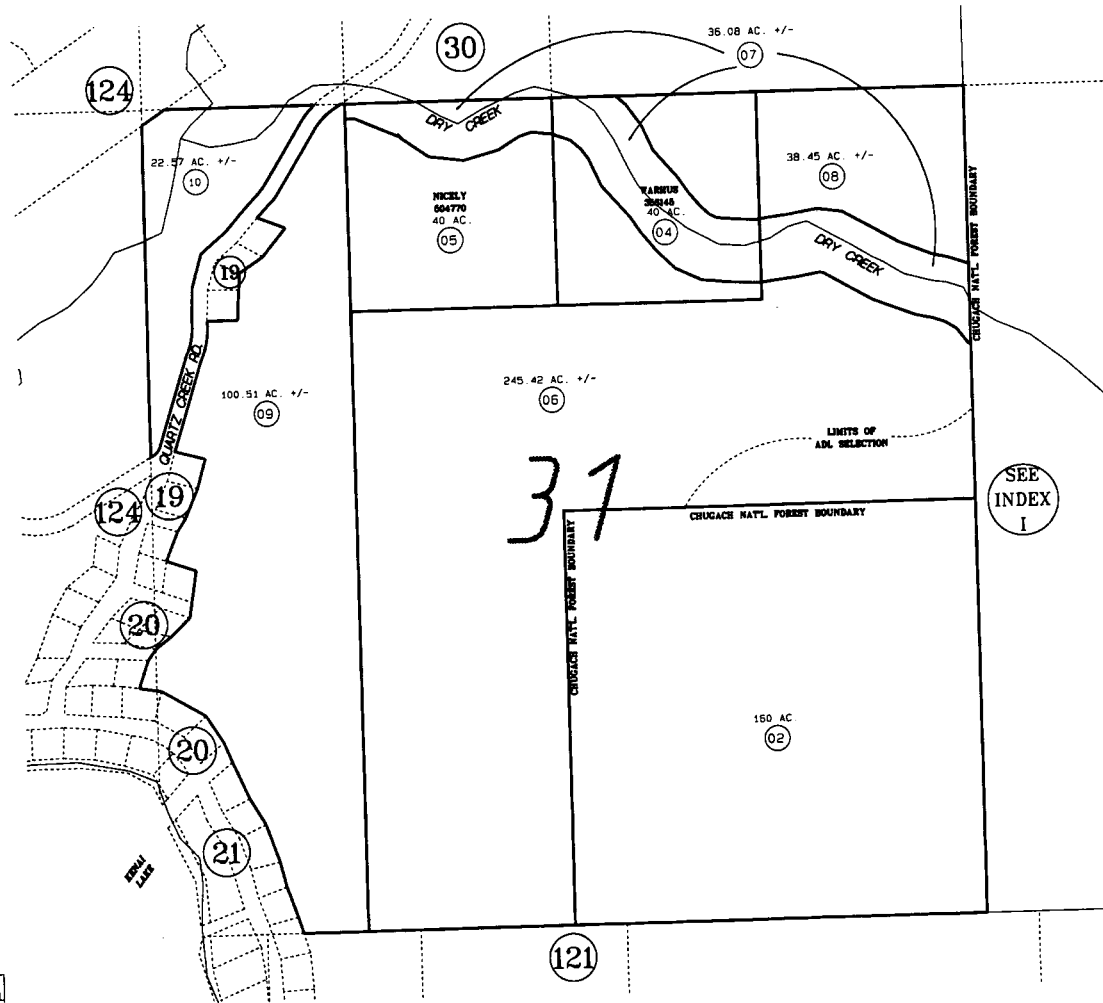


SEC. 31, T5N, R2W,

SEWARD MERIDIAN

119-123



DATE: OCT. 23, 1998

FOR 19 99 ASSESSMENT ROLL		
DELETE	ADD	REVISED
	TO	
1	6-10	

Assessor's Map
Kenai Peninsula Borough

THIS MAP IS PREPARED
FOR KENAI PENINSULA
BOROUGH ASSESSING DEPT.
USE ONLY AND IS NOT
INTENDED FOR ANY
OTHER USE OR REPRESENTATION

NOTE - Assessor's Block Numbers Shown In Ellipses
Assessor's Parcel Numbers Shown In Circles