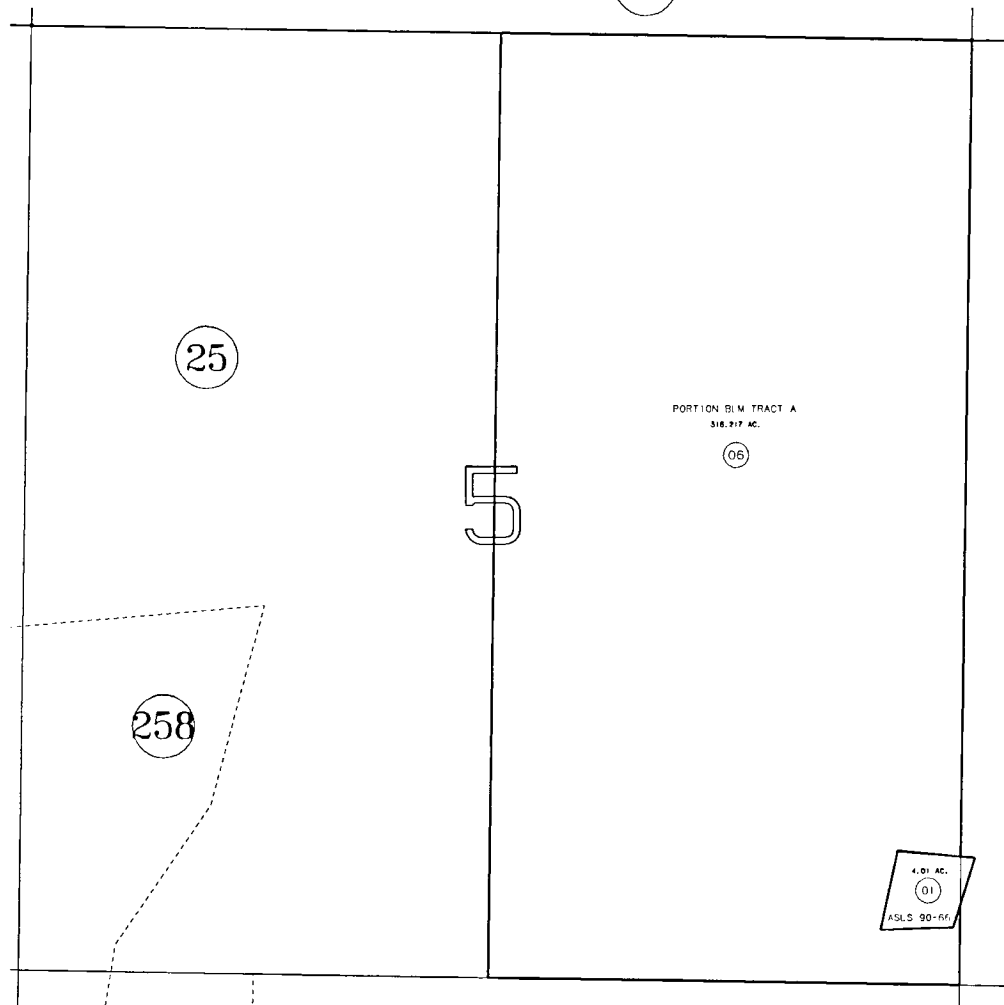


E 1/2 SECTION 5 & PORTION SECTION 4, T4S, R10W, SEWARD MERIDIAN

185-254

12



DATE AUGUST 12, 1993

FOR 19 94 ASSESSMENT ROLL		
DELETE	ADD	REVISED
TO		
06		

ALASKA STATE LAND SURVEY 90-66

11M910009

253

NOTE - Assessor's Block Numbers Shown In Ellipses
Assessor's Parcel Numbers Shown In Circles

Assessor's Map
Kenai Peninsula Borough

THIS MAP IS PREPARED FOR KENAI PENINSULA BOROUGH ASSESSING DEPT. USE ONLY AND IS NOT INTENDED FOR ANY OTHER USE OR REPRESENTATION