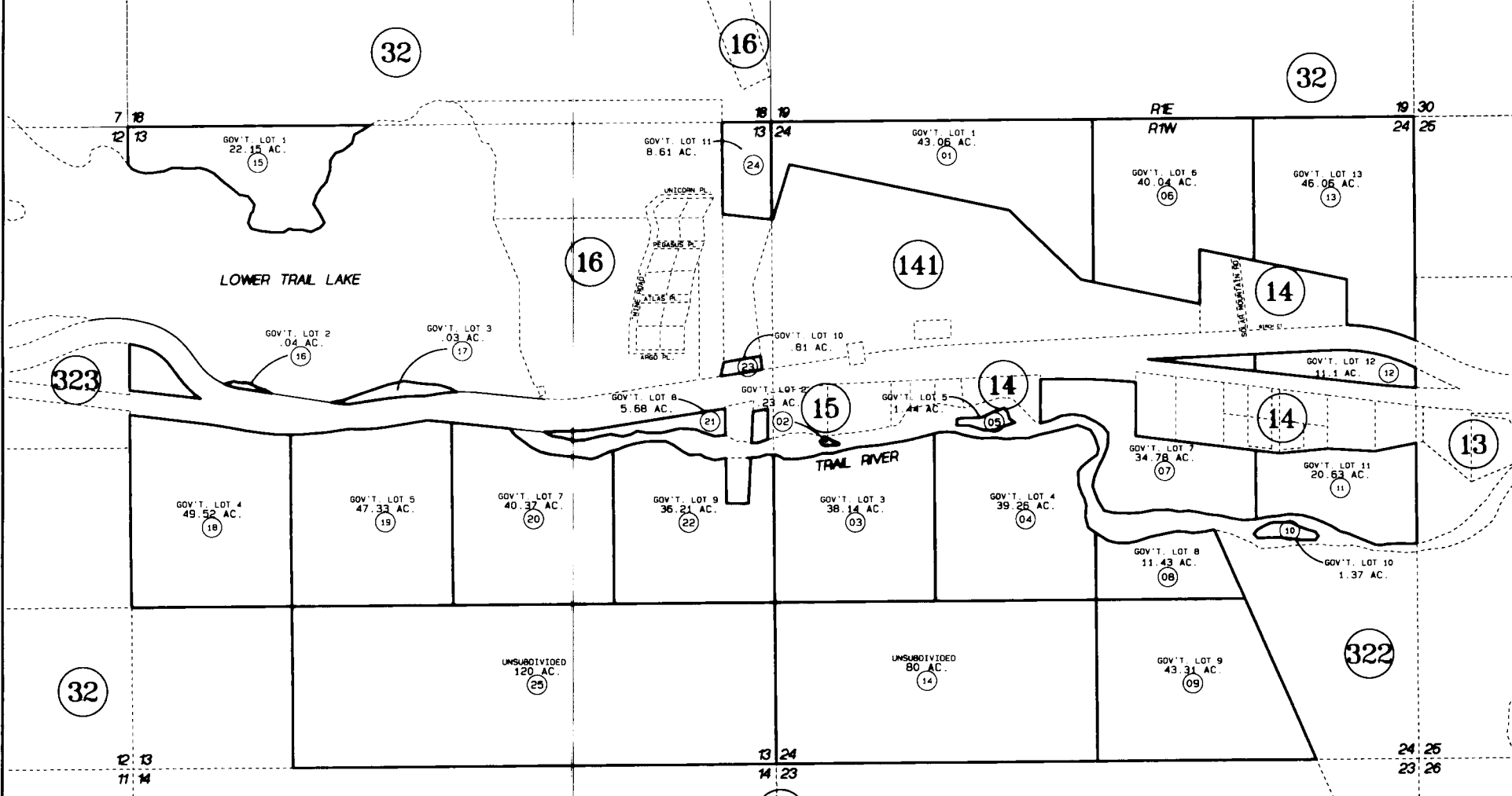


SEC. 13 & 24, T4N, R1W, SEWARD MERIDIAN

125-324



DATE MARCH 7, 1997
 FOR 19 97 ASSESSMENT ROLL
 DELETE ADD REVISED



TO NO CHANGES

Assessor's Map
 Kenai Peninsula Borough

THIS MAP IS PREPARED FOR KENAI PENINSULA BOROUGH ASSESSING DEPT. USE ONLY AND IS NOT INTENDED FOR ANY OTHER USE OR REPRESENTATION

NOTE - Assessor's Block Numbers Shown In Ellipses
 Assessor's Parcel Numbers Shown In Circles