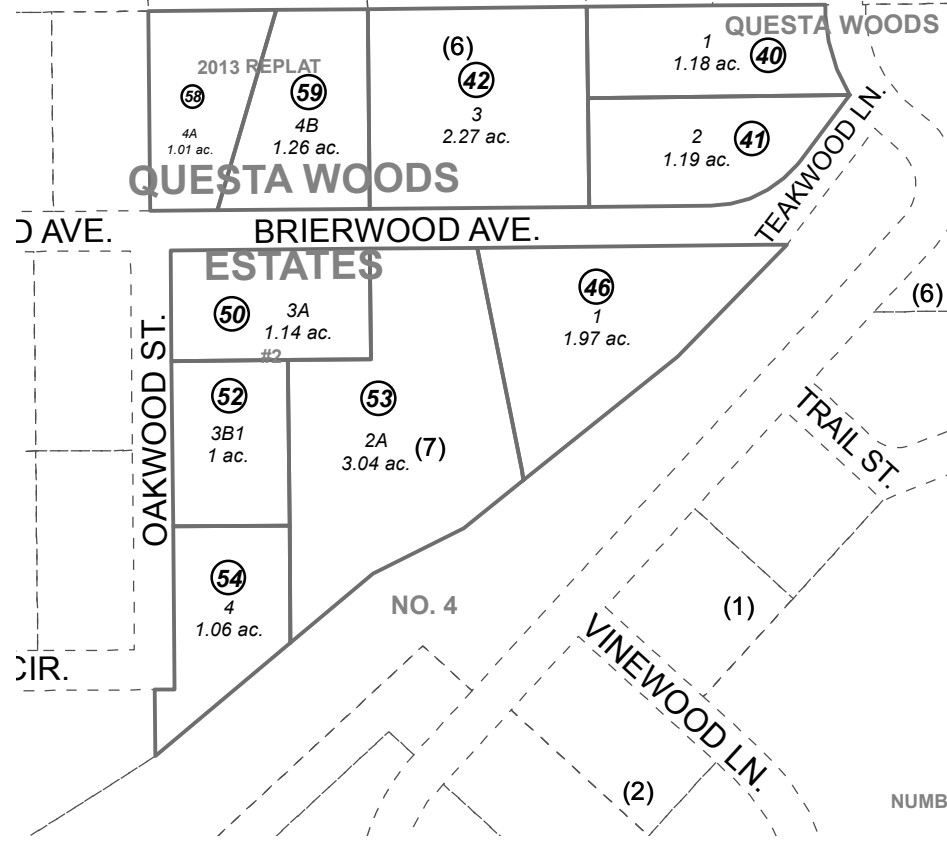


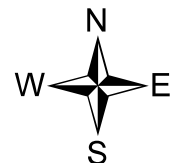
POR. SEC. 12-14, T01N, R01W, S.M.

125-010



DETAIL

QUESTA WOODS ESTATES SUB SW0940013
 QUESTA WOODS ESTATES #2 SW0970004
 QUESTA WOODS ESTATES NO 4 SW0990019
 QUESTA WOODS ESTATES #6 SW2003014
 QUESTA WOODS ESTATES 2013 REPLAT SW2013009



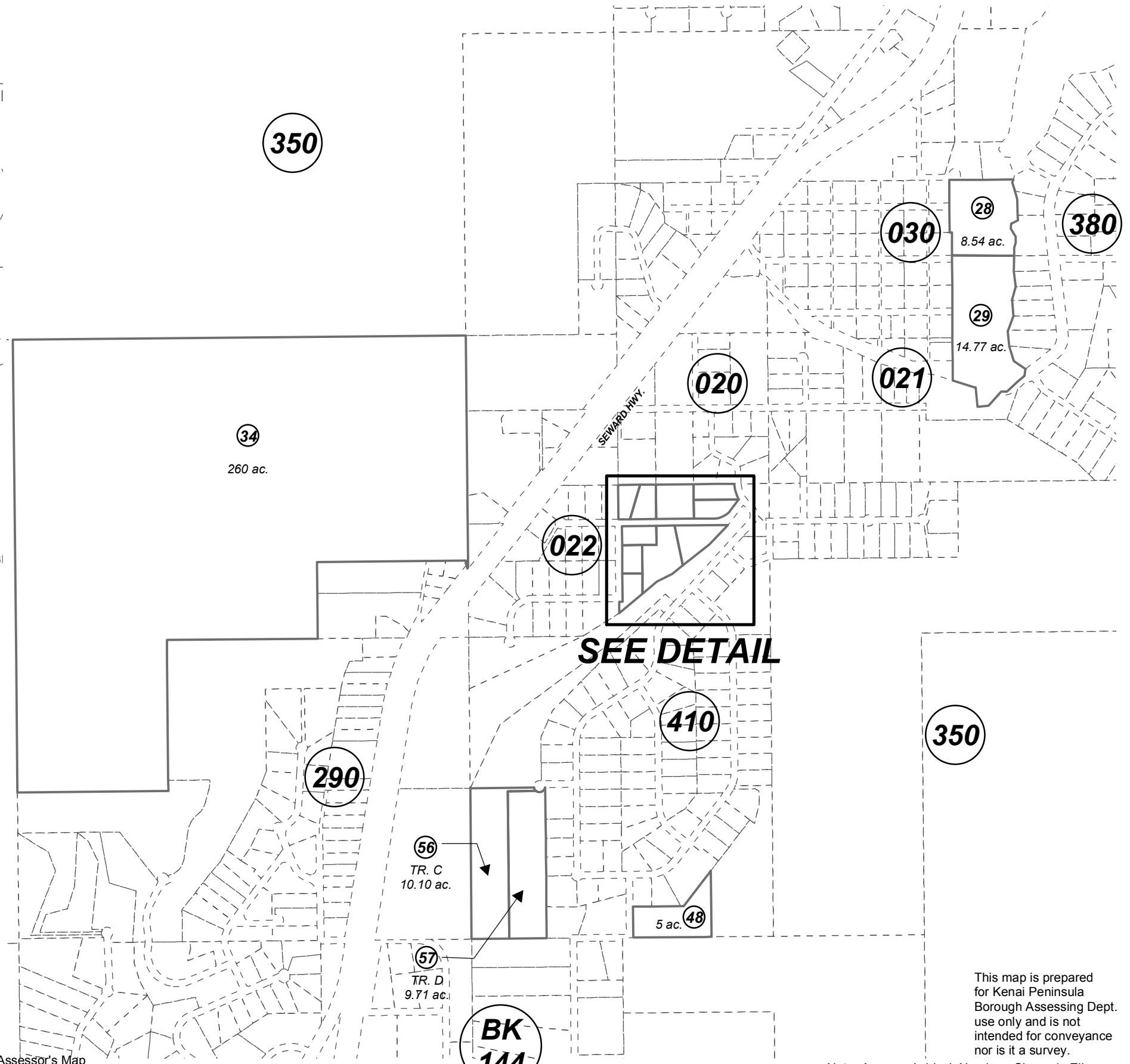
0 250 500 1,000 Feet

SEPTEMBER 14, 2018

For 2019 assessment roll

Delete	Add	Revise
To		29
(ACREAGE CHANGE)		

Assessor's Map
Kenai Peninsula Borough



SEE DETAIL

This map is prepared for Kenai Peninsula Borough Assessing Dept. use only and is not intended for conveyance nor is it a survey.

Note- Assessor's block Numbers Shown in Ellipses
Assessor's Parcel Numbers Shown in Circles