

137-250

POR, NE1/4, SEC. 1, T02N, R12W, S.M.

TUBBS/ CRAIG
REPLAT

BK
133

UBD.

021

251

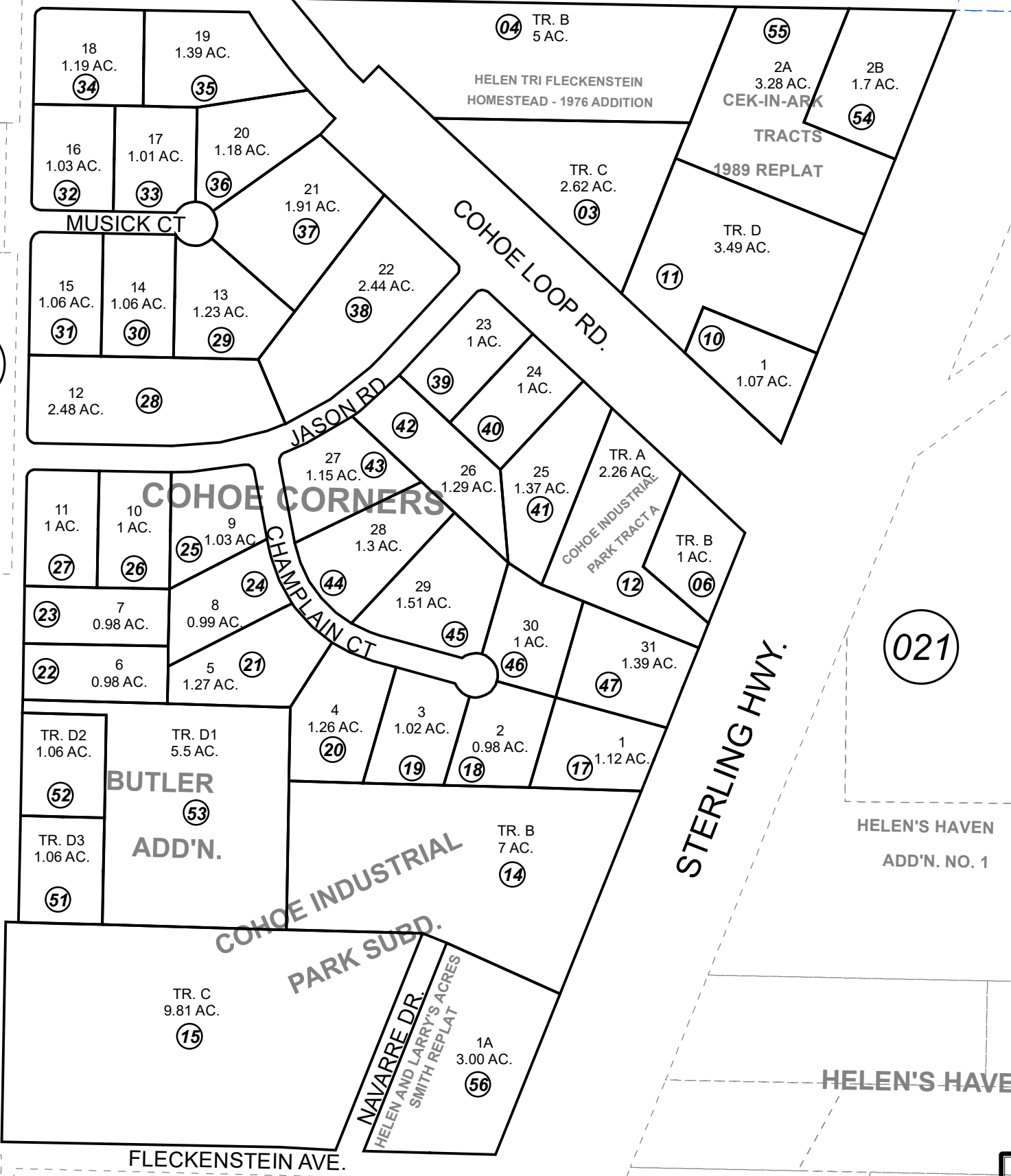
021

260

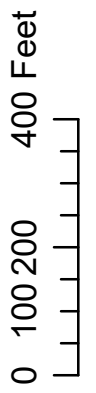
COLLINS DR.

FRANK'S SUBD.

CEKIN CT.



- KN0001693 HELEN & LARRY'S ACRES SUB
- KN0760084 HELEN & LARRY'S ACRES SUB
- KN0770012 HELEN TRI FLECKENSTEIN HOMESTEAD SUB
- KN0810025 FLECKENSTEIN DEED OF RECORD BOUNDARY SURVEY
- KN0820001 COHOE INDUSTRIAL PARK SUB
- KN0850118 COHOE CORNERS SUB
- KN0860220 COHOE INDUSTRIAL PARK SUB BUTLER ADDN
- KN0890023 CEK-IN-ARK TRACTS SUB 1989 REPLAT
- KN2018058 HELEN & LARRY'S ACRES SUB SMITH REPLAT



For 2019 assessment roll	
Delete	Revise
To	56
07-09	

This map is prepared for Kenai Peninsula Borough Assessing Dept. use only and is not intended for conveyance nor is it a survey.

Note- Assessor's block Numbers Shown in Ellipses Assessor's Parcel Numbers Shown in Circles

Assessor's Map
Kenai Peninsula Borough

ATKINSON
WIRTH 1988
NO.2, TR. B-4

ATKINSON SUBD. NO. 2

STEELE REPLAT

HELEN'S HAVEN
ADD'N. NO. 1

BUTLER
ADD'N.

COHOE INDUSTRIAL
PARK SUBD.

COHOE CORNERS

COHOE LOOP RD.

JASON RD.

MUSICK CT.

CHAMPLAIN CT.

COHOE INDUSTRIAL
PARK TRACT A

STERLING HWY.

HELEN TRI FLECKENSTEIN
HOMESTEAD - 1976 ADDITION

CEK-IN-ARK
TRACTS
1989 REPLAT

NAVARRE DR.
HELEN AND LARRY'S ACRES
SMITH REPLAT

FLECKENSTEIN AVE.