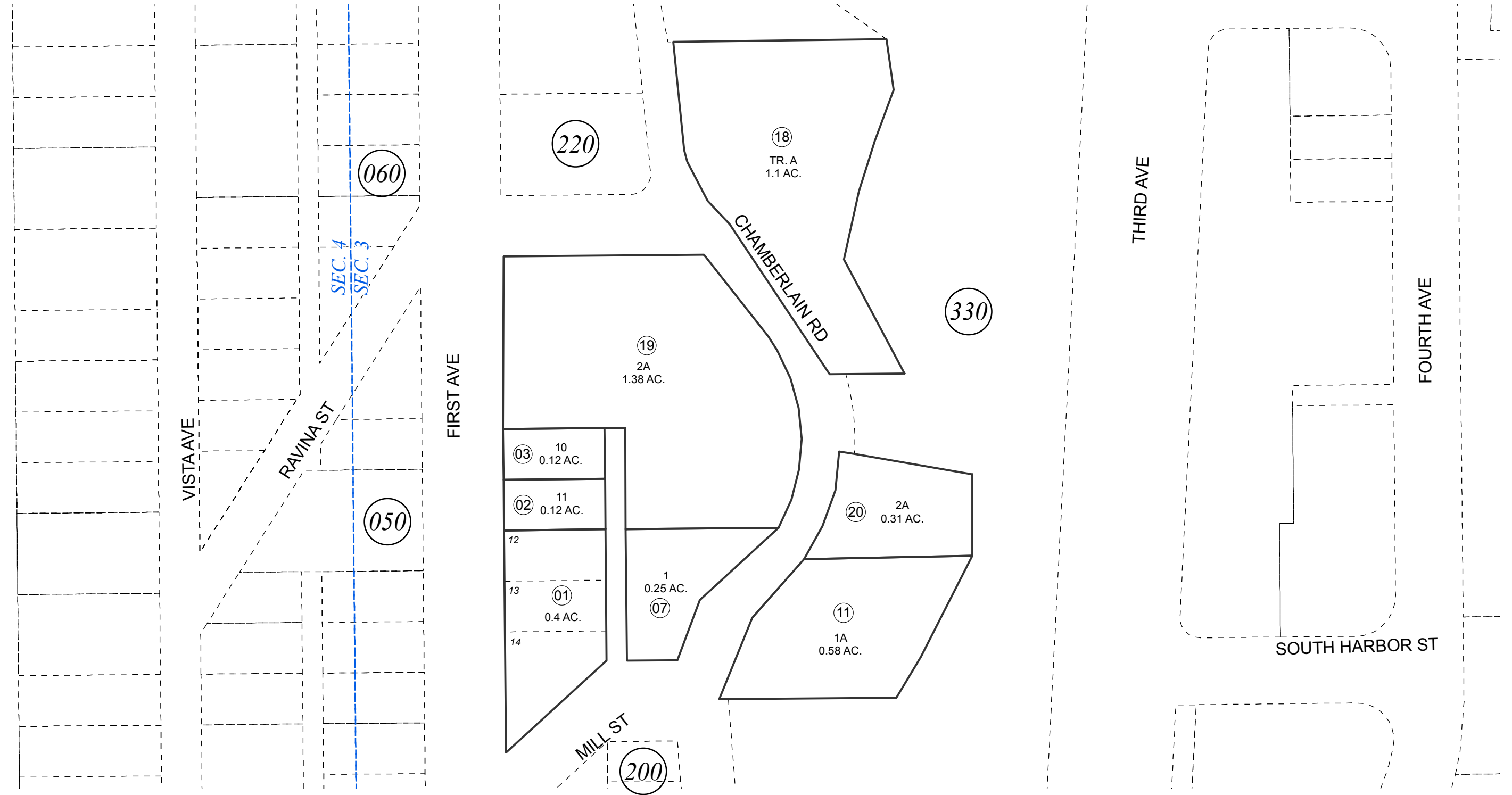


POR. SEC. 3, T01S, R01W, S.M.

147-210



AUGUST 9, 2016



0 25 50 100 Feet

For 2017 assessment roll		
Delete	Add	Revise
To		
21	147-330+	

Assessor's Map
Kenai Peninsula Borough

ORIGINAL TOWNSITE OF SEWARD CLIFF ADDN SW0000003
 SEWARD TOWNSITE CLIFF ADDN SW0860002
 SEWARD TOWNSITE CLIFF ADDN REPLAT LOT 1 BLOCK 12 SW0870026
 SEWARD TOWNSITE CLIFF ADDN CHAMBERLAIN RD REPLAT SW0930003

This map is prepared for Kenai Peninsula Borough Assessing Dept. use only and is not intended for conveyance nor is it a survey.
 Note- Assessor's block Numbers Shown in Ellipses
 Assessor's Parcel Numbers Shown in Circles