

PORTION SECTION 10, T1S, R1W, S.M.

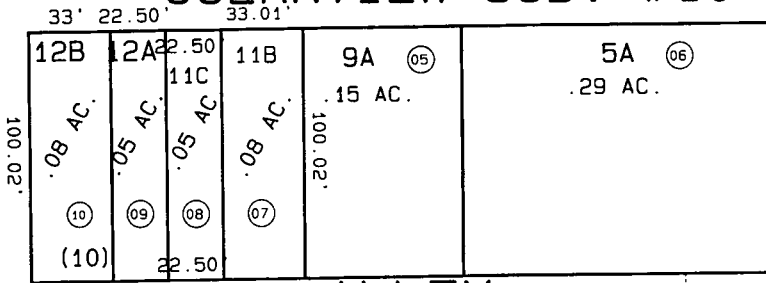
147-280

23

24

B ST.

FIFTH AVE.
OCEANVIEW SUB. #10



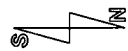
BK
148

A ST.

ALLEY

OCEANVIEW SUB.
ADDN. #11

32



DATE: OCT. 8, 1999

FOR 2000 ASSESSMENT ROLL		
DELETE	ADD	REVISED
1,4	7-10	

Assessor's Map
Kenai Peninsula Borough

FEDERAL ADDN. TO SEWARD ALASKA USS 1116 SW000004
OCEANVIEW SUBDIVISION ADDITION #10 SW940018
OCEANVIEW SUB ADDN # 11 SW990009

THIS MAP IS PREPARED
FOR KENAI PENINSULA
BOROUGH ASSESSING DEPT.
USE ONLY AND IS NOT
INTENDED FOR CONVEYANCE
NOR IS IT A SURVEY

NOTE - Assessor's Block Numbers Shown In Ellipses
Assessor's Parcel Numbers Shown In Circles