

OLD MILL SUBDIVISION

21
11 12

350

350

033

033

SEPTEMBER 22, 2016

For 2017 assessment roll

Delete Add Revise

To

90
(ACREAGE
CHANGE)

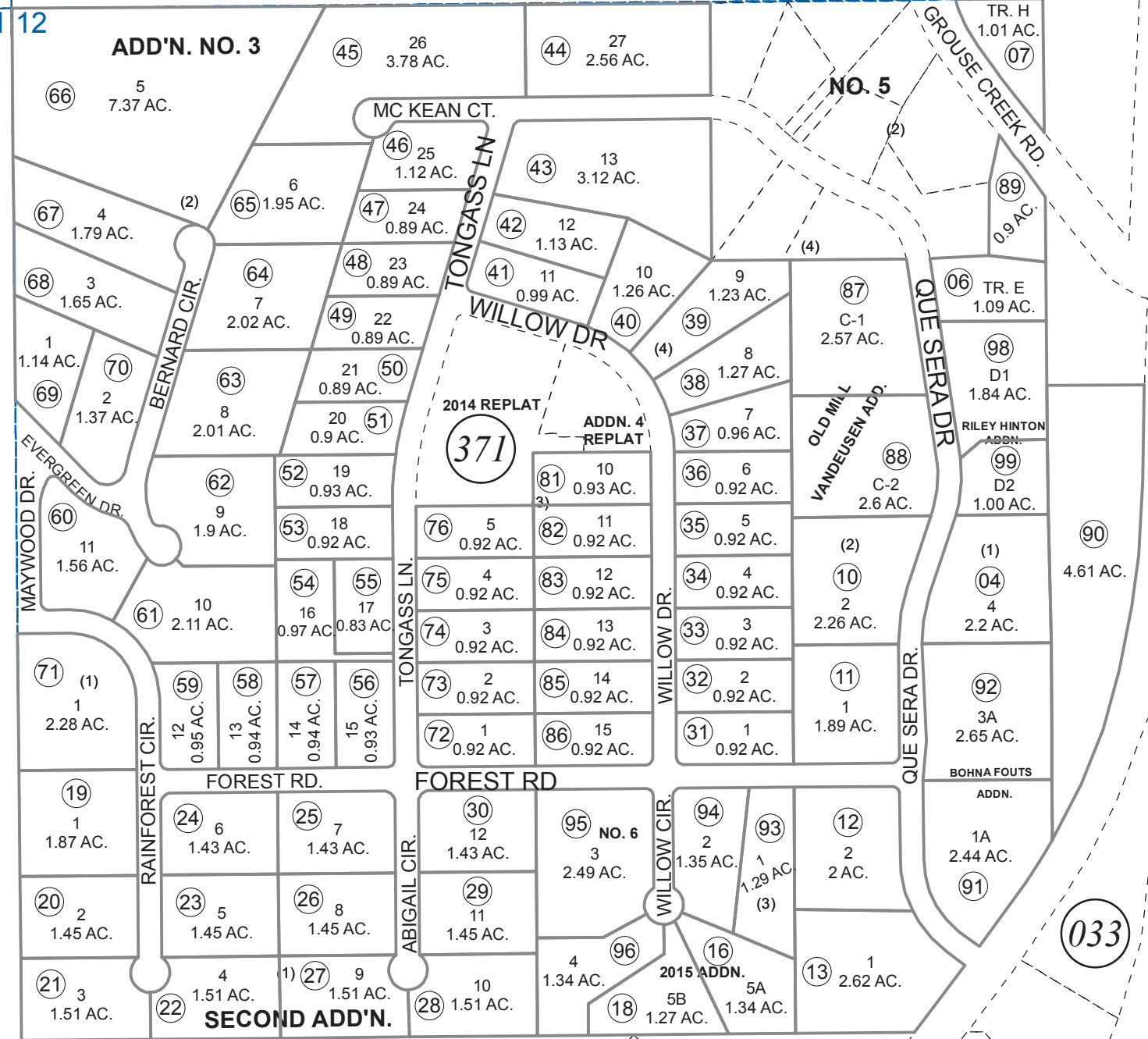
Assessor's Map
Kenai Peninsula Borough

OLD MILL SUB SW0740205
OLD MILL TRACT SECOND ADDN SW0780009
OLD MILL ADDN 3 SW0820016
OLD MILL VANDEUSEN ADDN SW0840017
OLD MILL BONHA FOUTS ADDN SW0960031
OLD MILL NO 6 SW0970019
OLD MILL SUB 2015 ADDN SW2015016
OLD MILL SUB RILEY HINTON ADDN SW2016006

Note- Assessor's block Numbers Shown in Ellipses
Assessor's Parcel Numbers Shown in Circles



0 100 200 400 Feet



SEWARD HWY

GROUSE CREEK RD.

QUE SERA DR.

QUE SERA DR.

VANDEUSEN ADD.

OLD MILL

ADDN. 4 REPLAT

2014 REPLAT

SECOND ADD'N.

ADD'N. NO. 3

NO. 5

NO. 6

2015 ADDN.

TR. H 1.01 AC.

TR. E 1.09 AC.

C-1 2.57 AC.

C-2 2.6 AC.

BOHNA FOUTS ADDN.

1A 2.44 AC.

3A 2.65 AC.

2 2.2 AC.

4 2.2 AC.

1 1.89 AC.

2 2.26 AC.

3 0.92 AC.

4 0.92 AC.

5 0.92 AC.

6 0.92 AC.

7 0.96 AC.

8 1.27 AC.

9 1.23 AC.

10 1.26 AC.

11 0.99 AC.

12 1.13 AC.

13 3.12 AC.

24 0.89 AC.

25 1.12 AC.

26 3.78 AC.

27 2.56 AC.

5 7.37 AC.

4 1.79 AC.

3 1.65 AC.

1 1.14 AC.

2 1.37 AC.

7 2.02 AC.

8 2.01 AC.

9 1.9 AC.

10 2.11 AC.

11 1.56 AC.

12 0.95 AC.

13 0.94 AC.

14 0.94 AC.

15 0.93 AC.

16 0.97 AC.

17 0.83 AC.

18 0.92 AC.

19 0.93 AC.

20 0.92 AC.

21 0.89 AC.

22 0.89 AC.

23 0.89 AC.

24 0.89 AC.

25 1.12 AC.

30 1.43 AC.

31 0.92 AC.

32 0.92 AC.

33 0.92 AC.

34 0.92 AC.

35 0.92 AC.

36 0.92 AC.

37 0.96 AC.

38 1.27 AC.

39 1.23 AC.

40 1.26 AC.

41 0.99 AC.

42 1.13 AC.

43 3.12 AC.

44 2.56 AC.

45 3.78 AC.

46 25 1.12 AC.

47 24 0.89 AC.

48 23 0.89 AC.

49 22 0.89 AC.

50 21 0.89 AC.

51 20 0.9 AC.

52 19 0.93 AC.

53 18 0.92 AC.

54 16 0.97 AC.

55 17 0.83 AC.

56 15 0.93 AC.

57 14 0.94 AC.

58 13 0.94 AC.

59 12 0.95 AC.

60 11 1.56 AC.

61 10 2.11 AC.

62 9 1.9 AC.

63 8 2.01 AC.

64 7 2.02 AC.

65 6 1.95 AC.

66 5 7.37 AC.

67 4 1.79 AC.

68 3 1.65 AC.

69 2 1.37 AC.

70 1 1.14 AC.

71 1 2.28 AC.

72 1 0.92 AC.

73 2 0.92 AC.

74 3 0.92 AC.

75 4 0.92 AC.

76 5 0.92 AC.

77 6 0.92 AC.

78 7 0.92 AC.

79 8 0.92 AC.

80 9 0.92 AC.

81 10 0.93 AC.

82 11 0.92 AC.

83 12 0.92 AC.

84 13 0.92 AC.

85 14 0.92 AC.

86 15 0.92 AC.

87 C-1 2.57 AC.

88 C-2 2.6 AC.

89 0.9 AC.

90 4.61 AC.

91 1A 2.44 AC.

92 3A 2.65 AC.

93 1 1.29 AC.

94 2 1.35 AC.

95 3 2.49 AC.

96 4 1.34 AC.

97 1 1.27 AC.

98 D1 1.84 AC.

99 D2 1.00 AC.

100 1 2.62 AC.