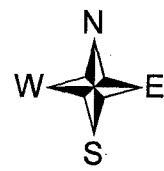
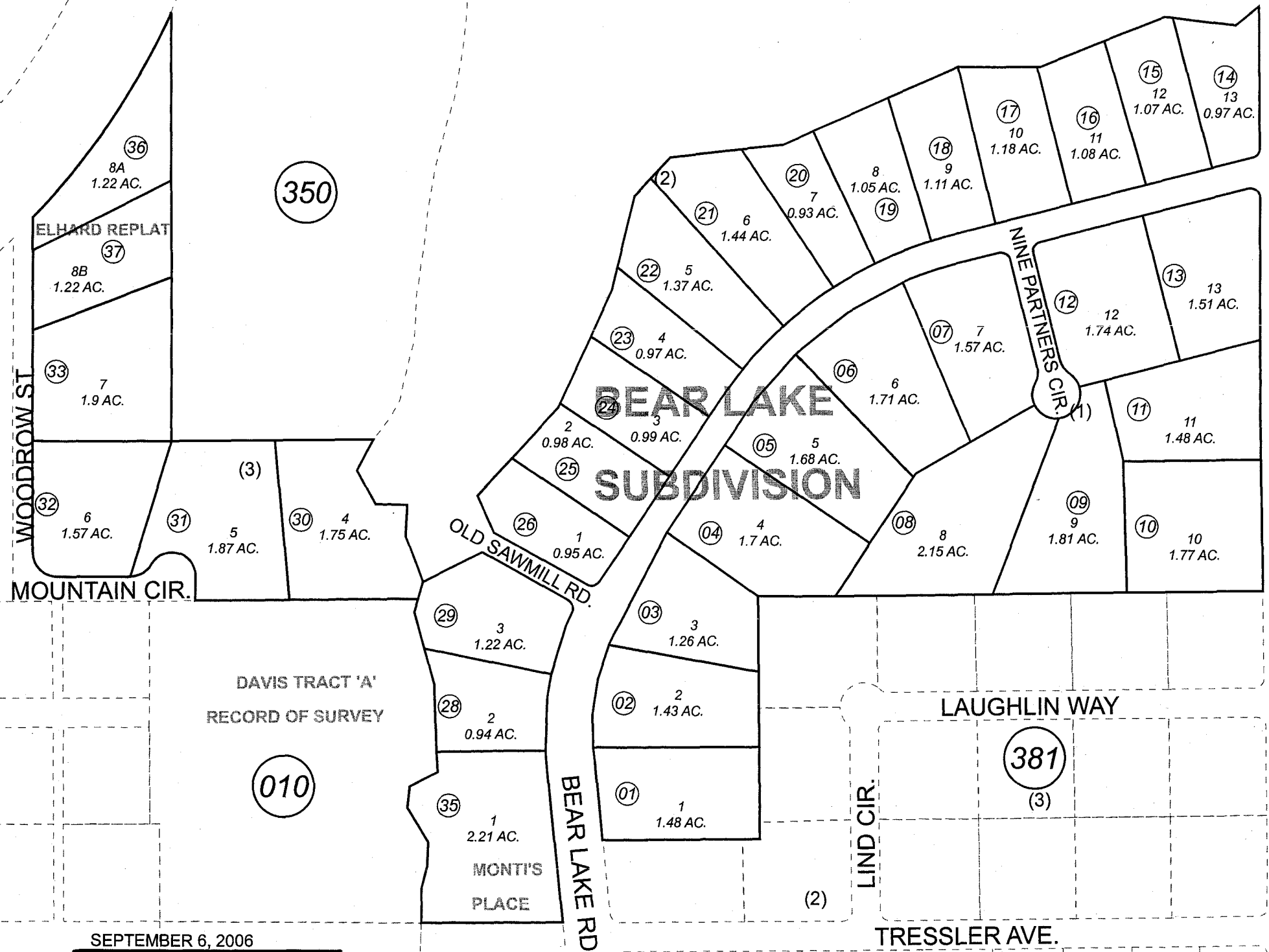


POR. SE1/4 SEC. 12, T01N, R01W, S.M.

125-380

3 2
10 11



SEPTEMBER 6, 2006

| For 2007 assessment roll | | |
|--------------------------|-------|--------|
| Delete | Add | Revise |
| To | | |
| 34 | 36,37 | |

Assessor's Map
Kenai Peninsula Borough

BEAR LAKE SUB SW0750002
MONT'S PLACE SUB SW0980022
BEAR LAKE SUB ELHARD REPLAT SW2006003

This map is prepared for Kenai Peninsula Borough Assessing Dept. use only and is not intended for conveyance nor is it a survey.
Note- Assessor's block Numbers Shown in Ellipses
Assessor's Parcel Numbers Shown in Circles