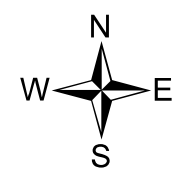
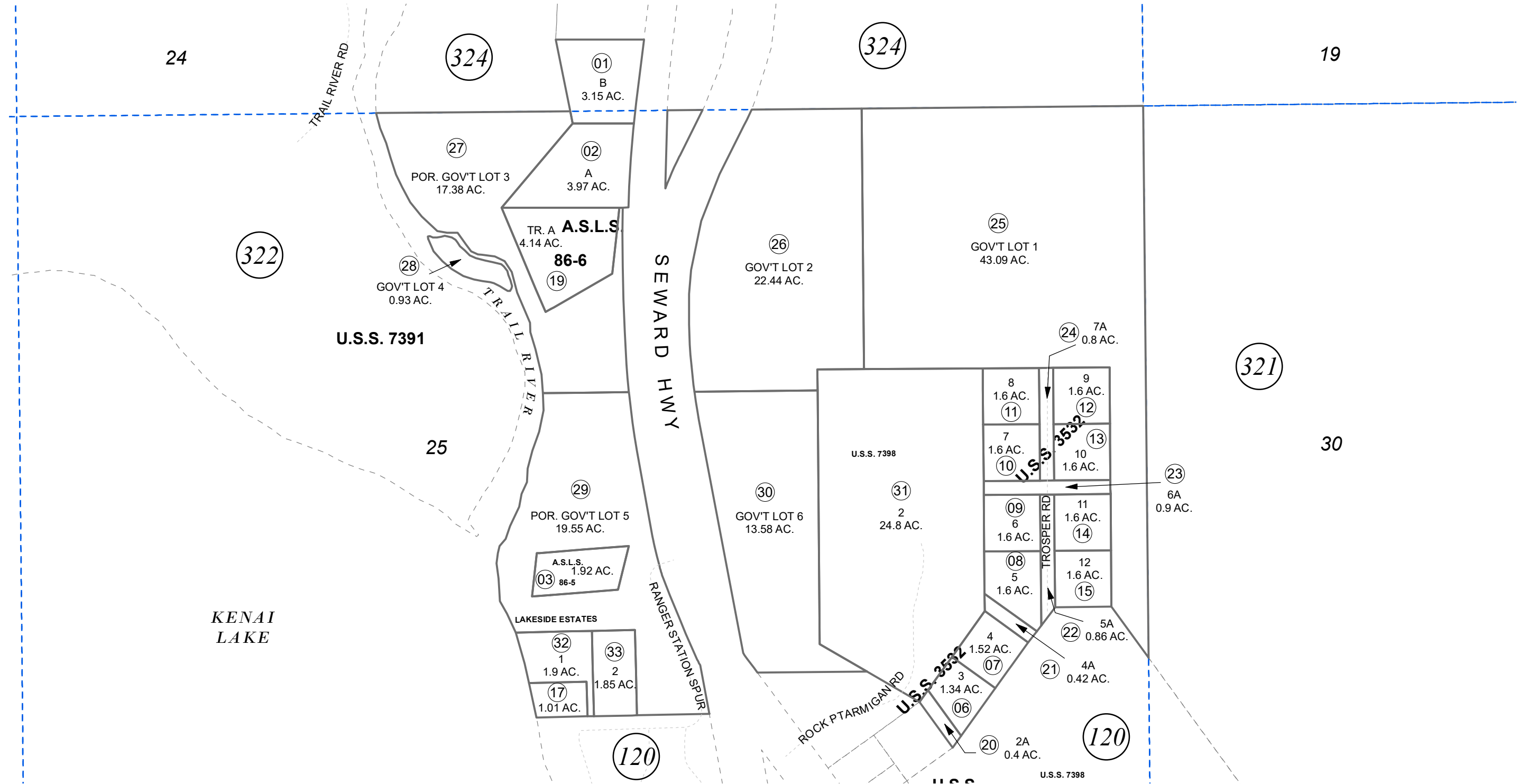


POR. SEC. 25, T04N, R01W, S.M.

125-130



0 100 200 400 Feet

JANUARY 23, 2022

For 2022 assessment roll		
Delete	Add	Revise
To		28
		(REVISE ACREAGE)

Assessor's Map
Kenai Peninsula Borough

FALLS CREEK GROUP US SURVEY 2520
ASLS 86-5 SW0870027
LAWING EXTENSION US SURVEY 3532
ASLS 86-6 SW0910009
LAKESIDE ESTATES SW0950025

This map is prepared for Kenai Peninsula Borough Assessing Dept. use only and is not intended for conveyance nor is it a survey.

Note- Assessor's block Numbers Shown in Ellipses
Assessor's Parcel Numbers Shown in Circles