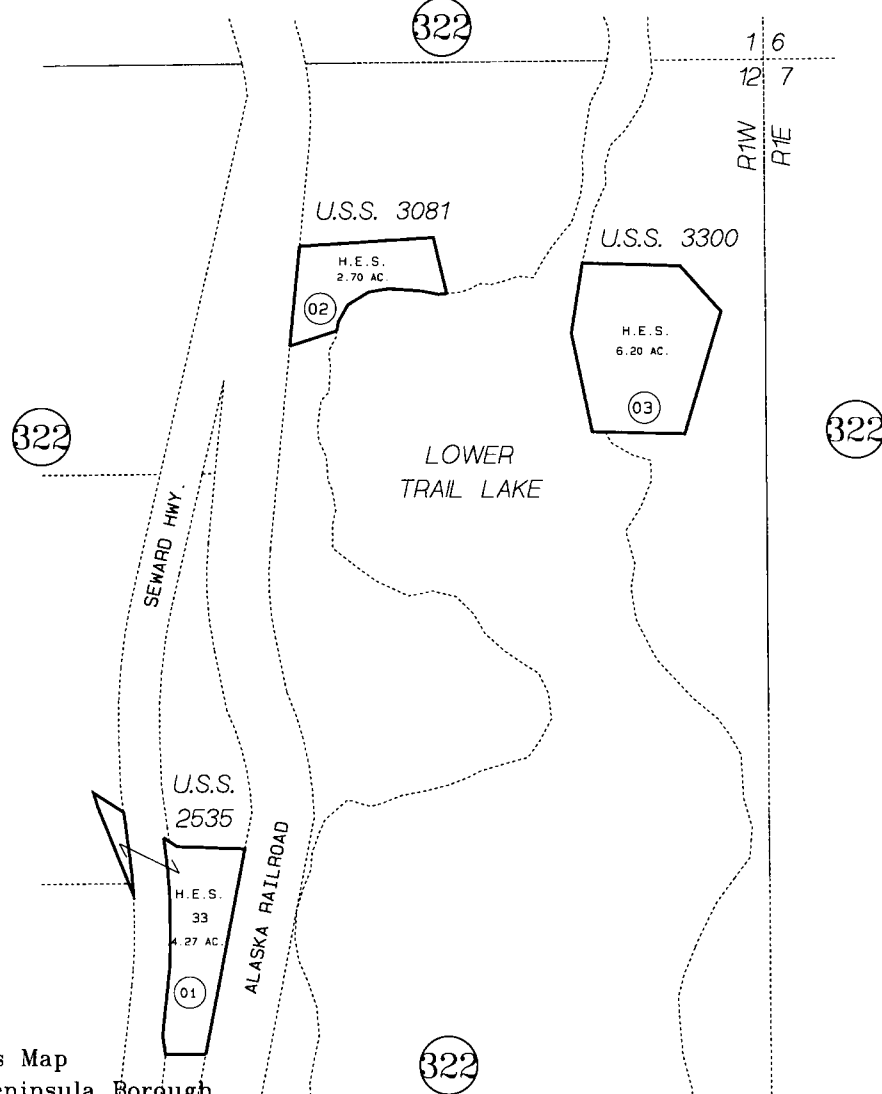


SW002535 US SURVEY 2535  
SW003081 US SURVEY 3081  
SW003300 US SURVEY 3300

POR. SEC. 12, T4N, R1W, SEWARD MERIDIAN

125-170



DATE: SEPT. 18, 1998  
FOR 1999 ASSESSMENT ROLL  
DELETE ADD REVISED  
TO  
REPLACEMENT PAGE

Assessor's Map  
Kenai Peninsula Borough

THIS MAP IS PREPARED FOR KENAI PENINSULA BOROUGH ASSESSING DEPT. USE ONLY AND IS NOT INTENDED FOR ANY OTHER USE OR REPRESENTATION  
NOTE - Assessor's Block Numbers Shown in Ellipses  
Assessor's Parcel Numbers Shown in Circles