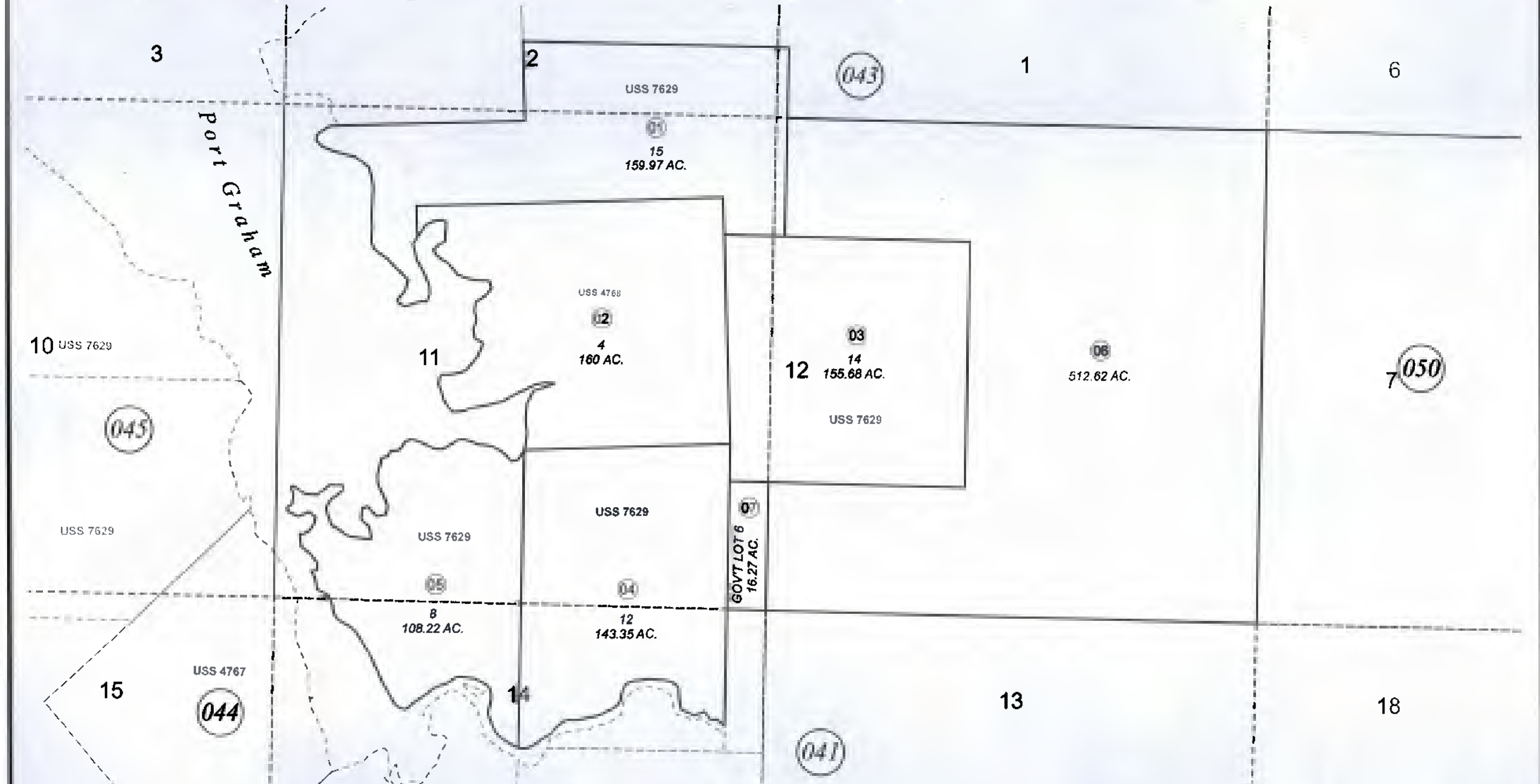


SEC. 11 & 12, AND POR. SEC. 1, 2 & 14, T10S, R15W, S.M.

191-042



SEPTEMBER 26, 2012



For 2013 assessment roll		
Delete	Add	Revise
	To	06,07
	(ACREAGE CHANGE)	

Assessor's Map
Kenai Peninsula Borough

US SURVEY 4768 SL0004768
US SURVEY 7629 SL0007629

This map is prepared for Kenai Peninsula Borough Assessing Dept. use only and is not intended for conveyance nor is it a survey.
Note- Assessor's block Numbers Shown in Elipses
Assessor's Parcel Numbers Shown in Circias