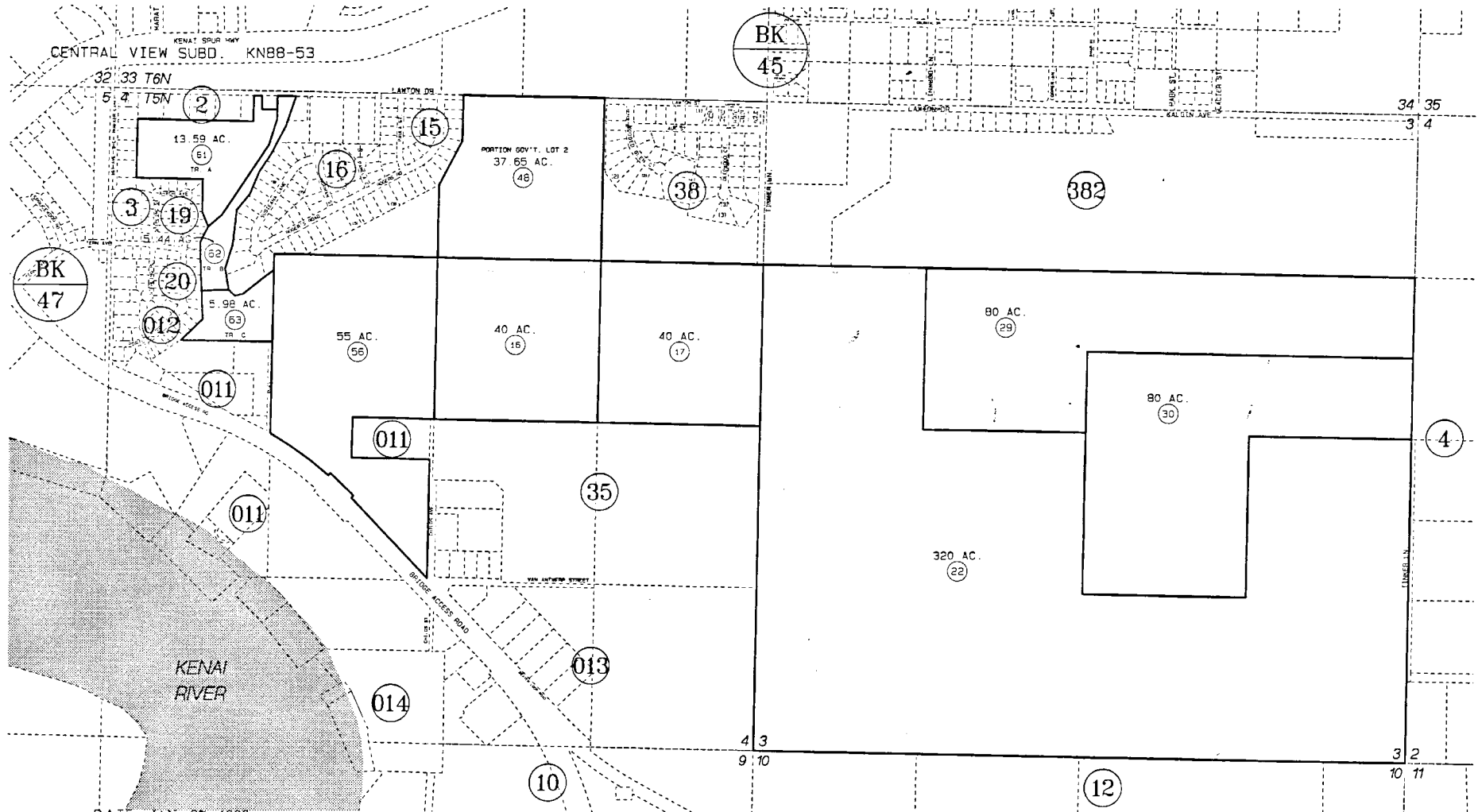


SEC. 3,4, T5N, R11W, SEWARD MERIDIAN

049-010



DATE: JAN. 27, 1998

FOR 1998 ASSESSMENT ROLL		
DELETE	ADD	REVISED
TO		
51.04-67	049382+	

Assessor's Map
Kenai Peninsula Borough

CENTRAL VIEW KN880053

THIS MAP IS PREPARED FOR KENAI PENINSULA BOROUGH ASSESSING DEPT. USE ONLY AND IS NOT INTENDED FOR ANY OTHER USE OR REPRESENTATION

NOTE - Assessor's Block Numbers Shown In Ellipses
Assessor's Parcel Numbers Shown In Circles

