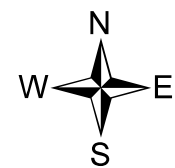
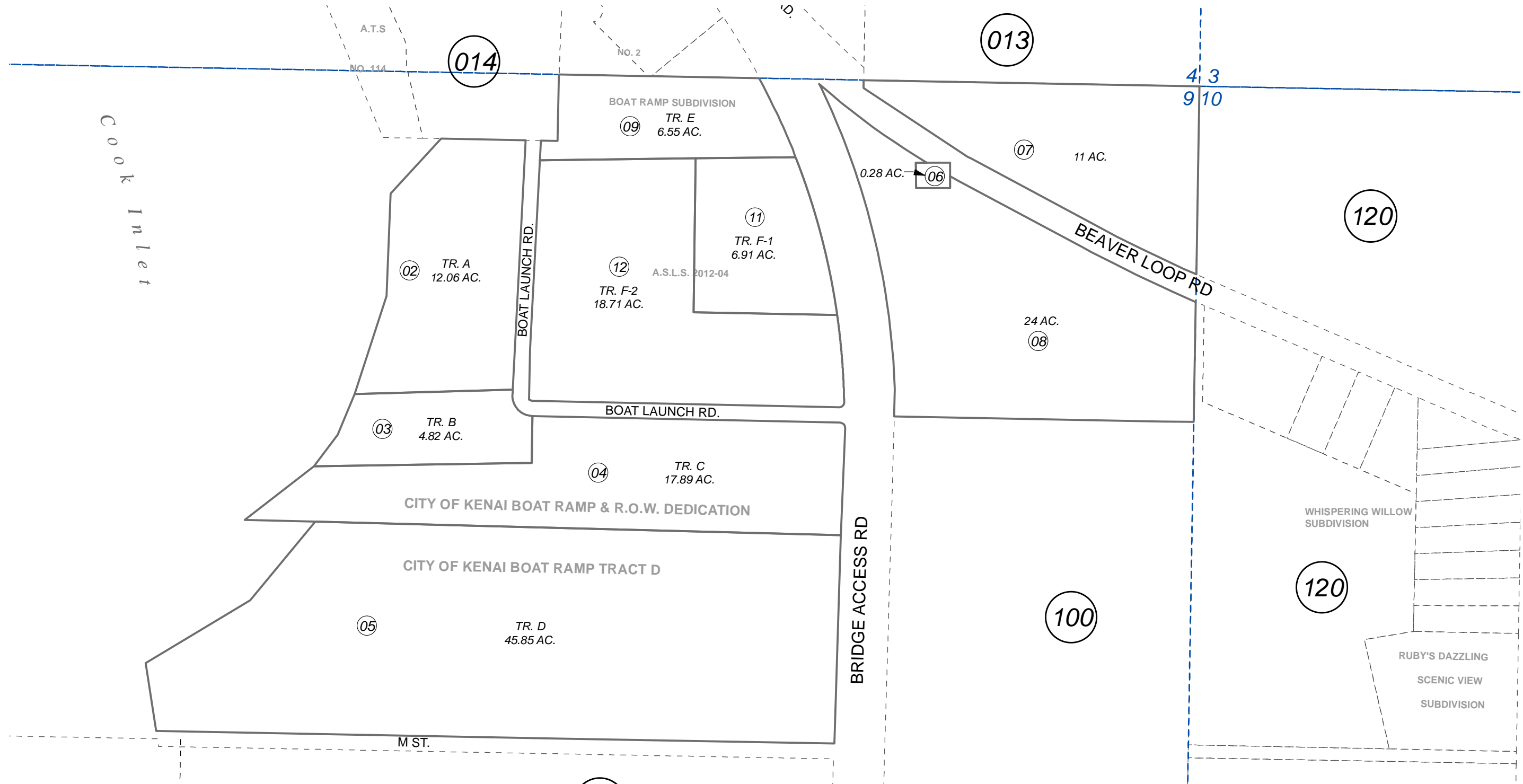


POR. N1/2 SEC. 9, T05N, R11W, S.M.

049-450



0 200 400 Feet

JULY 16, 2014

For 2015 assessment roll		
Delete	Add	Revise
To		
10	11,12	

Assessor's Map
Kenai Peninsula Borough

US SURVEY 679 KN0000679
 CITY OF KENAI BOAT RAMP & ROW DEDICATION KN0790009
 CITY OF KENAI BOAT RAMP KN0800050
 BOAT RAMP SUB KN2005122
 ASLS NO. 2012-04 KN2014020

This map is prepared for Kenai Peninsula Borough Assessing Dept. use only and is not intended for conveyance nor is it a survey.

Note- Assessor's block Numbers Shown in Elipses
 Assessor's Parcel Numbers Shown in Circles