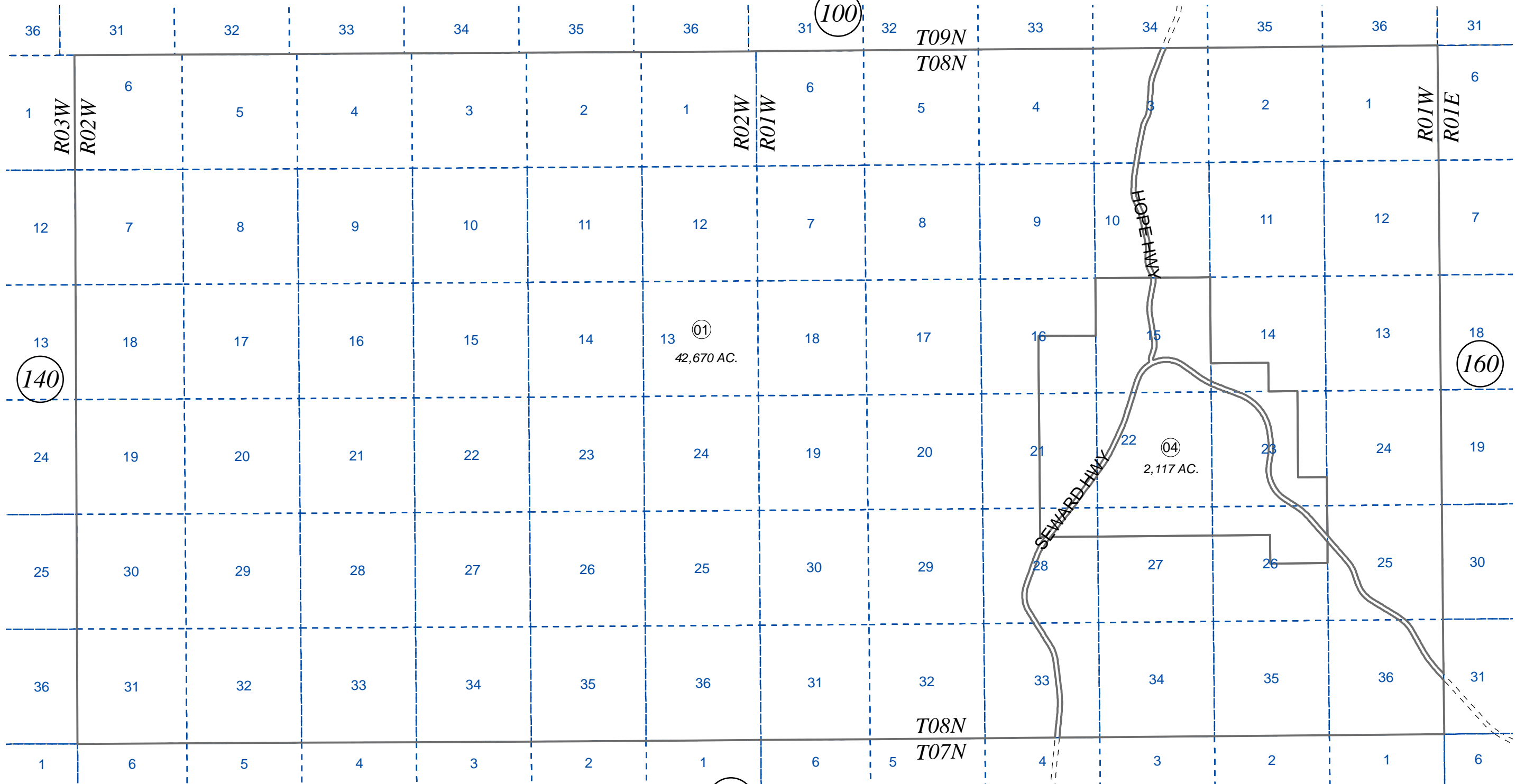
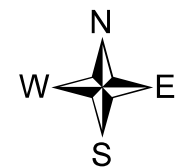


T08N, R01W, R02W, S.M.

035-150



OCTOBER 15, 2014



0 0.25 0.5 1 Miles

For 2014 assessment roll		
Delete	Add	Revise
To		
03,04		
(TO CORRECT TAX PAGE)		

Assessor's Map
Kenai Peninsula Borough

This map is prepared for Kenai Peninsula Borough Assessing Dept. use only and is not intended for conveyance nor is it a survey.

Note- Assessor's block Numbers Shown in Elipses
Assessor's Parcel Numbers Shown in Circles