

1

N 1/16
33 34

1

10 AC.
01

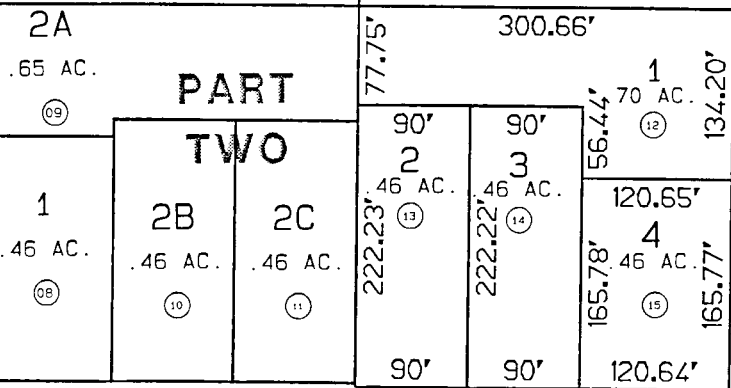
GOV'T. LOT 38
2.50 AC.
02

CHINIAK

GOV'T. LOT 37
2.50 AC.
03

CHINIAK

CHINIAK ST.



8

LINWOOD LN.

FOX AVE. NEALSAND SUBD.



DATE: AUG. 13, 1999

FOR 0000 ASSESSMENT ROLL		
DELETE	ADD	REVISED
TO		
5,6	12 - 15	

CHINIAK KN860242
 CHINIAK PART TWO KN84-71
 NEALSAND SUBD. KN890002
 Assessor's Map
 Kenai Peninsula Borough

9

THIS MAP IS PREPARED FOR KENAI PENINSULA BOROUGH ASSESSING DEPT. USE ONLY AND IS NOT INTENDED FOR CONVEYANCE NOR IS IT A SURVEY

NOTE - Assessor's Block Numbers Shown In Ellipses
 Assessor's Parcel Numbers Shown In Circles