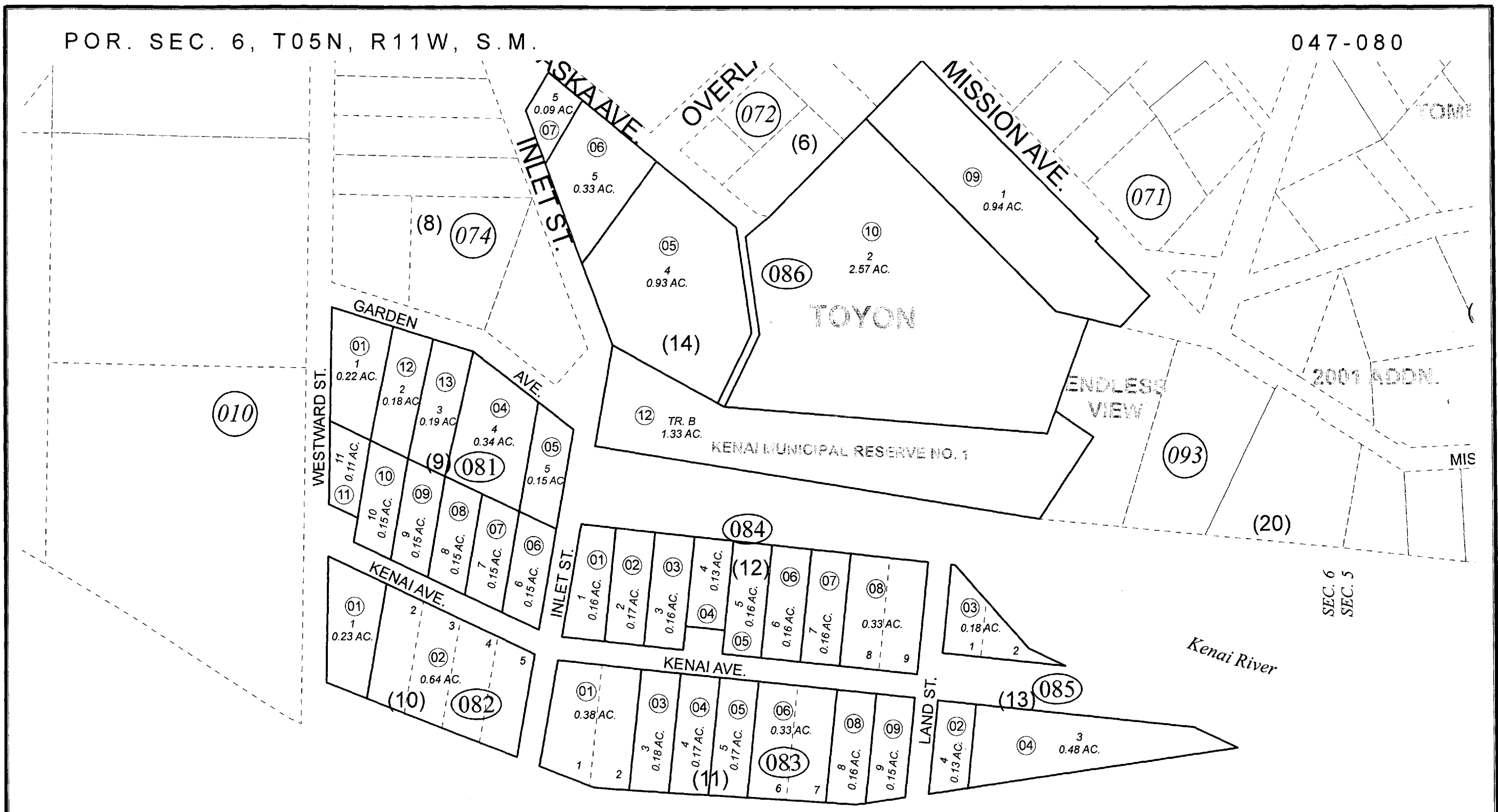


POR. SEC. 6, T05N, R11W, S.M.

047-080



010

093

(20)

SEC. 6
SEC. 5

JULY 7, 2010

For 2011 assessment roll		
Delete	Add	Revise
To		
081-02	081-12, 081-13	



Assessor's Map
Kenai Peninsula Borough

TOYON SUB KN0001592
ORIGINAL TOWNSITE OF KENAI KN0002970
KENAI MUNICIPAL RESERVE SUB NO 1 KN0850092

This map is prepared for Kenai Peninsula Borough Assessing Dept. use only and is not intended for conveyance nor is it a survey.
Note- Assessor's block Numbers Shown in Ellipses
Assessor's Parcel Numbers Shown in Circles