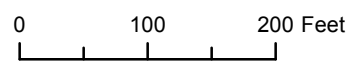
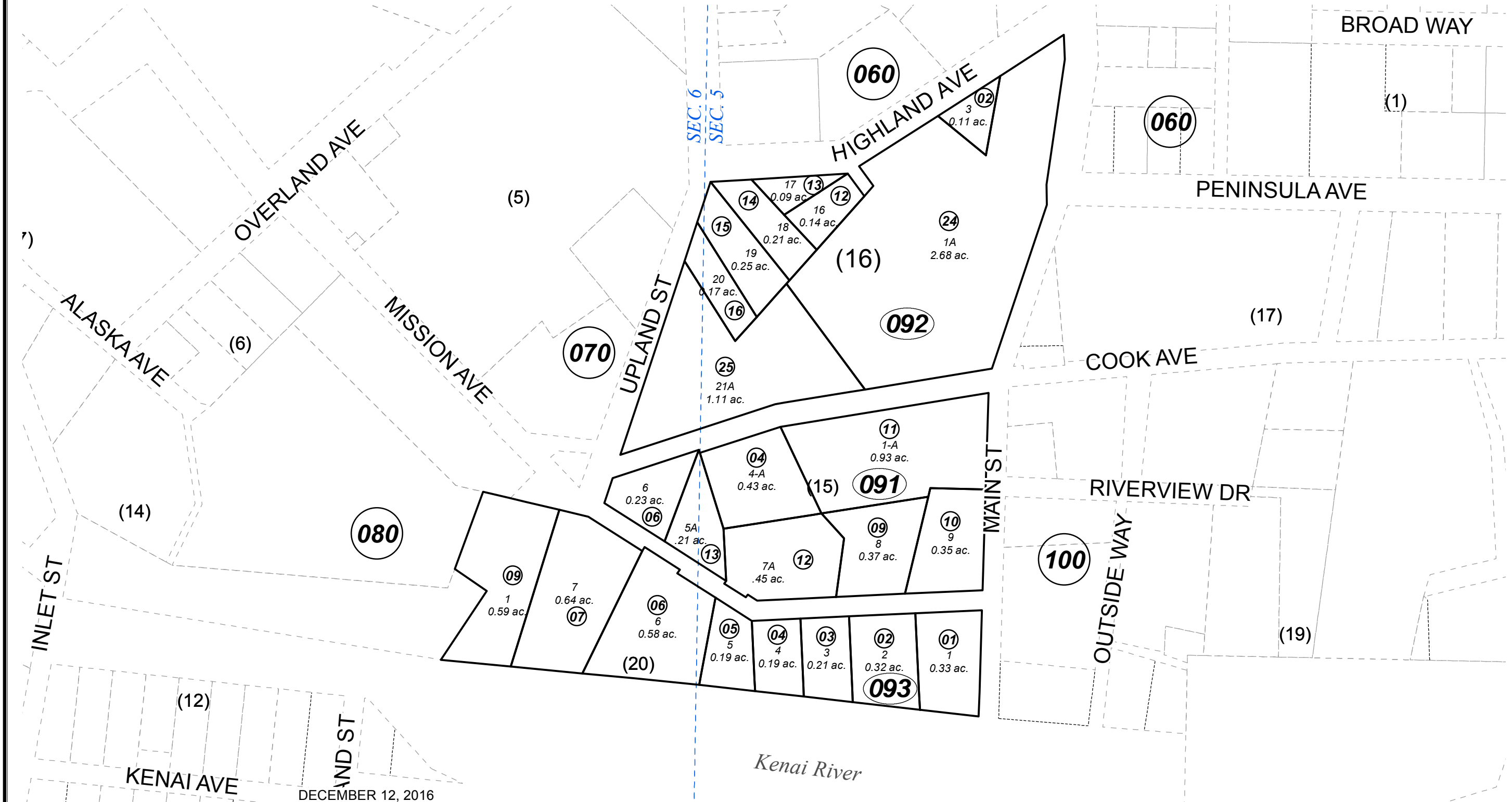


POR. SEC. 5 & 6, T05N, R11W, S.M.

047-090



DECEMBER 12, 2016

For 2017 assessment roll		
Delete	Add	Revise
	To	
09217-		
09220		
09223	09225	

Assessor's Map  
Kenai Peninsula Borough

ORIGINAL TOWNSITE OF KENAI KN0000000  
 ORIGINAL TOWNSITE OF KENAI KN0002970  
 ORIGINAL TOWNSITE OF KENAI REPLAT OF KN0770138  
 ORIGINAL TOWNSITE OF KENAI 2001 REPLAT KN2002010  
 ORIGINAL TOWNSITE OF KENAI TOMRDLE REPLAT KN2006120  
 ENDLESS VIEW SUB KN2008121  
 ORIGINAL TOWNSITE OF KENAI AMERICAN LEGION REPLAT  
 AND ROW VACATION KN2013117  
 ORIGINAL TOWNSITE OF KENAI TOMRDLE 2016 REPLAT KN2016071

Note- Assessor's block Numbers Shown in Ellipses  
 Assessor's Parcel Numbers Shown in Circles

This map is prepared  
for Kenai Peninsula  
Borough Assessing Dept.  
use only and is not  
intended for conveyance  
nor is it a survey.