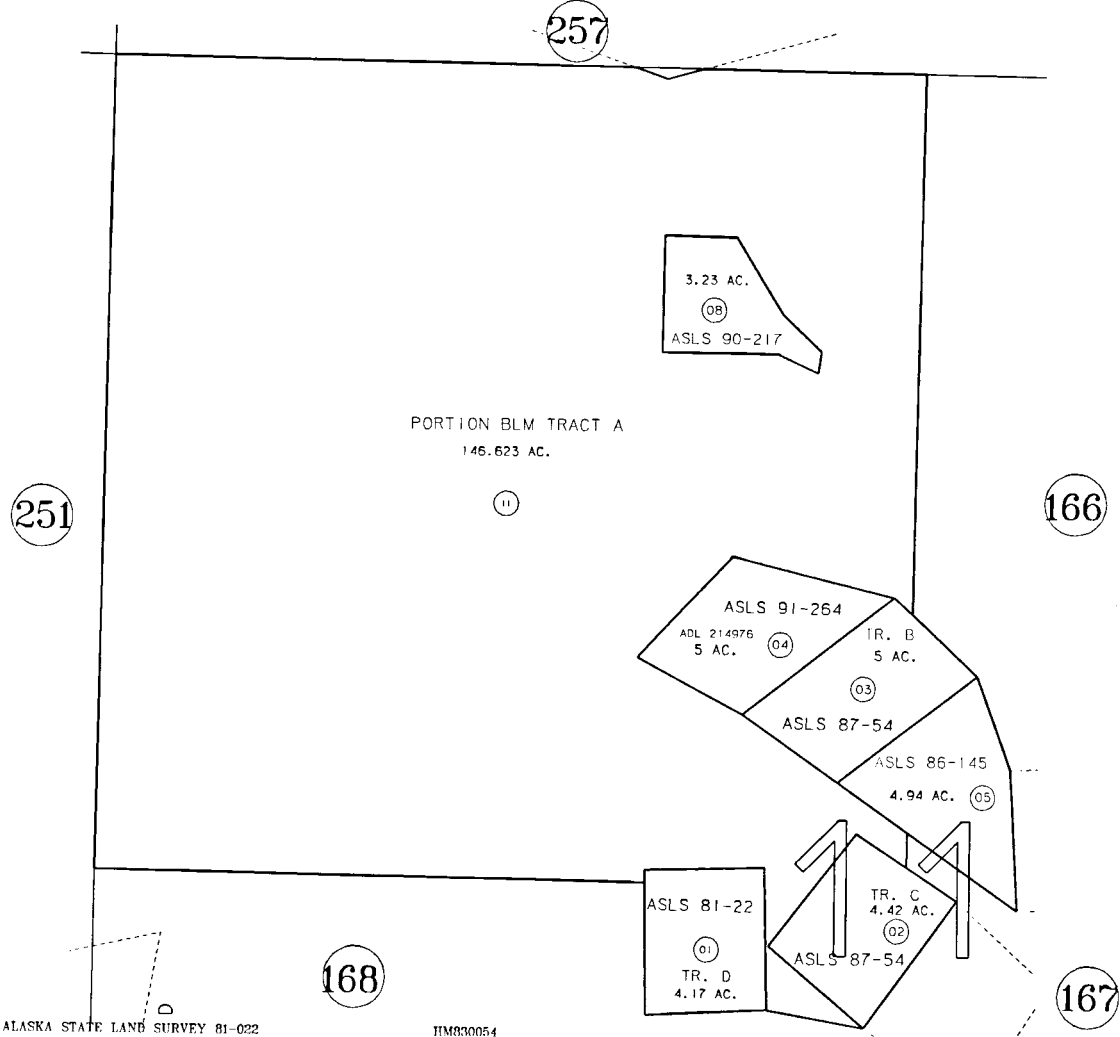


PORTION SECTION 11, T4S, R10W, SEWARD MERIDIAN

185-165



ALASKA STATE LAND SURVEY 81-022
 ALASKA STATE LAND SURVEY 86-145
 ALASKA STATE LAND SURVEY 87-054

HM830054
 HM890026
 HM880049

DATE: AUGUST 10, 1993

FOR 1994 ASSESSMENT ROLL		
DELETE	ADD	REVISED
TO		
10	11	

NOTE - Assessor's Block Numbers Shown In Ellipses Assessor's Map
 Assessor's Parcel Numbers Shown In Circles Kenai Peninsula Borough

THIS MAP IS PREPARED FOR KENAI PENINSULA BOROUGH ASSESSING DEPT. USE ONLY AND IS NOT INTENDED FOR ANY OTHER USE OR REPRESENTATION

