

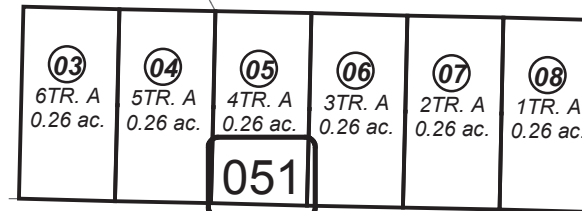
POR. SE1/4 SEC. 18, T06S, R13W, S.M.

175-050

040

DEHEL AVE.

SOUTH PENINSULA HOSPITAL SUB.
2008 ADDITION

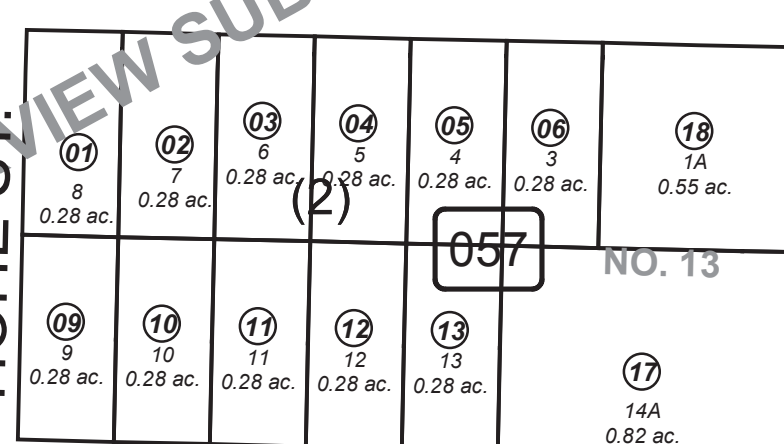
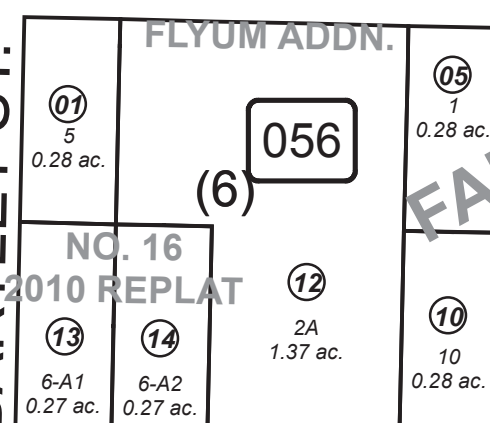
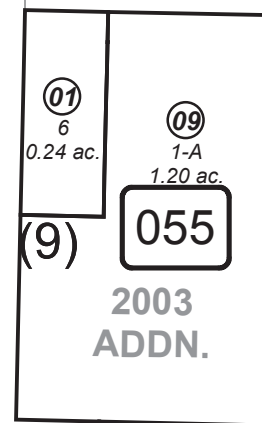
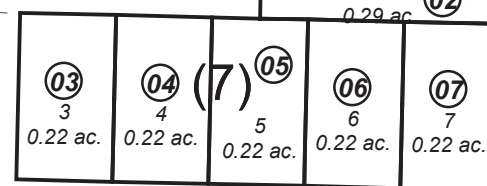
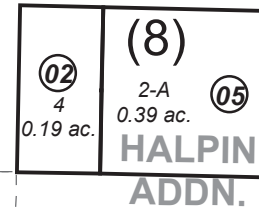
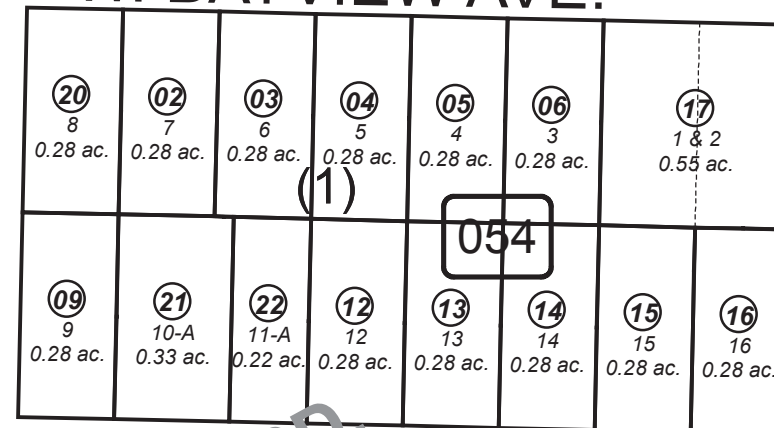


W. BAYVIEW AVE.

E. BAYVIEW AVE

052

053



MAIN ST.

BK 177

GAVIN CT.

060

W. DANVIEW AVE.

FAIRVIEW SUB HM0562936
FAIRVIEW SUB NO 8 HM0820018
FAIRVIEW SUB NO 9 HM0820022
FAIRVIEW SUB NO 10 HM0840075
FAIRVIEW RESUB NO 13 HM0960011
FAIRVIEW FIFTEEN HM2000011
FAIRVIEW SUB 2002 ADDN HM2002074
FAIRVIEW SUB 2003 ADDN HM2004101
FAIRVIEW SUB FLYUM ADDN HM2005061
FAIRVIEW SUB NEHUS ADDN HM2008096
FAIRVIEW SUB HALPIN ADDN HM2009043
FAIRVIEW SUB NO 16 2010 REPLAT HM2010027
RECORD OF SURVEY HM2015009



0 50 100 200 Feet

JUNE 4, 2018

For 2019 assessment roll		
Delete	Add	Revise
To		
05109	175040+	

Assessor's Map
Kenai Peninsula Borough

This map is prepared for Kenai Peninsula Borough Assessing Dept. use only and is not intended for conveyance nor is it a survey.
Note- Assessor's block Numbers Shown in Ellipses
Assessor's Parcel Numbers Shown in Circles