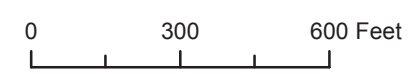
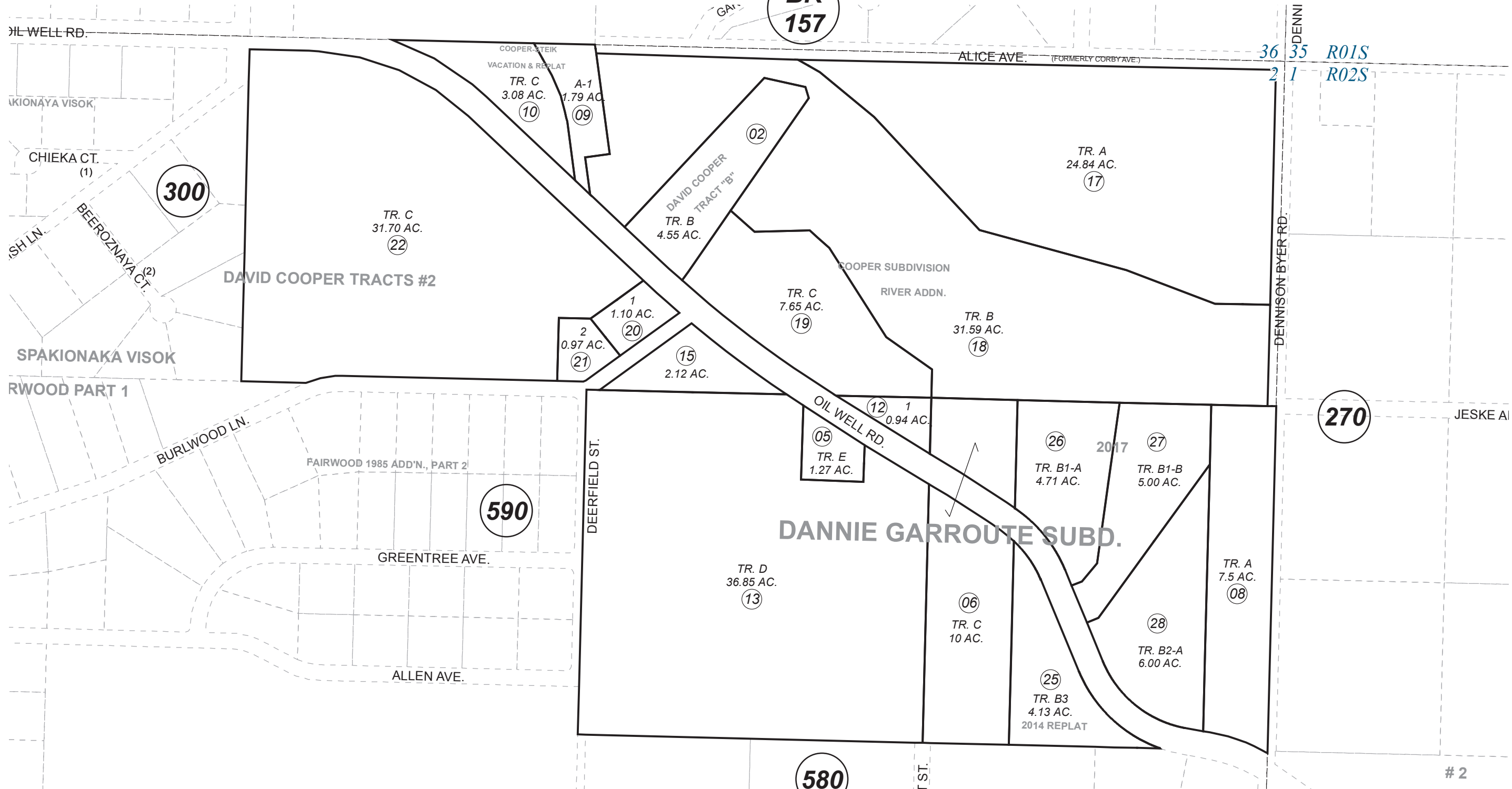


POR. SEC. 2, T02S, R14W, S.M.

159-301

BK  
157



JUNE 5, 2018

For 2019 assessment roll		
Delete	Add	Revise
	To	
23,24	26-28	

Assessor's Map  
Kenai Peninsula Borough

- DANNIE GARROUETTE SUB HM0711135
- DAVID COOPER TRACT B HM0830126
- DANNIE GARROUETTE 1984 SUB OF TRACT D HM0850059
- COOPER-STEIK VACATION & REPLAT HM0850087
- COOPER SUB RIVER ADDN HM0970042
- DAVID COOPER TRACTS #2 HM2003073
- DANNIE GARROUETTE 2014 REPLAT HM2014019
- DANNIE GARROUETTE 2017 HM2018011

Note- Assessor's block Numbers Shown in Ellipses  
Assessor's Parcel Numbers Shown in Circles

This map is prepared for Kenai Peninsula Borough Assessing Dept. use only and is not intended for conveyance nor is it a survey.