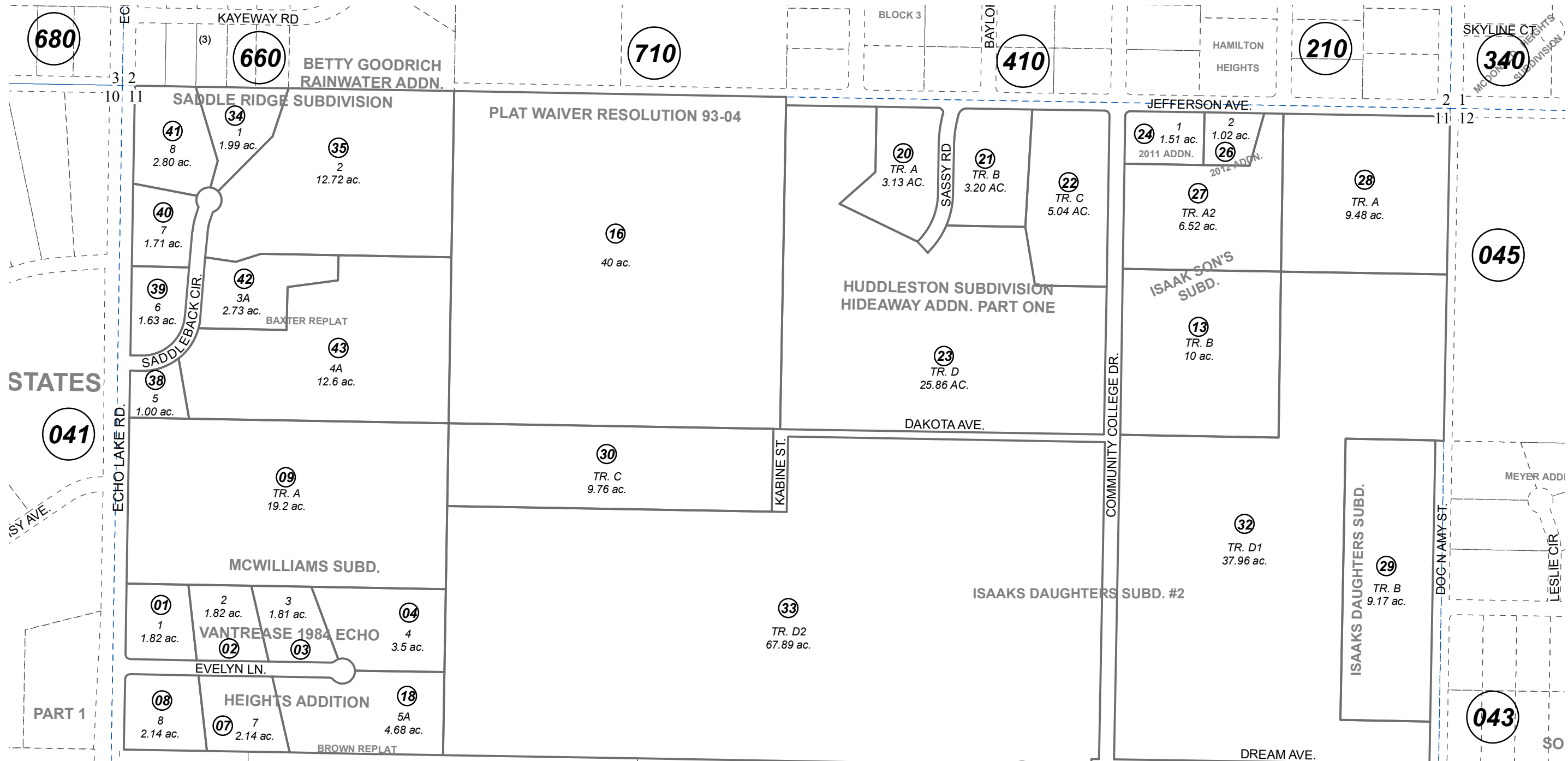


N1/2 SEC. 11, T04N, R11W, S.M.

131-044



STATES

PART 1

670

A & 2B



0 200 400 Feet

JANUARY 7, 2021

For 2021 assessment roll		
Delete	Add	Revise
To		
36,37	42,43	

Assessor's Map
Kenai Peninsula Borough

- MCWILLIAMS SUB KN0001570
- MCWILLIAMS SUB TRACT B VANTREASE 1984 ECHO HEIGHTS ADDN KN0840257
- ISAAK SONS SUB KN0840322
- MCWILLIAMS SUB BROWN REPLAT KN2002053
- HUDDLESTON SUB KN2004122
- HUDDLESTON SUB HIDEAWAY ADDN PART ONE KN2006080
- ISAAK SONS SUB 2011 ADDN KN2011056
- ISAAK SONS SUB 2012 ADDN KN2012038
- ISAAKS' DAUGHTERS SUB KN2013122
- ISAAKS' DAUGHTERS SUB #2 KN2015093
- SADDLE RIDGE SUB KN2017081
- SADDLE RIDGE SUB BAXTER REPLAT KN2020089

This map is prepared for Kenai Peninsula Borough Assessing Dept. use only and is not intended for conveyance nor is it a survey.

Note- Assessor's block Numbers Shown in Ellipses
Assessor's Parcel Numbers Shown in Circles