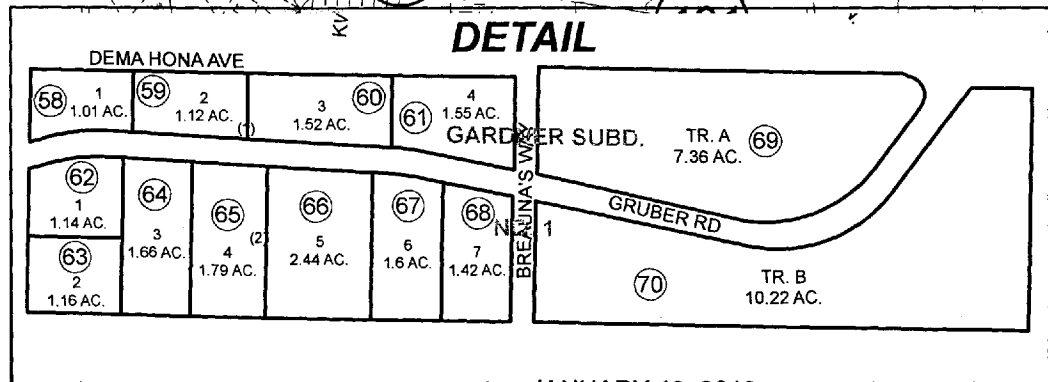
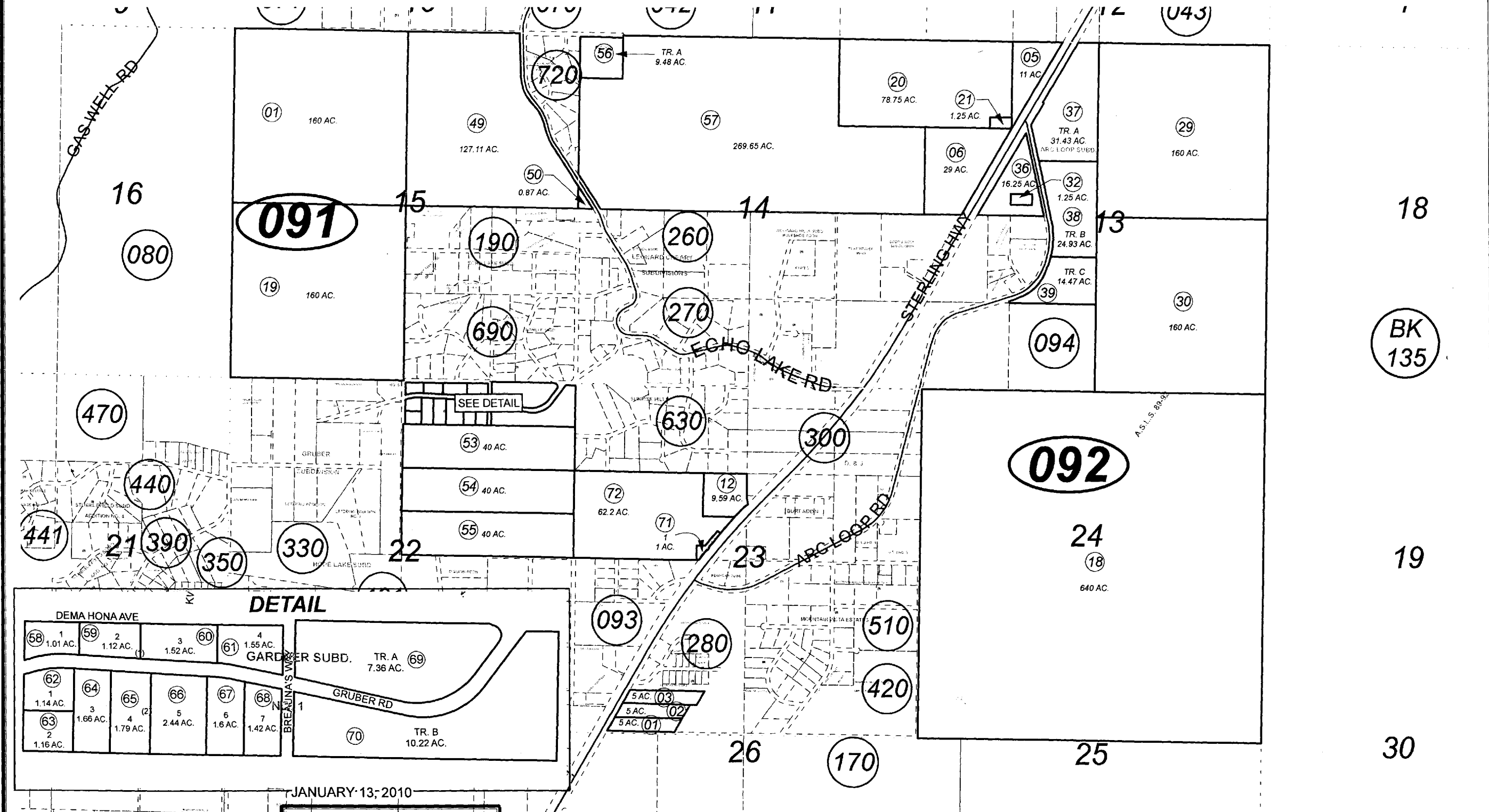


POR. SEC. 13-15 & 22-24, T04N, R11W, S.M.

131-090



JANUARY 13, 2010

For 2010 assessment roll		
Delete	Add	Revise
To		
13	71,72	



Assessor's Map
Kenai Peninsula Borough

ALASKA STATE LAND SURVEY 89-95 KN0900016
 ELK VISTA SUB KN0920019
 ARC LOOP SUB KN2007128
 GARDNER SUB NO. 1 KN2008109
 GARDNER SUB NO. 2 KN2009098

This map is prepared for Kenai Peninsula Borough Assessing Dept. use only and is not intended for conveyance nor is it a survey.
 Note- Assessor's block Numbers Shown in Ellipses
 Assessor's Parcel Numbers Shown in Circles