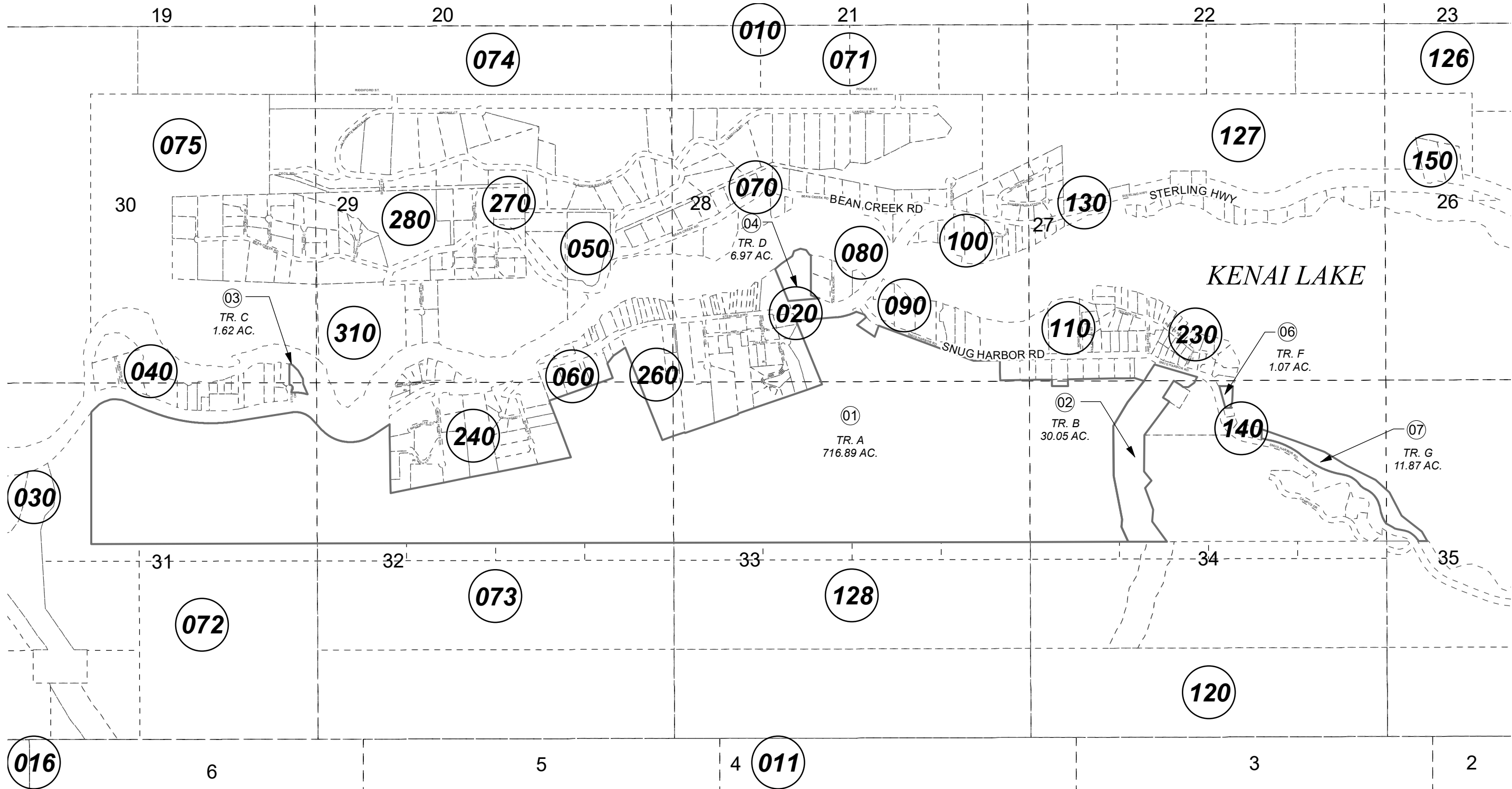


POR. SEC. 27-35, T05N, R03W, S.M.

119-119



AUGUST 9, 2021

For 2022 assessment roll		
Delete	Add	Revise
To		
05	119-090+	



0 500 1,000 2,000 Feet

Assessor's Map  
Kenai Peninsula Borough

ALASKA STATE LAND SURVEY 2003-5 SW2006021

Note- Assessor's block Numbers Shown in Elipses  
Assessor's Parcel Numbers Shown in Circles

This map is prepared  
for Kenai Peninsula  
Borough Assessing Dept.  
use only and is not  
intended for conveyance  
nor is it a survey.