

S1/2 SEC. 28 & N1/4 SEC. 33, T08S, R13W, S.M.

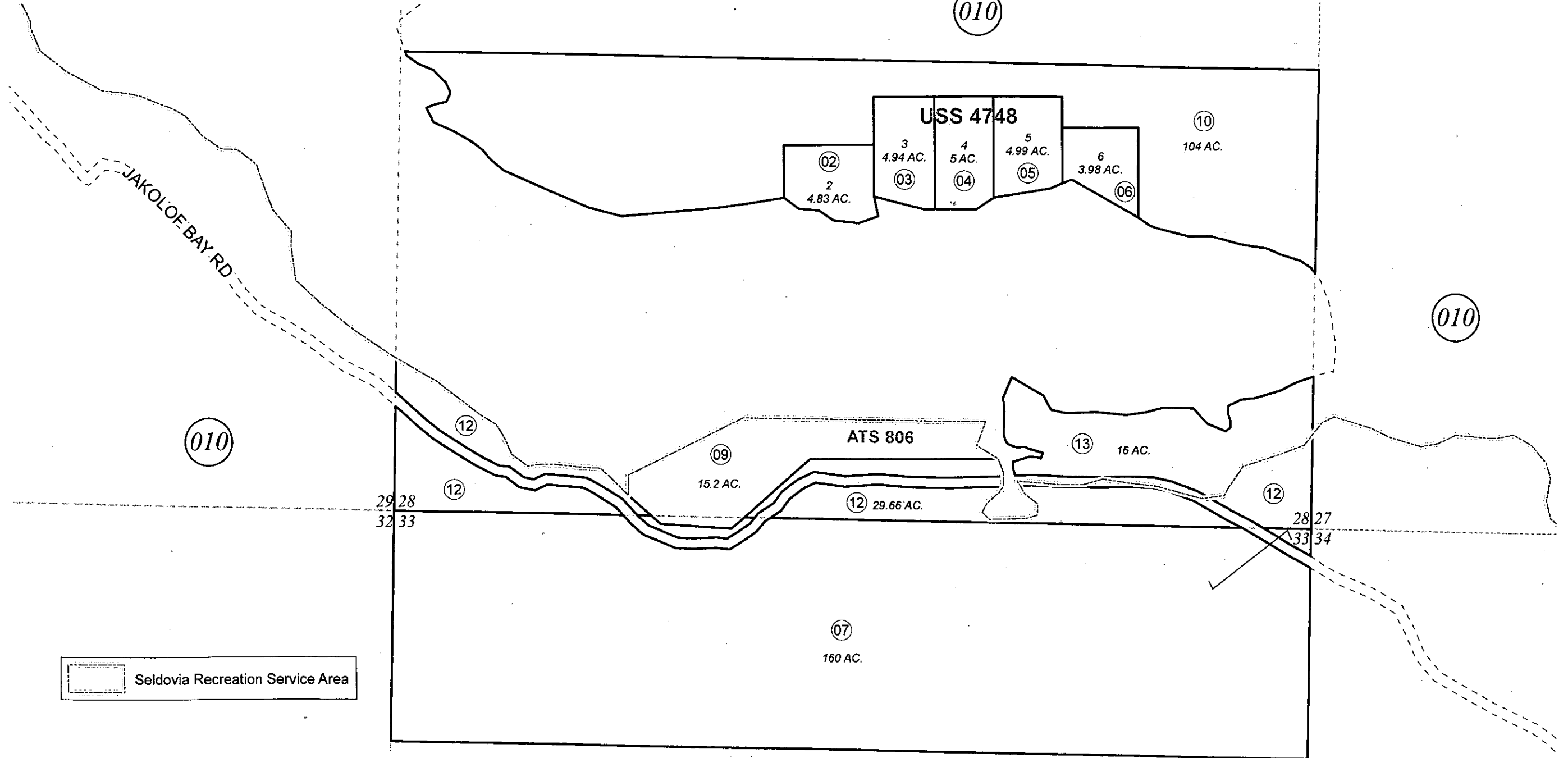
191-093

010

010

010

010



Seldovia Recreation Service Area

APRIL 24, 2012

For 2012 assessment roll		
Delete	Add	Revise
To		
08,11	12,13	



0 150 300 600 Feet

Assessor's Map
Kenai Peninsula Borough

US SURVEY 4748 SL0004748

This map is prepared for Kenai Peninsula Borough Assessing Dept. use only and is not intended for conveyance nor is it a survey.

Note- Assessor's block Numbers Shown in Elipses
Assessor's Parcel Numbers Shown in Circles