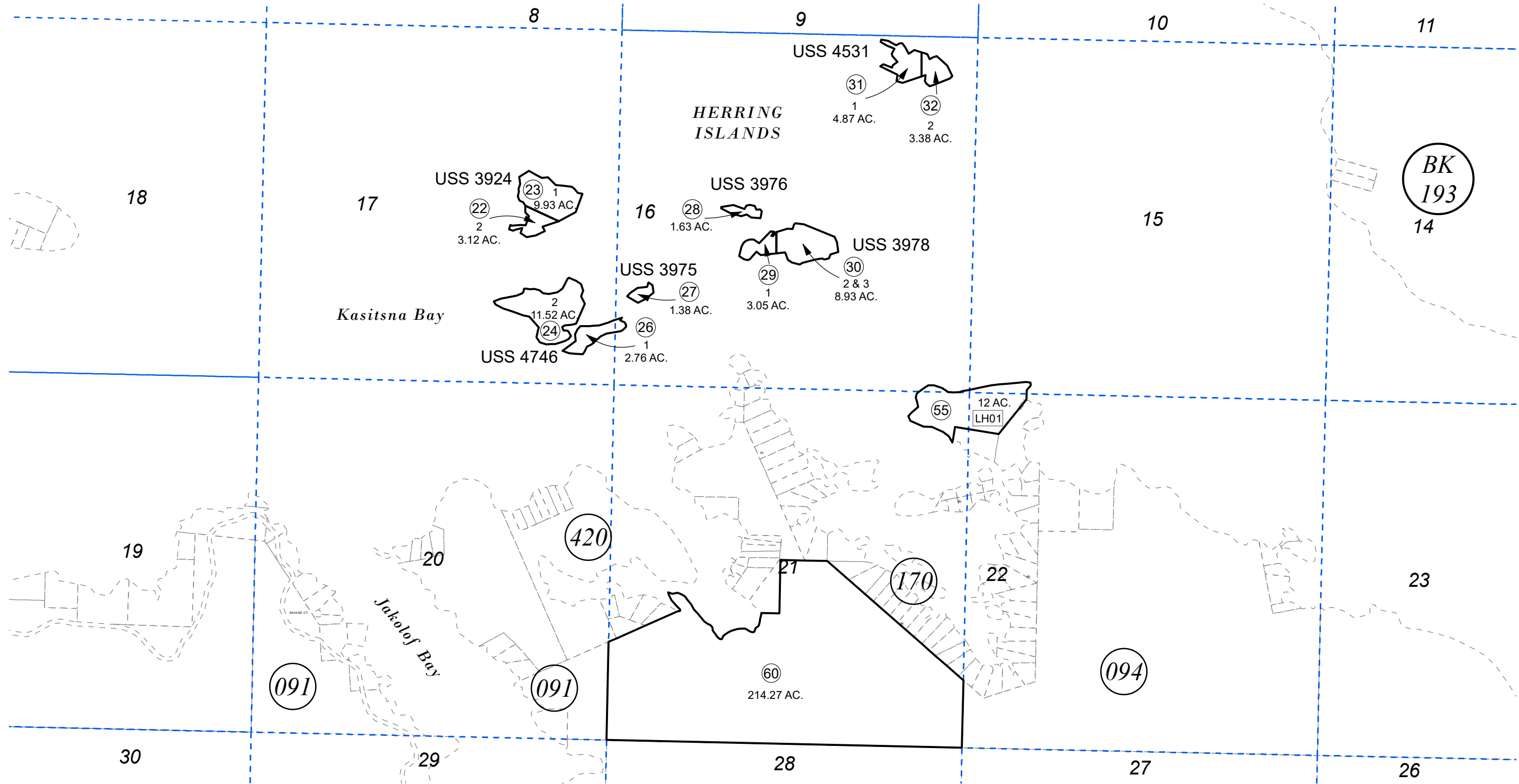


POR. SEC. 15-17, 21-22, T08S, R13W, S.M.

191-090



FEBRUARY 4, 2022

For 2022 assessment roll		
Delete	Add	Revise
	To	55
	(ADD LEASEHOLD)	

- USS 3924 SL0003924
- USS 3975 SL0003975
- USS 3976 SL0003976
- USS 3978 SL0003978
- USS 4531 SL0004531
- USS 4746 SL0004746

Assessor's Map
Kenai Peninsula Borough



0 500 1,000 Feet

This map is prepared for Kenai Peninsula Borough Assessing Dept. use only and is not intended for conveyance nor is it a survey.

Note- Assessor's block Numbers Shown in Elipses
Assessor's Parcel Numbers Shown in Circles