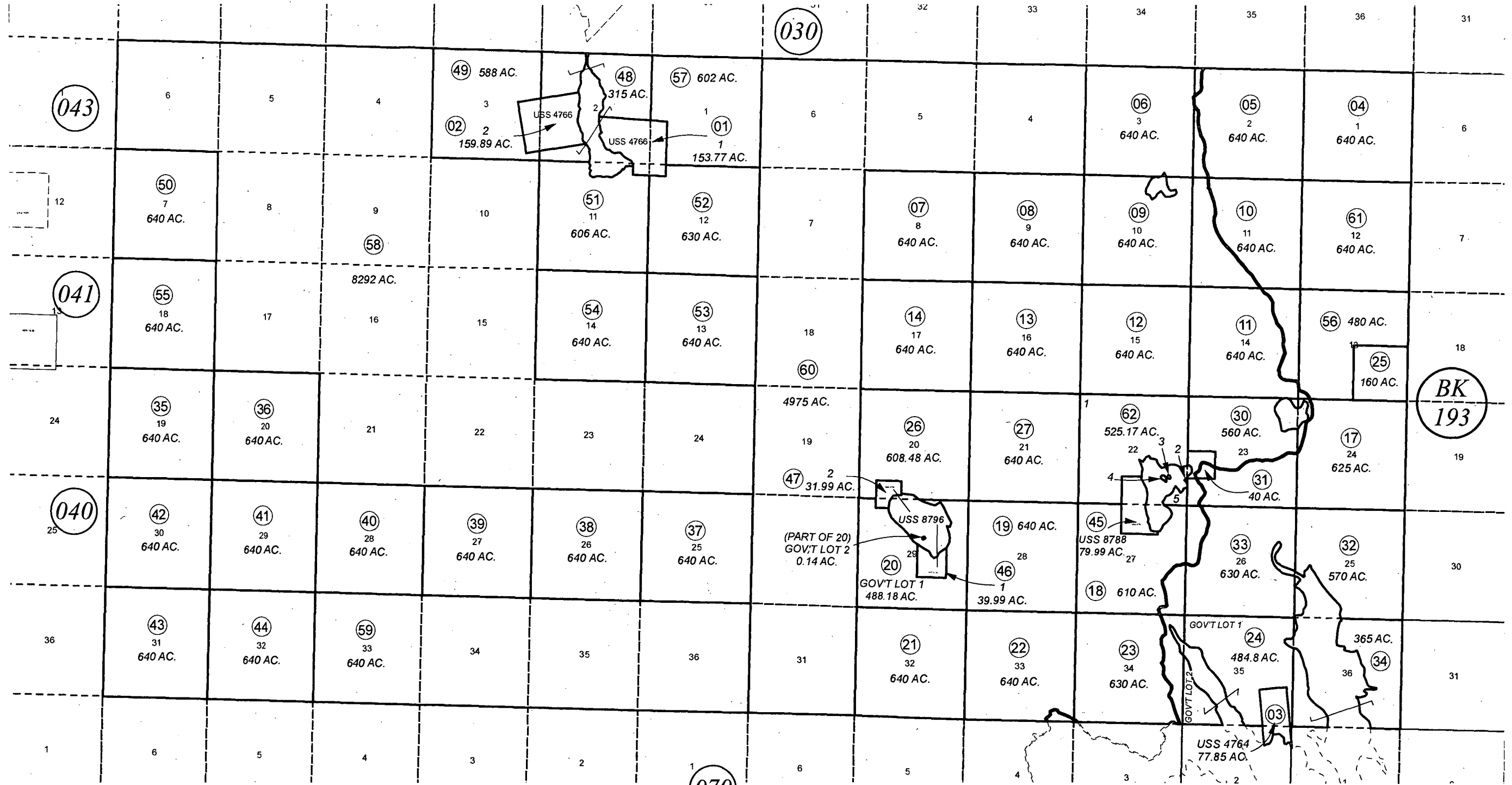


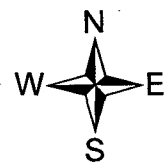
T10S, R13W, S.M.

191-050



OCTOBER 3, 2012

For 2013 assessment roll		
Delete	Add	Revise
To		
28,29	62	20,24,26
(ACREAGE CHANGE)		



Assessor's Map
Kenai Peninsula Borough

US SURVEY 4766 SL0004766
 US SURVEY 4764 SL0004764
 US SURVEY 8788 SL0008788
 US SURVEY 8796 SL0008796

This map is prepared for Kenai Peninsula Borough Assessing Dept. use only and is not intended for conveyance nor is it a survey.
 Note- Assessor's block Numbers Shown in Elipses
 Assessor's Parcel Numbers Shown in Circles