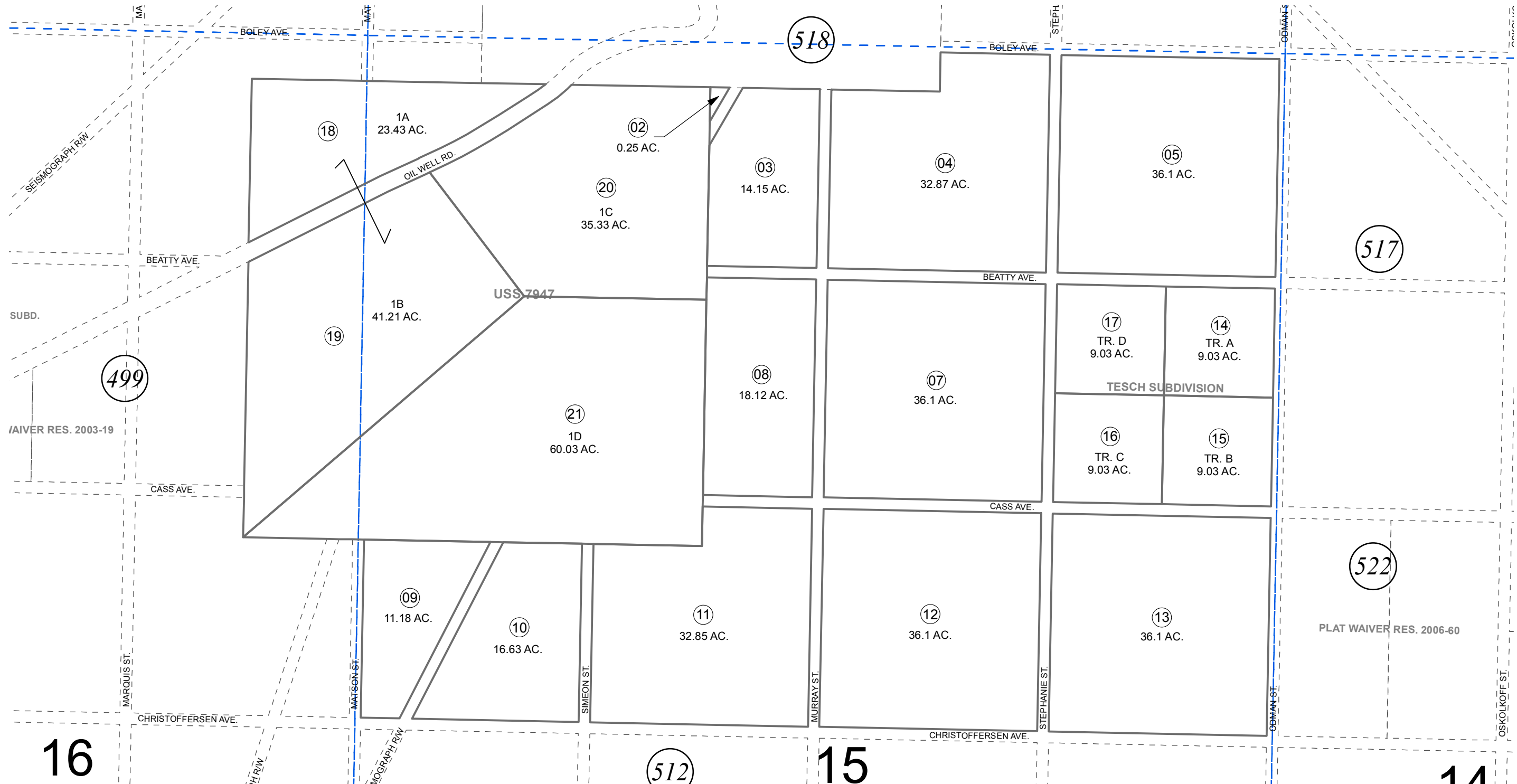


POR. E1/2 E1/2 SEC. 16 & N3/4 SEC. 15, T02S, R12W, S.M.

185-519



16

15

14

AUGUST 19, 2015

For 2016 assessment roll		
Delete	Add	Revise
01	18-21	



0 150 300 600 Feet

Assessor's Map
Kenai Peninsula Borough

US SURVEY 7947
TESCH SUB HM0960065
US SURVEY 7947, RESUB LOT 1

This map is prepared for Kenai Peninsula Borough Assessing Dept. use only and is not intended for conveyance nor is it a survey.
Note- Assessor's block Numbers Shown in Ellipses
Assessor's Parcel Numbers Shown in Circles