

For 2011 assessment roll	
Delete	Add
11	19
3-6,	8-10,
14-16	(ACREAGE CHANGE)

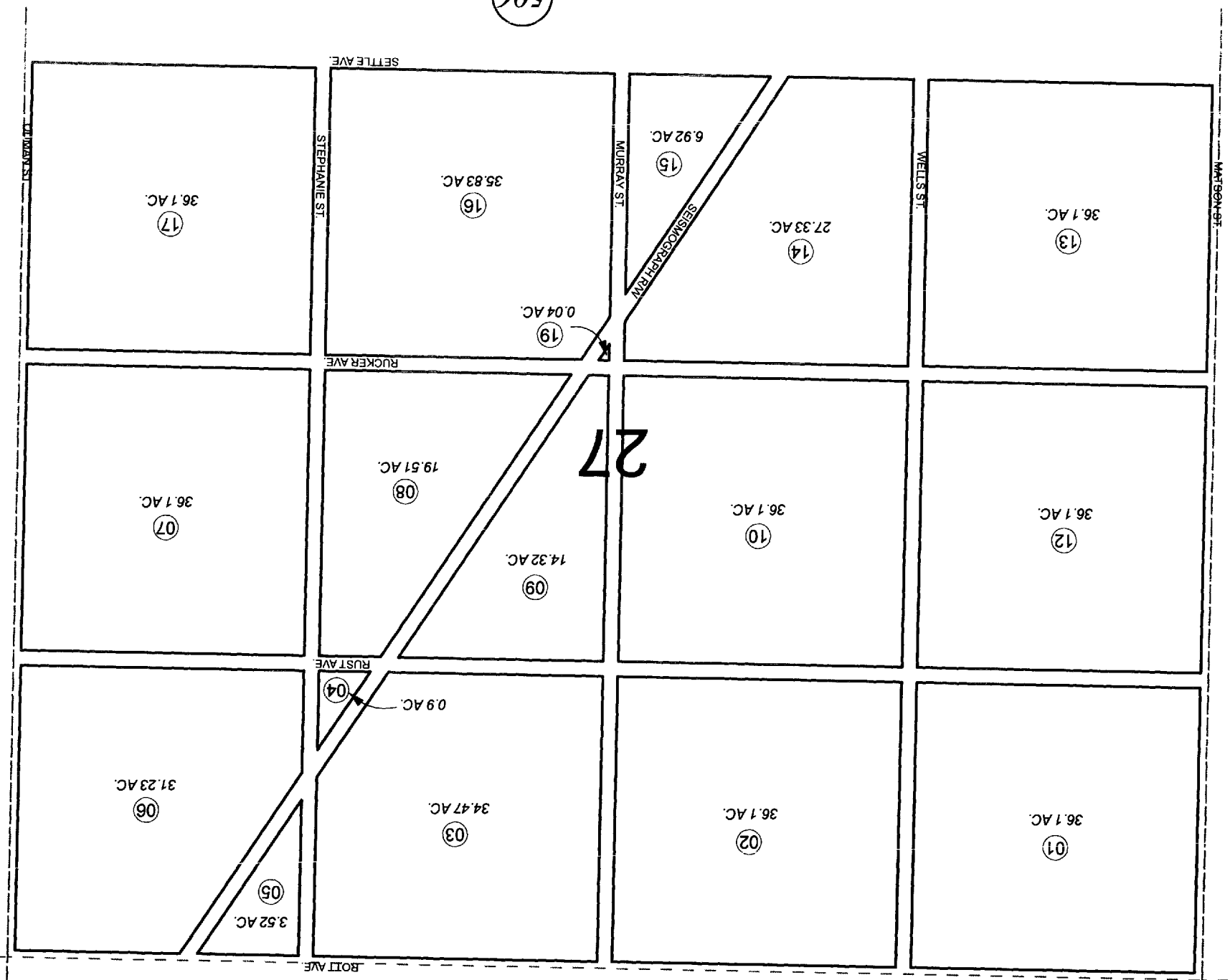
JANUARY 13, 2011

Assessor's Map
Kenai Peninsula Borough

This map is prepared for Kenai Peninsula Borough Assessing Dept. use only and is not intended for conveyance nor is it a survey. Note- Assessor's block Numbers Shown in Ellipses and Parcel Numbers Shown in Circles

N 3/4, SEC. 27, T 01 S, R 12 W, S. M.

185-501



28

500

27

26

502

500

506