

S1/2 SEC. 14, T06S, R14W, S.M.

175-010

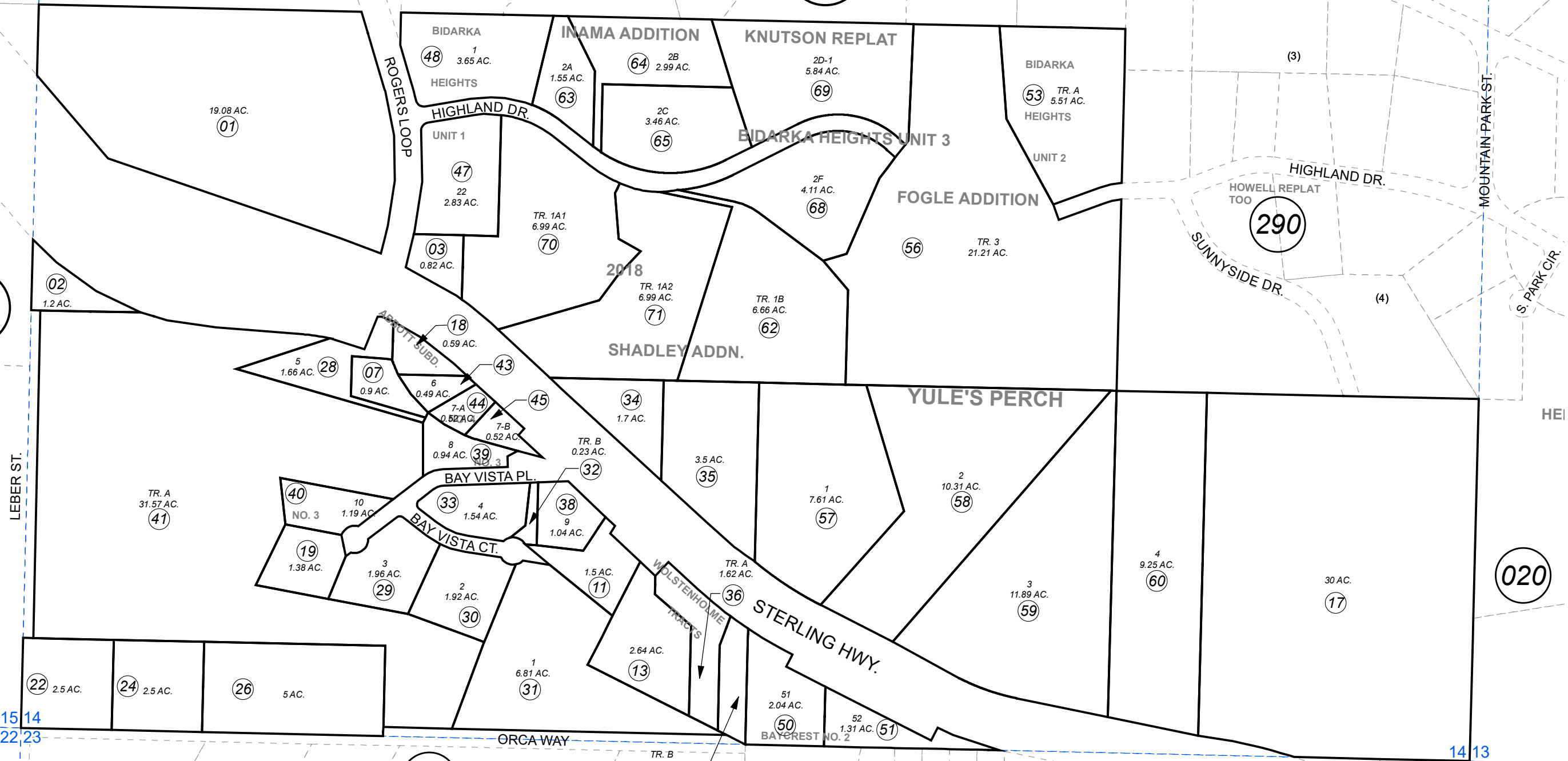
BK 173

BK 173

020

070

210



0 190 380 Feet

NOVEMBER 5, 2018

For 2019 assessment roll		
Delete	Add	Revise
To		
61	70,71	

Assessor's Map
Kenai Peninsula Borough

- ABBOTT SUB HM0770029
- WOLSTENHOLME TRACTS SUB HM0770091
- ABBOTT SUB NO 3 HM0780110
- ABBOTT SUB ADDN OF LOTS 6 & 7 HM0780120
- ABBOTT SUB NO 4 HM0790062
- BIDARKA HEIGHTS SUB UNIT 1 HM0870008
- BAYCREST SUB NO 2 HM0880022
- BIDARKA HEIGHTS SUB UNIT 2 HM0910065
- BIDARKA HEIGHTS UNIT 3 FOGLE ADDN HM0970044
- YULES PERCH HM2005011
- BIDARKA HEIGHTS SHADLEY ADDN HM2005057
- BIDARKA HEIGHTS UNIT 3 INAMA ADDN HM2008005
- BIDARKA HEIGHTS UNIT 3 FOGLE ADDN HM0970044
- YULES PERCH AMENDED HM2008034
- BIDARKA HEIGHTS UNIT 3 KNUTSON REPLAT HM2014030
- BIDARKA HEIGHTS 2018 HM2018039

This map is prepared for Kenai Peninsula Borough Assessing Dept. use only and is not intended for conveyance nor is it a survey.

Note- Assessor's block Numbers Shown in Ellipses
Assessor's Parcel Numbers Shown in Circles