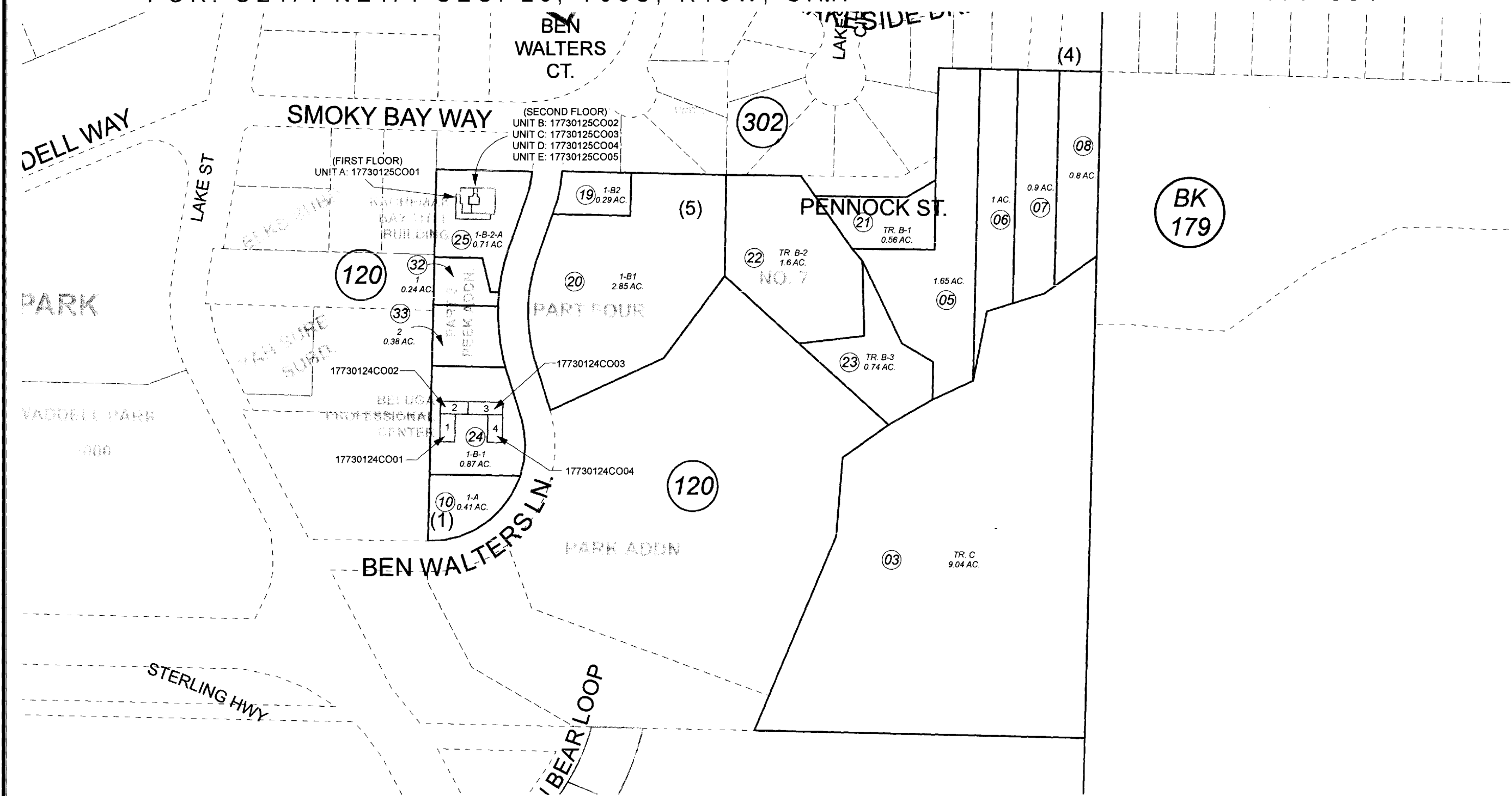


POR. SE1/4 NE1/4 SEC. 20, T06S, R13W, S.M.

177-301



AUGUST 4, 2010

For 2011 assessment roll		
Delete	Add	Revise
To		
15-18, 27-31		24, 25
(ADDED CONDOMINIUM REFERENCES)		

Assessor's Map  
Kenai Peninsula Borough

A A MATTOX 1959 ADDN □ HM0004411  
 LAKESIDE VILLAGE SUB PART 2 □ HM0790014  
 LAKESIDE VILLAGE SUB PART 3 RESUB □ HM0790105  
 LAKESIDE VILLAGE SUB PART 3 BELUGA PROFESSIONAL CENTER CONDOMINIUMS □ HM0790140  
 LAKESIDE VILLAGE SUB PART 4 □ HM0840057  
 A A MATTOX NO 7 □ HM0920042  
 LAKESIDE VILLAGE PART 3 KBT ADDN □ HM2005095  
 KACHEMAK BAY TITLE BUILDING HM2007003  
 LAKESIDE VILLAGE PART 3 PEEK ADDN HM2008047



This map is prepared for Kenai Peninsula Borough Assessing Dept. use only and is not intended for conveyance nor is it a survey.  
 Note- Assessor's block Numbers Shown in Ellipses  
 Assessor's Parcel Numbers Shown in Circles