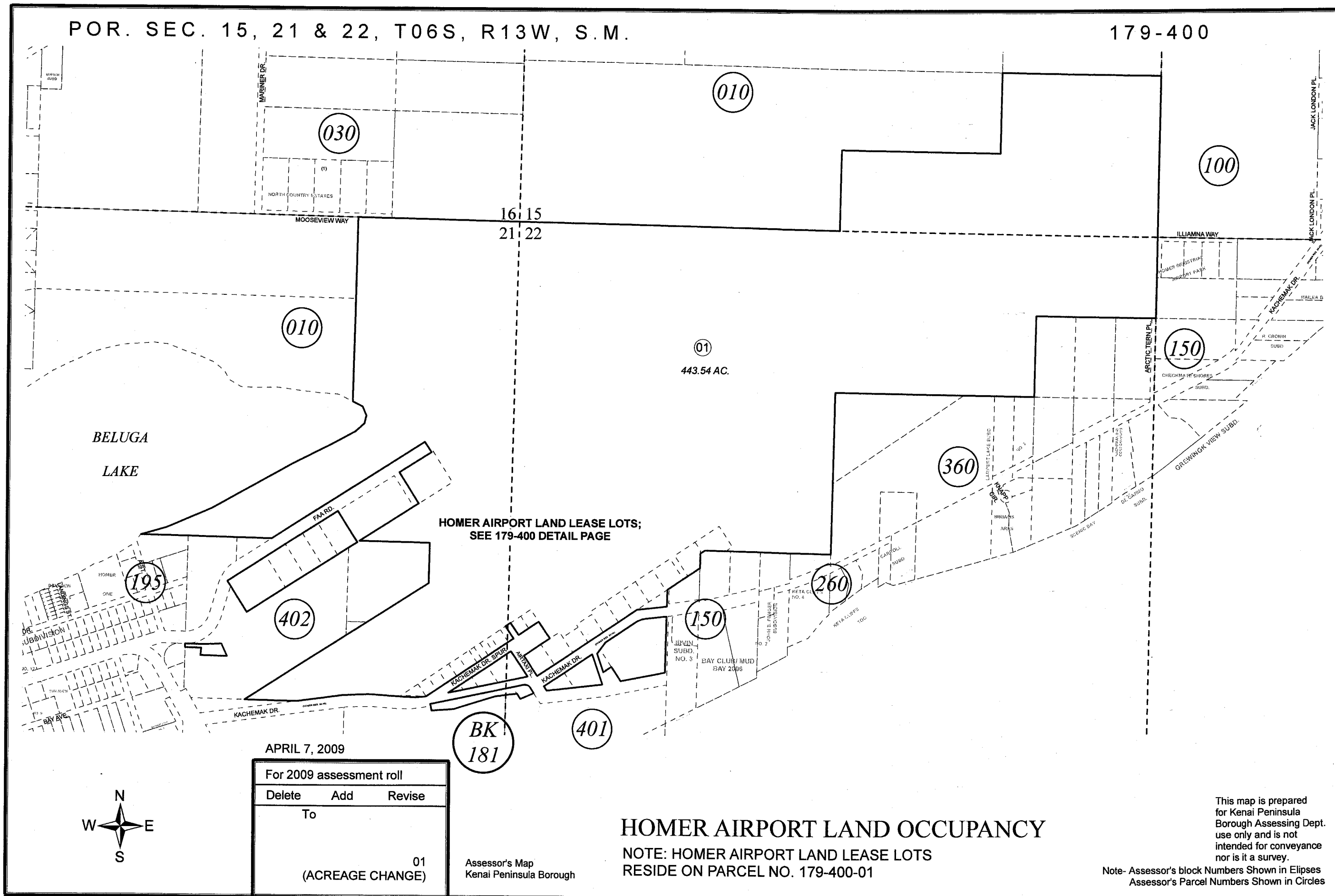


POR. SEC. 15, 21 & 22, T06S, R13W, S.M.

179-400



APRIL 7, 2009

For 2009 assessment roll		
Delete	Add	Revise
To		
		01
(ACREAGE CHANGE)		

Assessor's Map
Kenai Peninsula Borough

HOMER AIRPORT LAND OCCUPANCY

NOTE: HOMER AIRPORT LAND LEASE LOTS
RESIDE ON PARCEL NO. 179-400-01

This map is prepared for Kenai Peninsula Borough Assessing Dept. use only and is not intended for conveyance nor is it a survey.
Note- Assessor's block Numbers Shown in Ellipses
Assessor's Parcel Numbers Shown in Circles