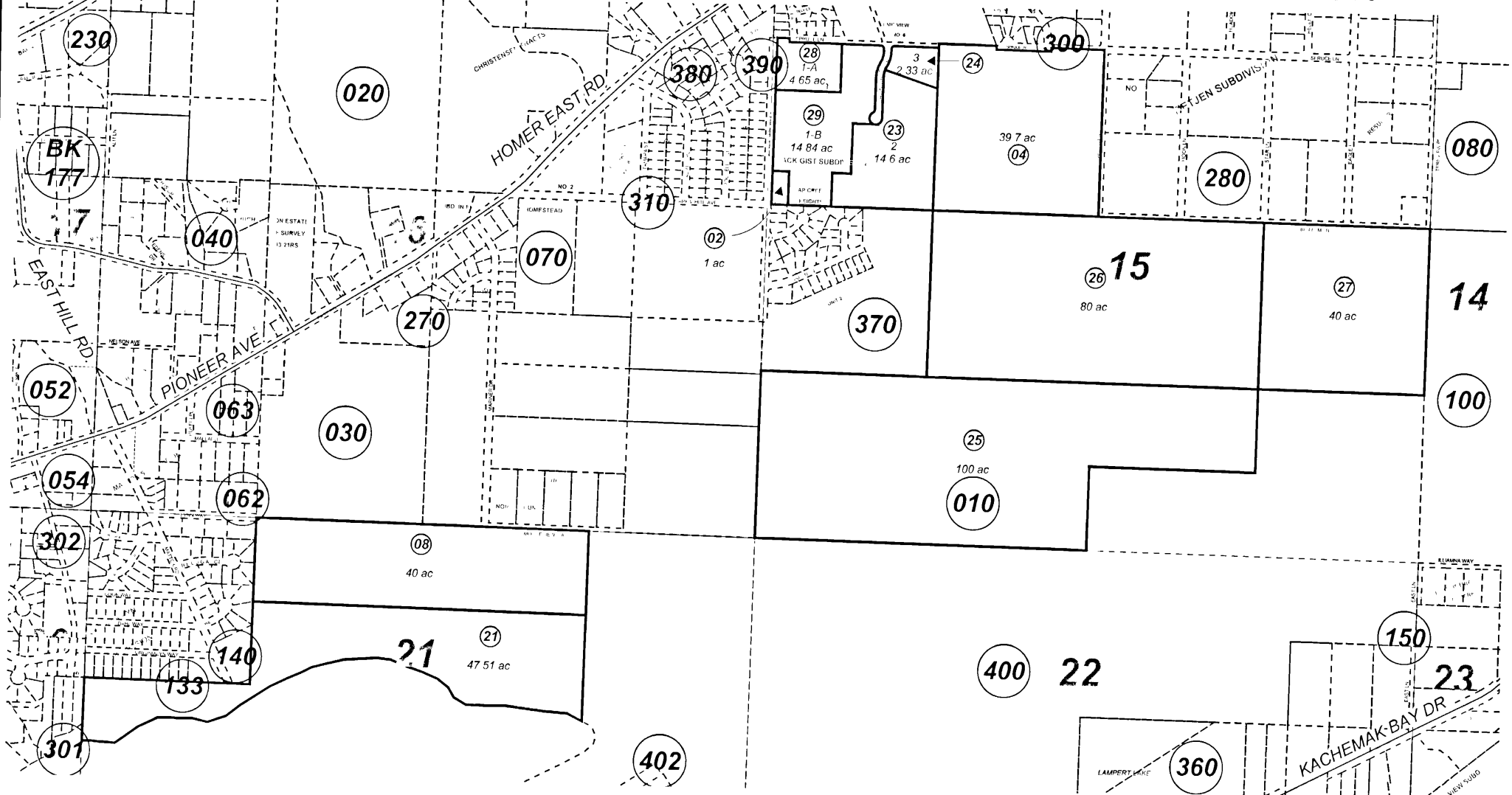


POR. SEC. 21 & 15, T06S, R13W, S.M.

179-010



SEPTEMBER 13, 2002

For 2003 assessment roll

Delete	Add	Revise

To

22	28,29
----	-------

Assessor's Map
Kenai Peninsula Borough

JACK GIST SUB HM0990063
JACK GIST SUB NO 2 HM2002027



This map is prepared for Kenai Peninsula Borough Assessing Dept use only and is not intended for conveyance nor is it a survey

Note- Assessor's block Numbers Shown in Ellipses
Assessor's Parcel Numbers Shown in Circles