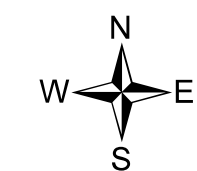
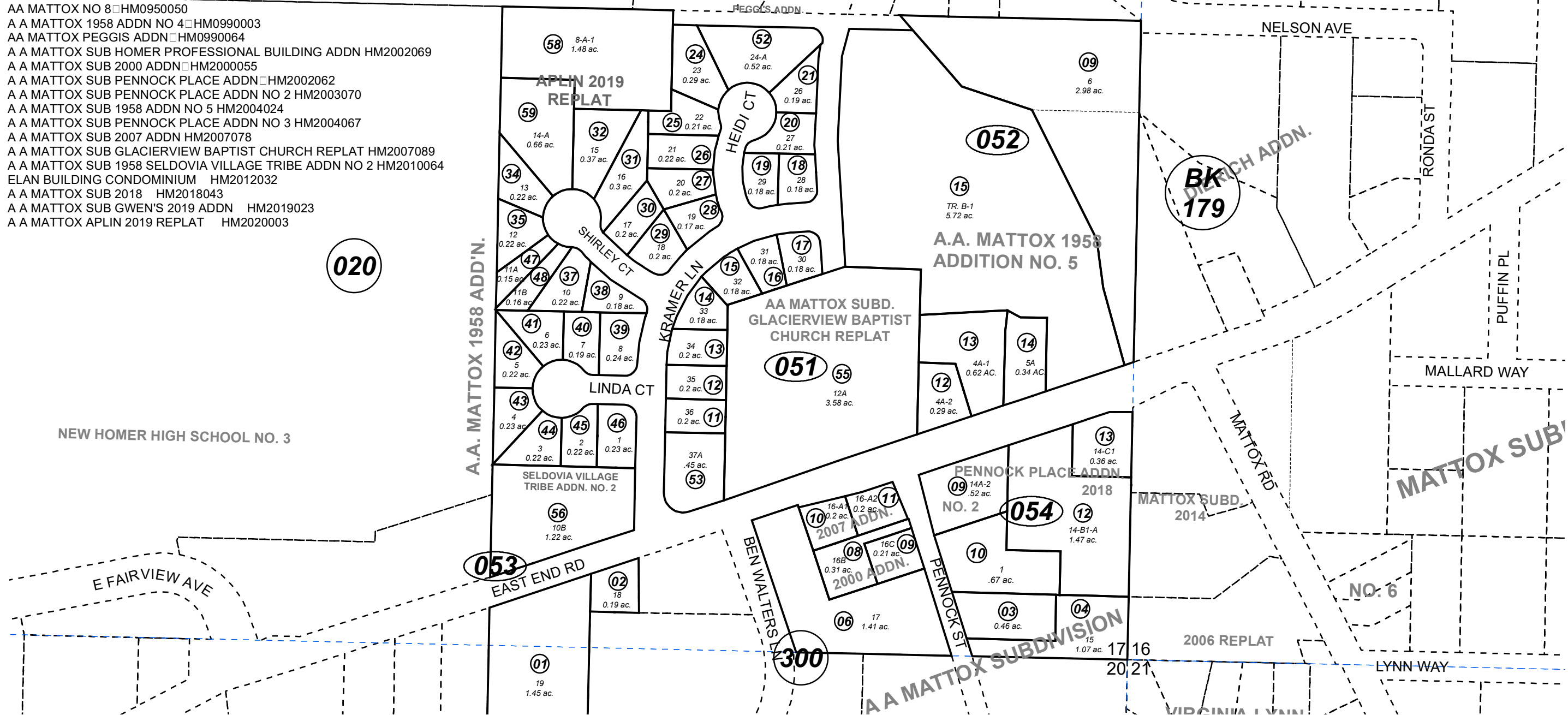


SE1/4 SE1/4 SEC. 17 & NE1/4 NE1/4 SEC. 20, T06S, R13W, S.M.

177-050

UNIT 2

- A A MATTOX SUB 1958 ADDN HM0003746
- A A MATTOX SUB 1958 ADDN UNIT 2 AMENDED HM0840008
- A A MATTOX SUB 1958 ADDN UNIT 2 REPLAT HM0850125
- A A MATTOX SUB 1958 ADDN NO 3 HM0900021
- AA MATTOX NO 8 HM0950050
- A A MATTOX 1958 ADDN NO 4 HM0990003
- AA MATTOX PEGGIS ADDN HM0990064
- A A MATTOX SUB HOMER PROFESSIONAL BUILDING ADDN HM2002069
- A A MATTOX SUB 2000 ADDN HM2000055
- A A MATTOX SUB PENNOCK PLACE ADDN HM2002062
- A A MATTOX SUB PENNOCK PLACE ADDN NO 2 HM2003070
- A A MATTOX SUB 1958 ADDN NO 5 HM2004024
- A A MATTOX SUB PENNOCK PLACE ADDN NO 3 HM2004067
- A A MATTOX SUB 2007 ADDN HM2007078
- A A MATTOX SUB GLACIERVIEW BAPTIST CHURCH REPLAT HM2007089
- A A MATTOX SUB 1958 SELDOVIA VILLAGE TRIBE ADDN NO 2 HM2010064
- ELAN BUILDING CONDOMINIUM HM2012032
- A A MATTOX SUB 2018 HM2018043
- A A MATTOX SUB GWEN'S 2019 ADDN HM2019023
- A A MATTOX APLIN 2019 REPLAT HM2020003



0 50 100 200 Feet

APRIL 20, 2020

For 2021 assessment roll		
Delete	Add	Revise
To		
05133		
05157	05158-59	

Assessor's Map
Kenai Peninsula Borough

This map is prepared for Kenai Peninsula Borough Assessing Dept. use only and is not intended for conveyance nor is it a survey.

Note- Assessor's block Numbers Shown in Ellipses
Assessor's Parcel Numbers Shown in Circles