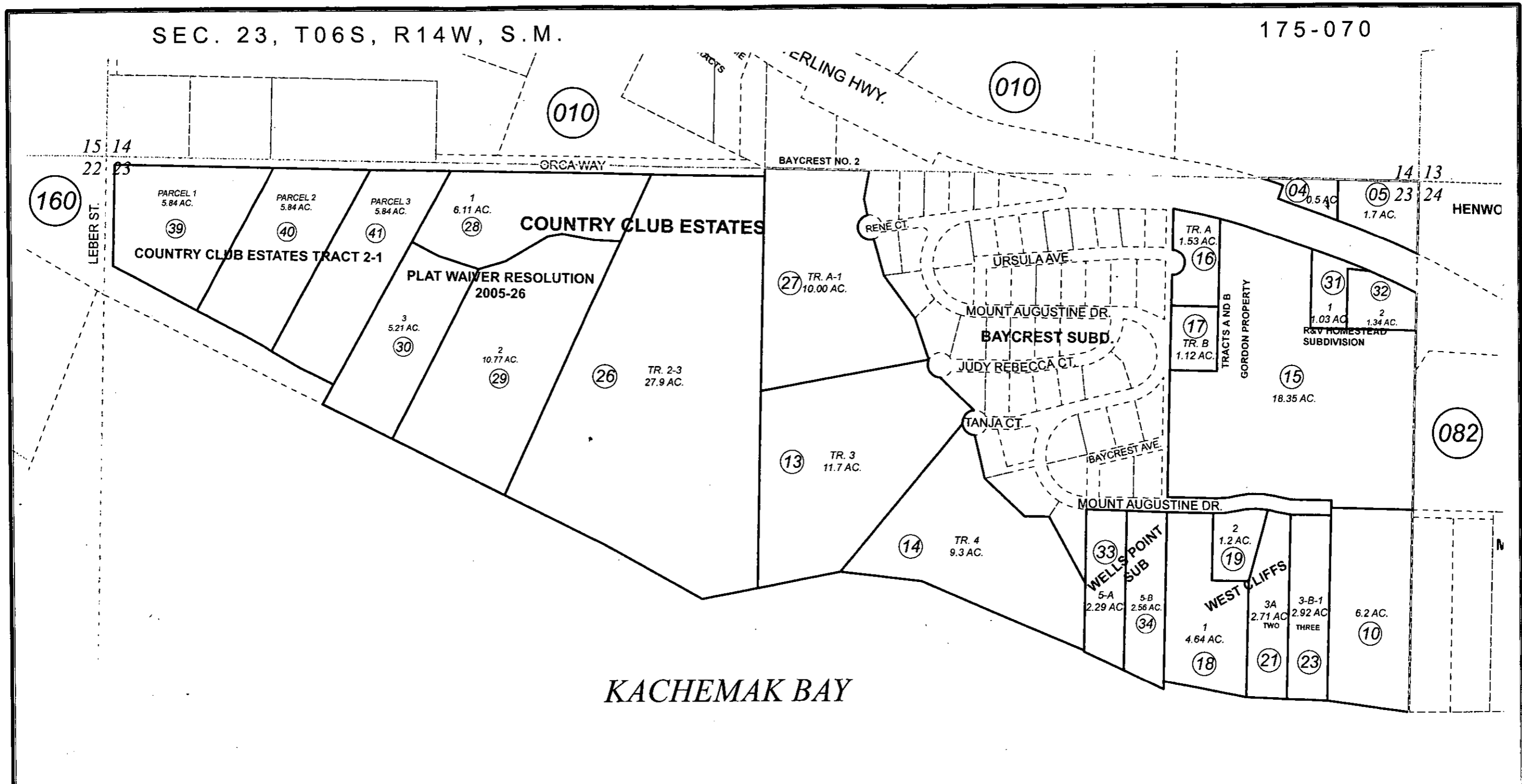


SEC. 23, T06S, R14W, S.M.

175-070



KACHEMAK BAY

AUGUST 11, 2011

For 2012 assessment roll		
Delete	Add	Revise
To		
35-38	39-41	



1 inch = 400 feet

Assessor's Map
Kenai Peninsula Borough

- COUNTRY CLUB ESTATES HM0760075
- COUNTRY CLUB ESTATES SUB HM0760075
- TRACTS A & B GORDON PROPERTY HM0770082
- WEST CLIFFS SUB HM0830112
- WEST CLIFF TWO SUB HM0840068
- WEST CLIFFS THREE SUB HM0840120
- COUNTRY CLUB ESTATES FAIRVIEW AVE VACATION REPLAT HM2004100
- PLAT WAIVER RESOLUTION 2005-26 HM2005-003307-0
- R & V HOMESTEAD SUB HM2005103
- WELLS POINT SUB HM2008067
- PLAT WAIVER RESOLUTION 2007-06 HM2008-004451-0
- COUNTRY CLUB ESTATES TRACT 2-1 HM2011-001104-0

This map is prepared for Kenai Peninsula Borough Assessing Dept. use only and is not intended for conveyance nor is it a survey.

Note- Assessor's block Numbers Shown in Ellipses
Assessor's Parcel Numbers Shown in Circles