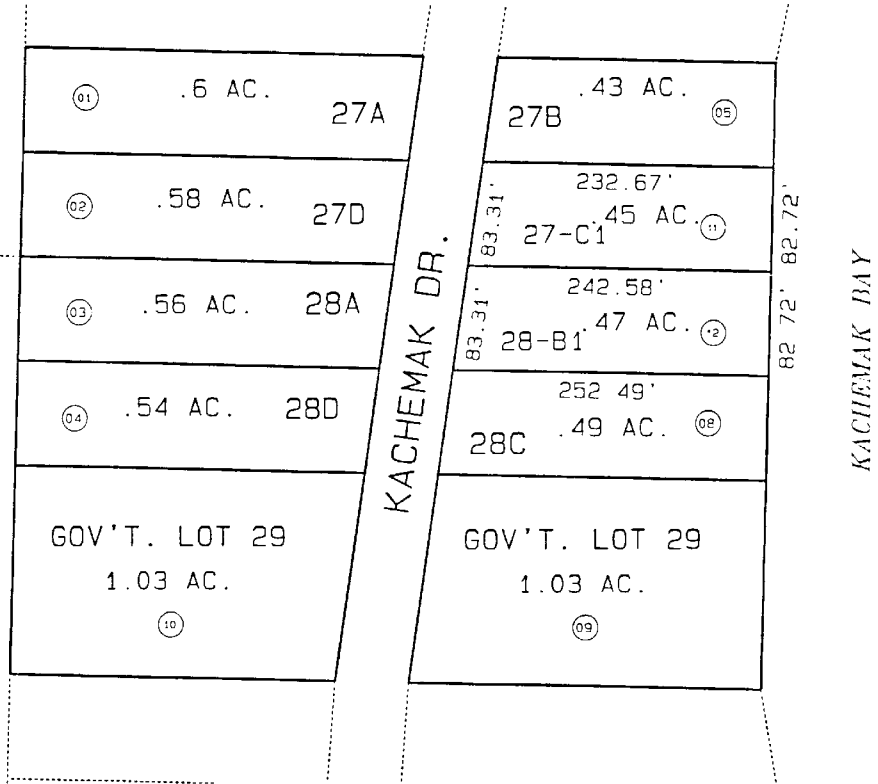


8

8

8



DATE JAN 27, 2000

FOR 2000 ASSESSMENT ROLL		
DELETE	ADD	REVISED
TO		
6,7	11,12	

Assessor's Map
Kenai Peninsula Borough

RECORD OF SURVEY LOT 29 HM680003RS
UMINSKI 1997 ADDN A HM990080

THIS MAP IS PREPARED FOR KENAI PENINSULA BOROUGH ASSESSING DEPT. USE ONLY AND IS NOT INTENDED FOR CONVEYANCE NOR IS IT A SURVEY. NOTE - Assessor's Block Numbers Shown in Ellipses Assessor's Parcel Numbers Shown in Circles