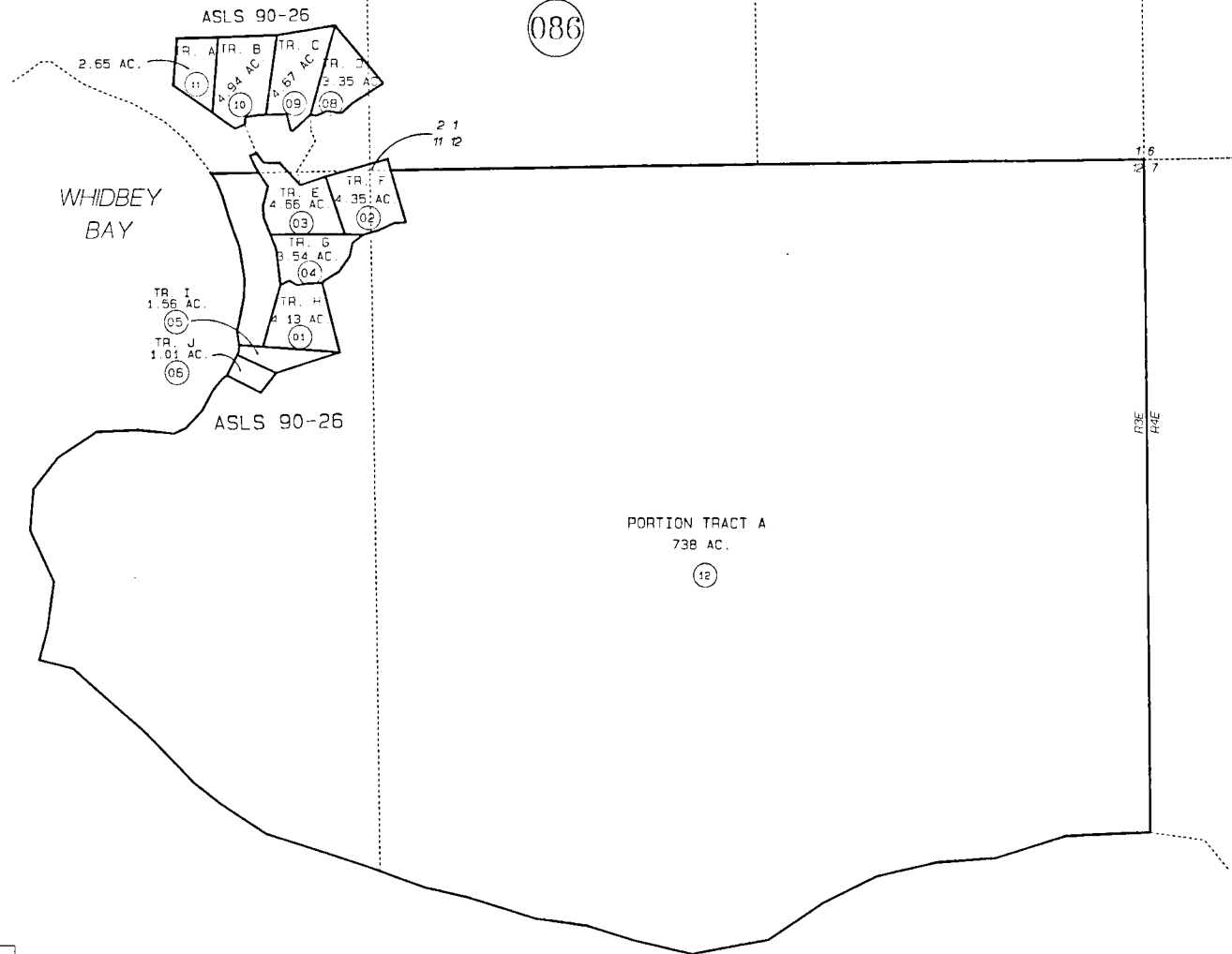


SEC. 11 & 12, T3S, R3E, S.M.

189-087



DATE: DEC. 28, 1999

FOR 2000 ASSESSMENT ROLL

DELETE	ADD	REVISED
7	TO	12

Assessor's Map
Kenai Peninsula Borough

SW920006 ALASKA STATE LAND SURVEY 90-26

THIS MAP IS PREPARED FOR KENAI PENINSULA BOROUGH ASSESSING DEPT USE ONLY AND IS NOT INTENDED FOR CONVEYANCE. NOR IS IT A SURVEY.

NOTE - Assessor's Block Numbers Shown in Ellipses
Assessor's Parcel Numbers Shown in Circles