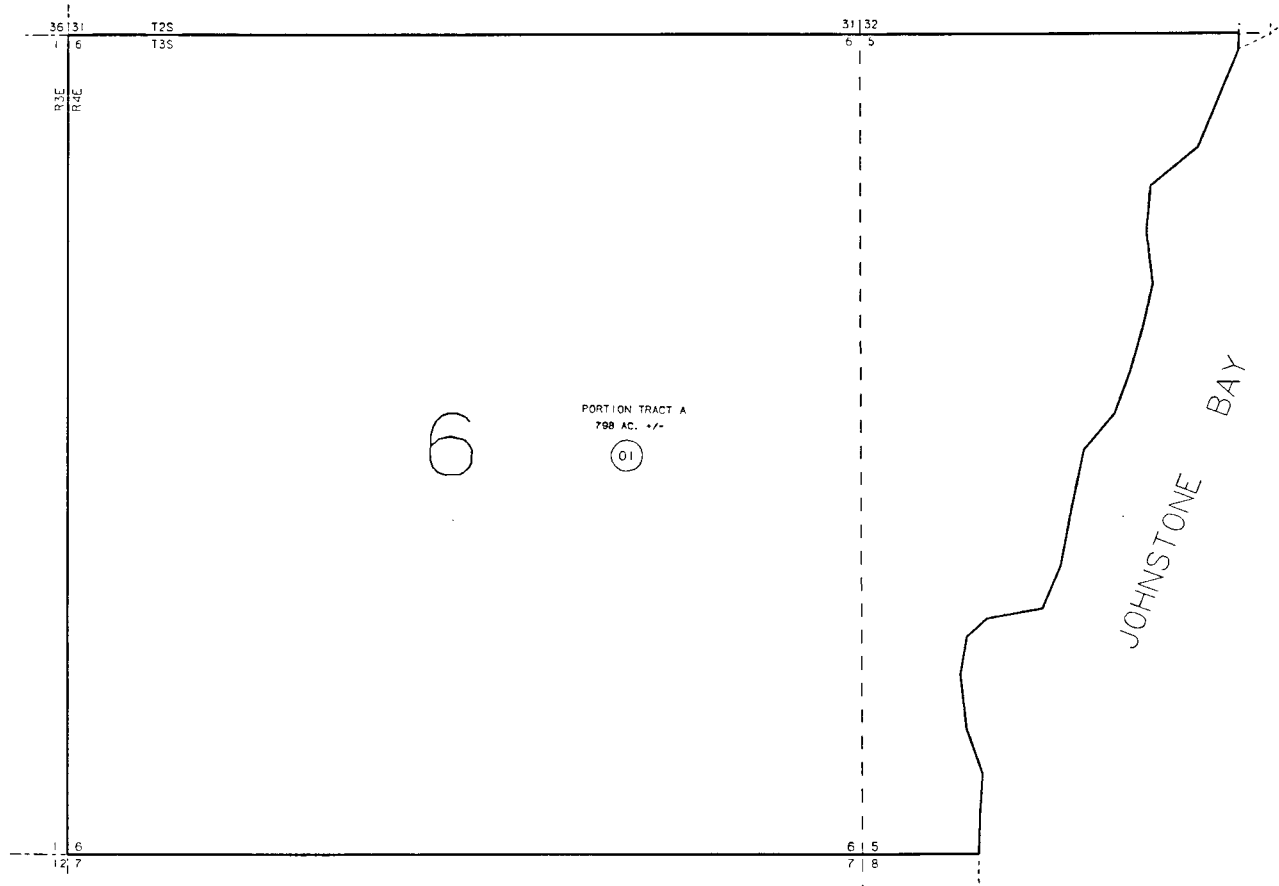


SECTIONS 5 & 6, T3S, R4E, SEWARD MERIDIAN

189-089

019



DATE: JULY 2, 1993

FOR 19_94 ASSESSMENT ROLL		
DELETE	ADD	REVISED
TO		
01		

087

NOTE - Assessor's Block Numbers Shown In Ellipses
 Assessor's Parcel Numbers Shown In Circles

Assessor's Map
 Kenai Peninsula Borough

THIS MAP IS PREPARED FOR KENAI PENINSULA BOROUGH ASSESSING DEPT. USE ONLY AND IS NOT INTENDED FOR ANY OTHER USE OR REPRESENTATION