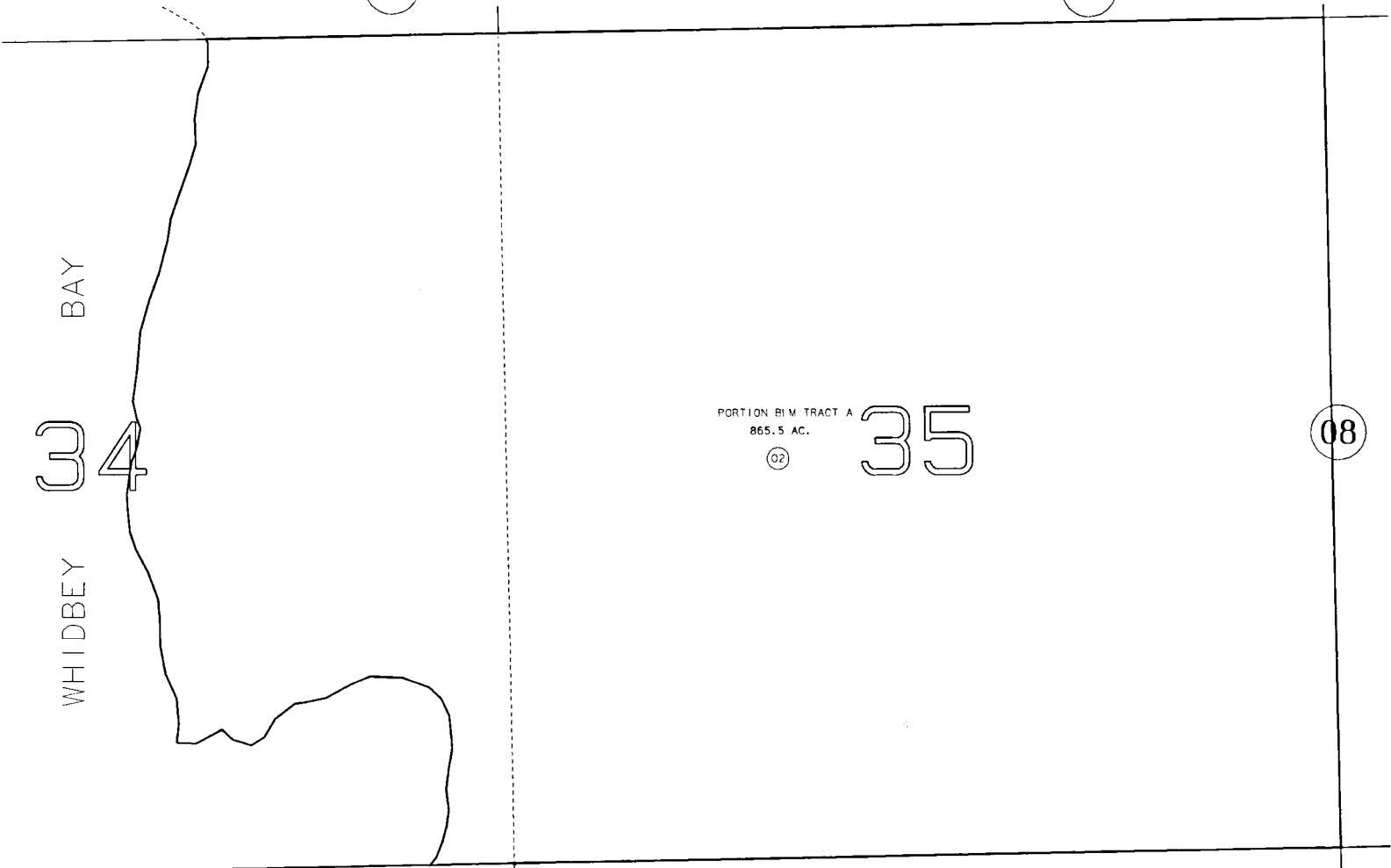


SECTIONS 34 & 35, T2S, R3E, SEWARD MERIDIAN

189-085

082

08



BAY

34

WHIDBEY

PORTION BLM TRACT A  
865.5 AC.

35

08

086



DATE AUGUST 23, 1993		
FOR 1994 ASSESSMENT ROLL		
DELETE	ADD	REVISED
TO		
01	02	

NOTE - Assessor's Block Numbers Shown In Ellipses  
Assessor's Parcel Numbers Shown In Circles

Assessor's Map  
Kenai Peninsula Borough

THIS MAP IS PREPARED  
FOR KENAI PENINSULA  
BOROUGH ASSESSING DEPT.  
USE ONLY AND IS NOT  
INTENDED FOR ANY  
OTHER USE OR REPRESENTATION