

SEC. 29 & W1/2 SEC. 28, T02S, R03E, S.M.

189-081

225

080

082

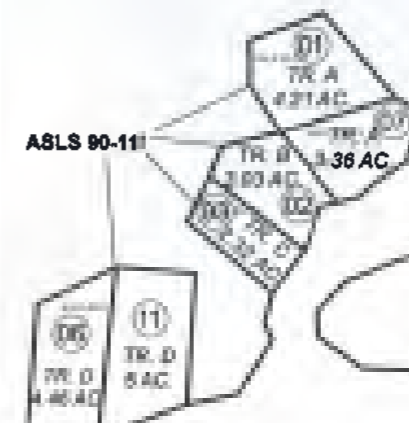
12

POR. BLM TRACT A
757.55 AC.

29

ASLS 90-11

ASLS 88-219



28

ASLS 86-21

WHIDBEY BAY

314

OCTOBER 11, 2012

For 2013 assessment roll

Delete	Add	Revise
09		12
(ACREAGE CHANGE)		

To

09

12

(ACREAGE CHANGE)



Assessor's Map
Kenai Peninsula Borough

ALASKA STATE LAND SURVEY 90-111 SW0920008
ALASKA STATE LAND SURVEY 86-219 SW0890016

This map is prepared for Kenai Peninsula Borough Assessing Dept. use only and is not intended for conveyance nor is it a survey.

Note- Assessor's block Numbers Shown in Elipses
Assessor's Parcel Numbers Shown in Circles