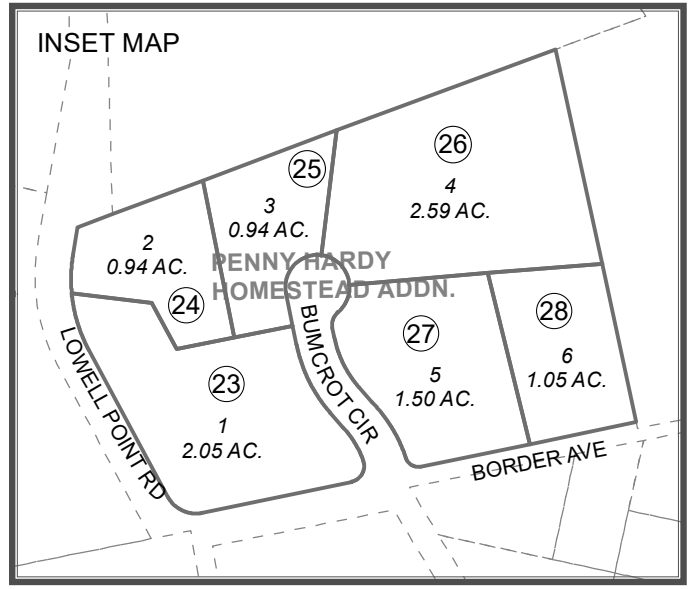
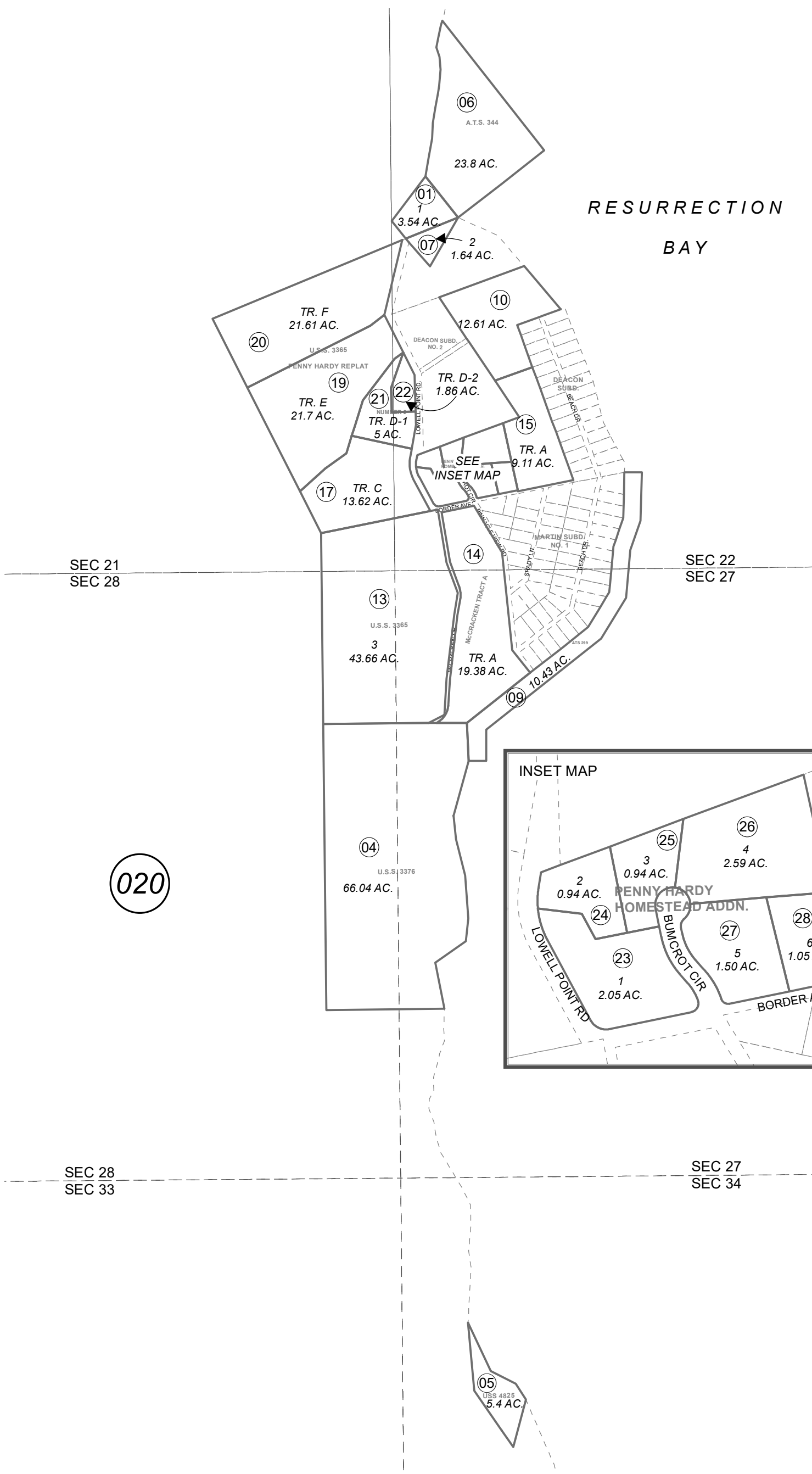
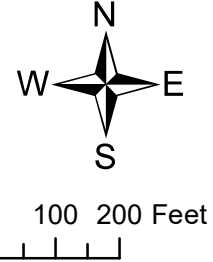


POR. SEC. 21, 22, 27, 28 & 34, T01S, R1W, S.M.

189-190



020



OCTOBER 15, 2020

For 2021 assessment roll	
Delete	Revise
	To
16	23-28

ALASKA TIDELANDS SURVEY 344
 US SURVEY 3365 SW0003365
 US SURVEY 3376 SW0003376
 US SURVEY 4825 RESURRECTION BAY SW0004825
 MCCRACKEN TRACT A SW0920005
 USS 3365 PENNY HARDY REPLAT SW2008011
 USS 3365 PENNY HARDY REPLAT NUMBER 2 SW2009021
 PENNY HARDY HOMESTEAD ADDN SW2020008

Assessor's Map
 Kenai Peninsula Borough

This map is prepared
 for Kenai Peninsula
 Borough Assessing Dept.
 use only and is not
 intended for conveyance
 nor is it a survey.

Note- Assessor's block Numbers Shown in Ellipses
 Assessor's Parcel Numbers Shown in Circles