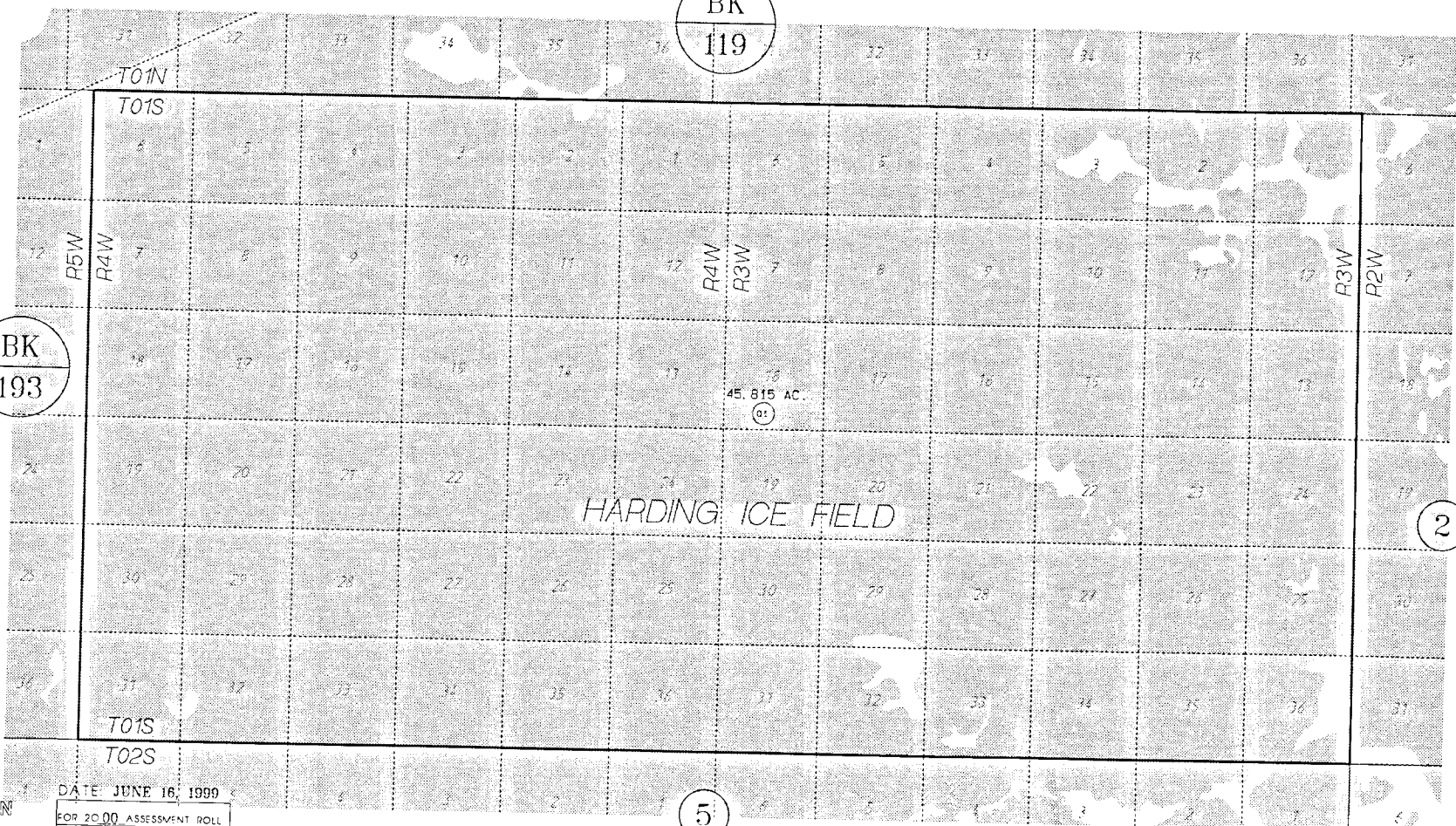


T1S, R3W, R4W, SEWARD MERIDIAN

189-010

BK
119

BK
193



DATE JUNE 16, 1999
 FOR 20.00 ASSESSMENT ROLL
 DELETE ADD REVISED
 TO
 REVISED
 PAGE

Assessor's Map
 Kenai Peninsula Borough

THIS MAP IS PREPARED FOR KENAI PENINSULA BOROUGH ASSESSING DEPT USE ONLY AND IS NOT INTENDED FOR ANY OTHER USE OR REPRESENTATION.
 NOTE - Assessor's Block Numbers Shown in Ellipses
 Assessor's Parcel Numbers Shown in Circles