

S 1/2 SEC. 34, T01S & N 1/2 N 1/2 SEC. 3, T02S, R12W, S.M.

185-507

34

506

494

508

496

512

DECEMBER 13, 2011

For 2012 assessment roll		
Delete	Add	Revise
14,15	32-38	

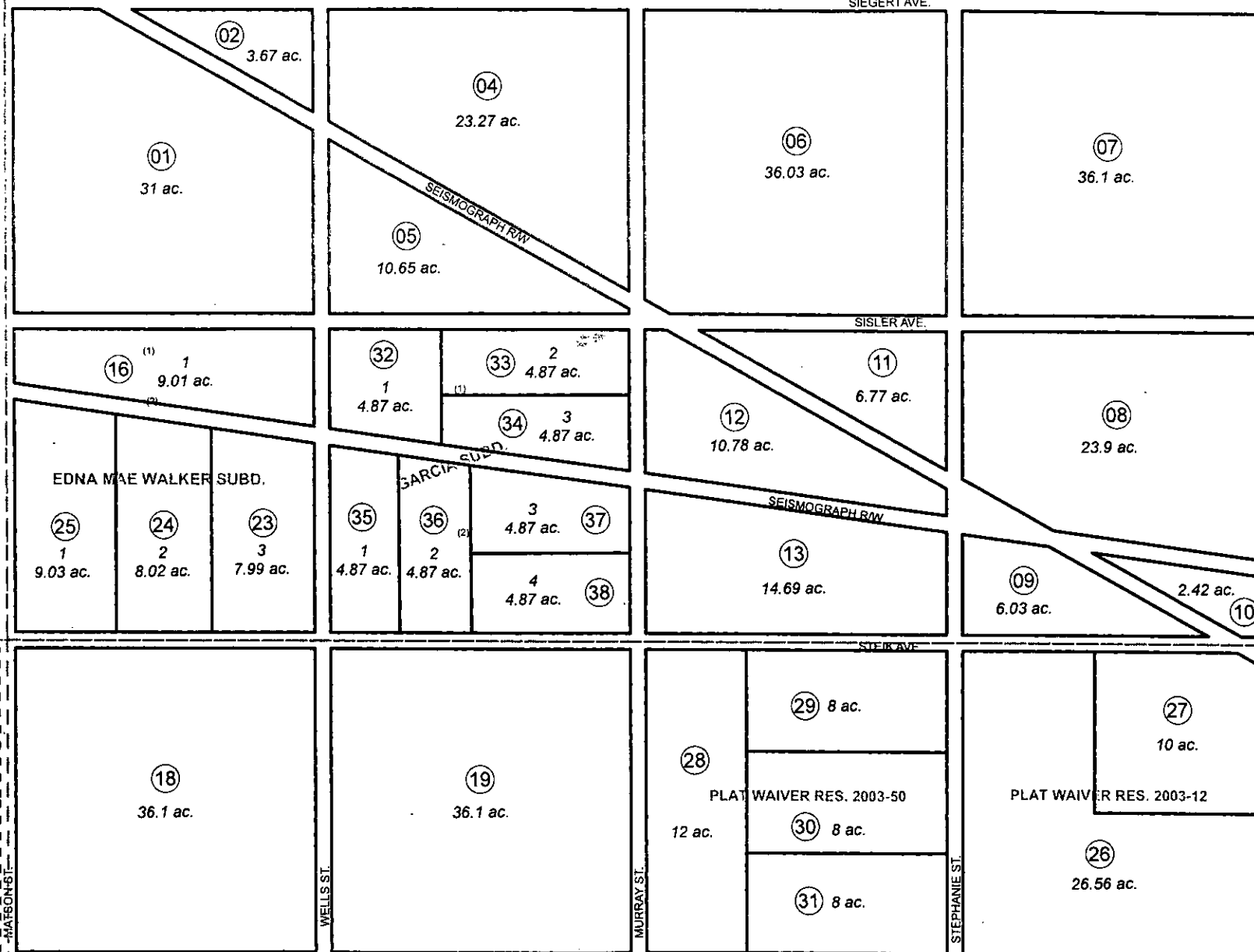


0 150 300 600 Feet

Assessor's Map  
Kenai Peninsula Borough

EDNA MAE WALKER SUB HM0880053  
 PLAT WAIVER RES 2003-12 HM2003-002336  
 PLAT WAIVER RES 2003-50 HM2003-006317  
 GARCIA SUB HM2011043

Note- Assessor's block Numbers Shown in Ellipses  
 Assessor's Parcel Numbers Shown in Circles



This map is prepared for Kenai Peninsula Borough Assessing Dept. use only and is not intended for conveyance nor is it a survey.