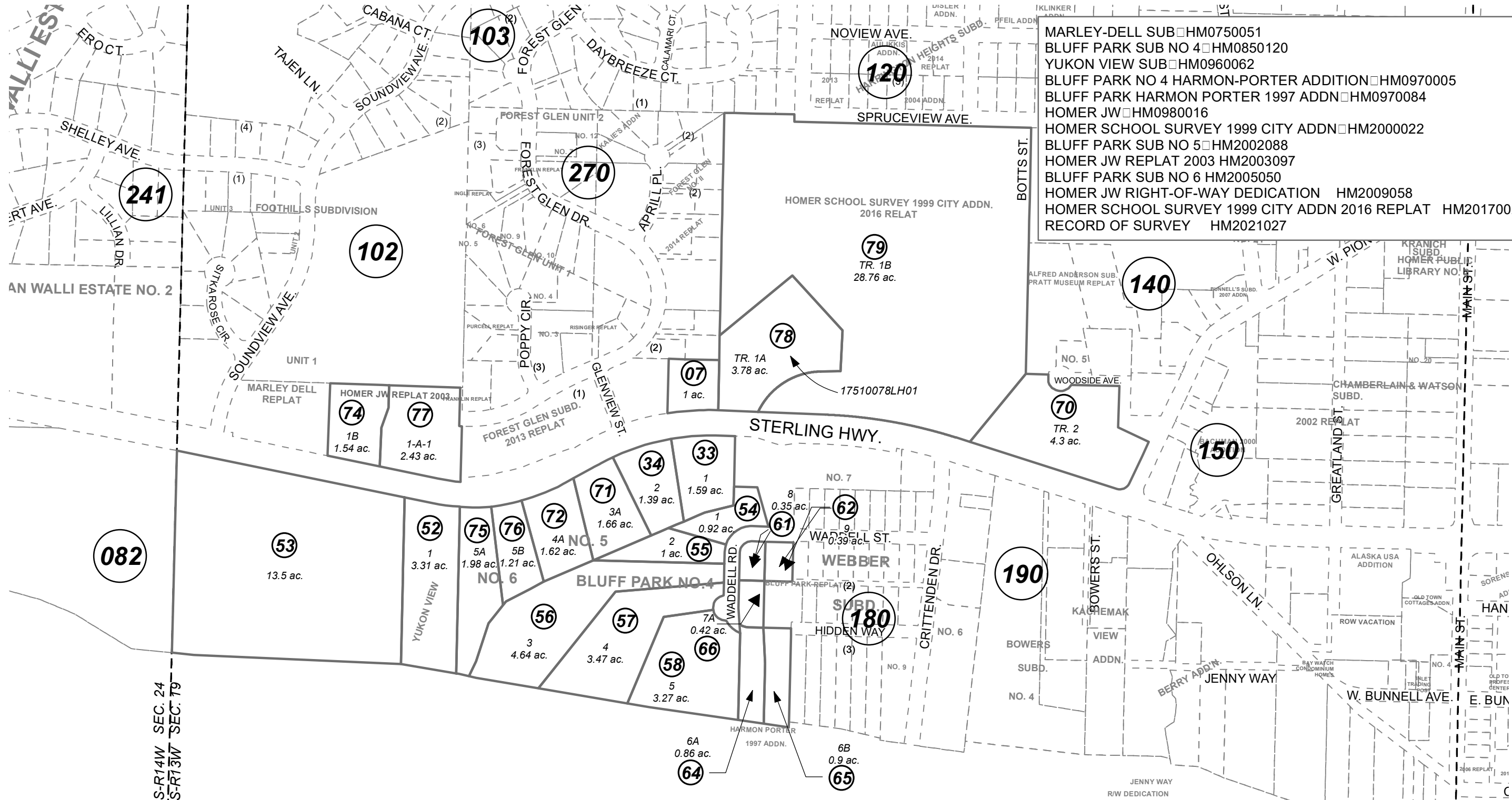


MARLEY-DELL SUB □ HM0750051
 BLUFF PARK SUB NO 4 □ HM0850120
 YUKON VIEW SUB □ HM0960062
 BLUFF PARK NO 4 HARMON-PORTER ADDITION □ HM0970005
 BLUFF PARK HARMON PORTER 1997 ADDN □ HM0970084
 HOMER JW □ HM0980016
 HOMER SCHOOL SURVEY 1999 CITY ADDN □ HM2000022
 BLUFF PARK SUB NO 5 □ HM2002088
 HOMER JW REPLAT 2003 HM2003097
 BLUFF PARK SUB NO 6 HM2005050
 HOMER JW RIGHT-OF-WAY DEDICATION HM2009058
 HOMER SCHOOL SURVEY 1999 CITY ADDN 2016 REPLAT HM2017002
 RECORD OF SURVEY HM2021027



082

74 1B 1.54 ac.
 77 1-A-1 2.43 ac.

78 TR. 1A 3.78 ac.

79 TR. 1B 28.76 ac.

70 TR. 2 4.3 ac.

52 1 3.31 ac.

75 5A 1.98 ac.

76 5B 1.21 ac.

72 4A 1.62 ac.

71 3A 1.66 ac.

34 2 1.39 ac.

33 1 1.59 ac.

54 8 0.35 ac.

62 9 0.39 ac.

55 2 1 ac.

53 13.5 ac.

56 3 4.64 ac.

57 4 3.47 ac.

58 5 3.27 ac.

66 7A 0.42 ac.

64 6A 0.86 ac.

65 6B 0.9 ac.

190

150

103

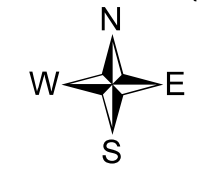
120

241

102

270

140



0 200 400 Feet

SEPTEMBER 7, 2021

For 2022 assessment roll		
Delete	Add	Revise
To		72
		(REVISED ACREAGE)

Assessor's Map
 Kenai Peninsula Borough

This map is prepared for Kenai Peninsula Borough Assessing Dept. use only and is not intended for conveyance nor is it a survey.

Note- Assessor's block Numbers Shown in Elipses
 Assessor's Parcel Numbers Shown in Circles