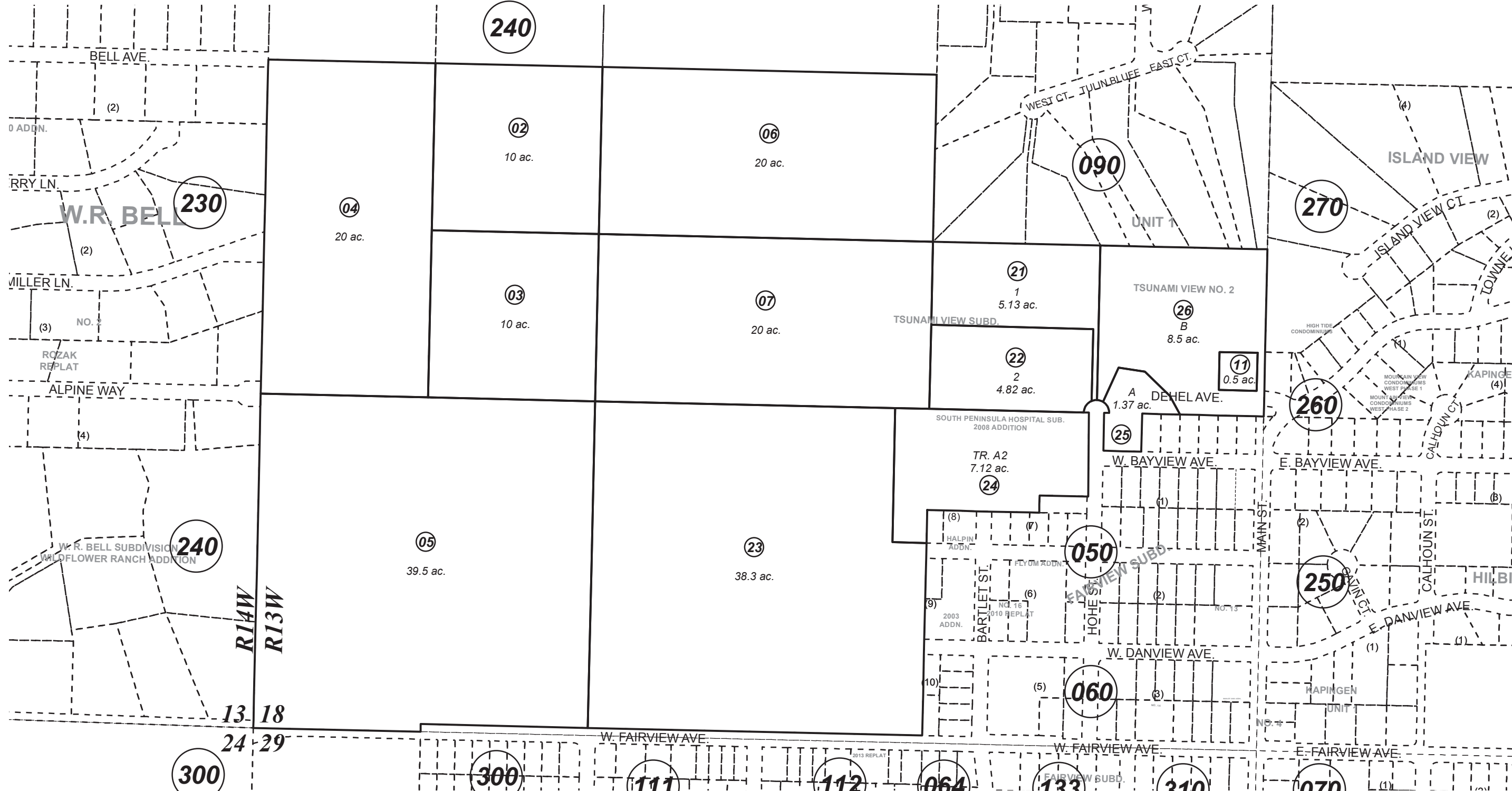


POR. S1/2 SEC. 18, T06S, R13W, S.M.

175-040



0 125 250 500 Feet

JUNE 4, 2018

For 2019 assessment roll		
Delete	Add	Revise
	To	
16	25,26	

Assessor's Map
Kenai Peninsula Borough

SOUTH PENINSULA HOSPITAL SUB 2005 ADDN HM2006038
 TSUNAMI VIEW SUB HM2007086
 SOUTH PENINSULA HOSPITAL SUB 2008 ADDN HM2008092
 TSUNAMI VIEW SUB NO 2 HM2018005

This map is prepared for Kenai Peninsula Borough Assessing Dept. use only and is not intended for conveyance nor is it a survey.
 Note- Assessor's block Numbers Shown in Ellipses
 Assessor's Parcel Numbers Shown in Circles