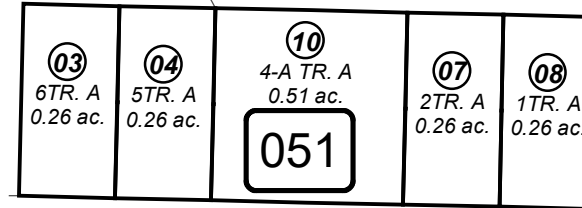


040

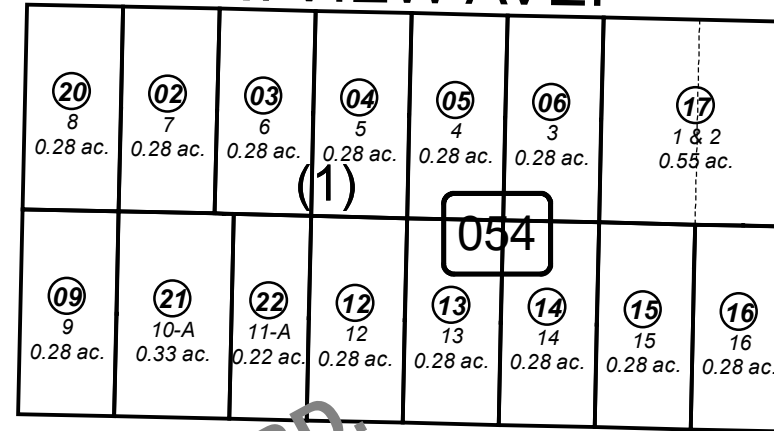
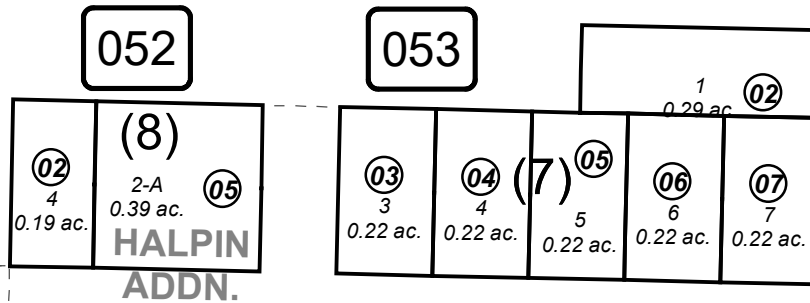
DEHEL AVE.

SOUTH PENINSULA HOSPITAL SUB.  
2008 ADDITION



W. BAYVIEW AVE.

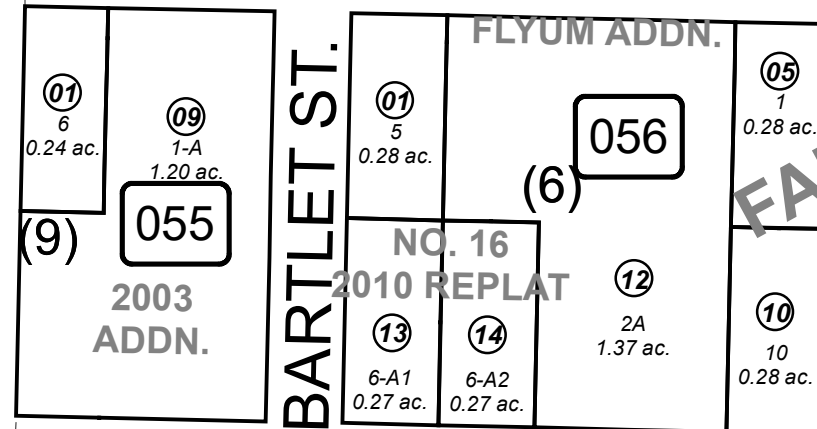
E. BAYVIEW AVE



MAIN ST.

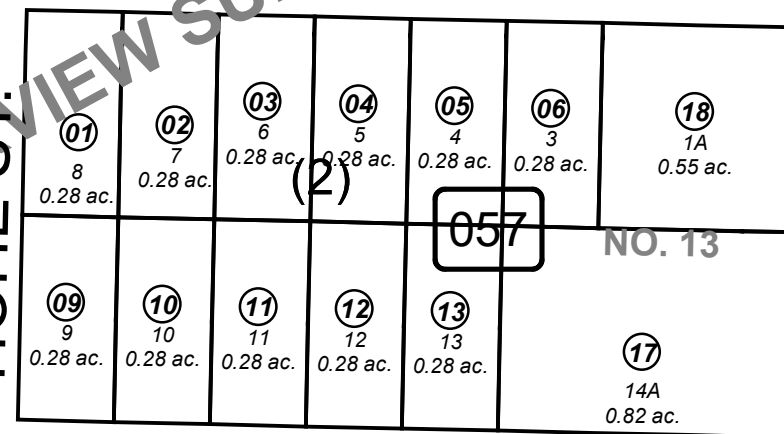
BK  
177

040



BARTLET ST.

HOHE ST.



W. DANVIEW AVE.

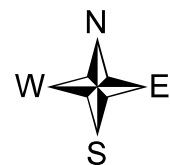
060

- FAIRVIEW SUB HM0562936
- FAIRVIEW SUB NO 8 HM0820018
- FAIRVIEW SUB NO 9 HM0820022
- FAIRVIEW SUB NO 10 HM0840075
- FAIRVIEW RESUB NO 13 HM0960011
- FAIRVIEW FIFTEEN HM2000011
- FAIRVIEW SUB 2002 ADDN HM2002074
- FAIRVIEW SUB 2003 ADDN HM2004101
- FAIRVIEW SUB FLYUM ADDN HM2005061
- FAIRVIEW SUB NEHUS ADDN HM2008096
- FAIRVIEW SUB HALPIN ADDN HM2009043
- FAIRVIEW SUB NO 16 2010 REPLAT HM2010027
- RECORD OF SURVEY HM2015009
- FAIRVIEW SUB THE SHIRE HM2019044

JANUARY 9, 2020

For 2020 assessment roll		
Delete	Add	Revise
To		
05105,06	05110	

Assessor's Map  
Kenai Peninsula Borough



0 50 100 200 Feet

This map is prepared for Kenai Peninsula Borough Assessing Dept. use only and is not intended for conveyance nor is it a survey.

Note- Assessor's block Numbers Shown in Ellipses  
Assessor's Parcel Numbers Shown in Circles