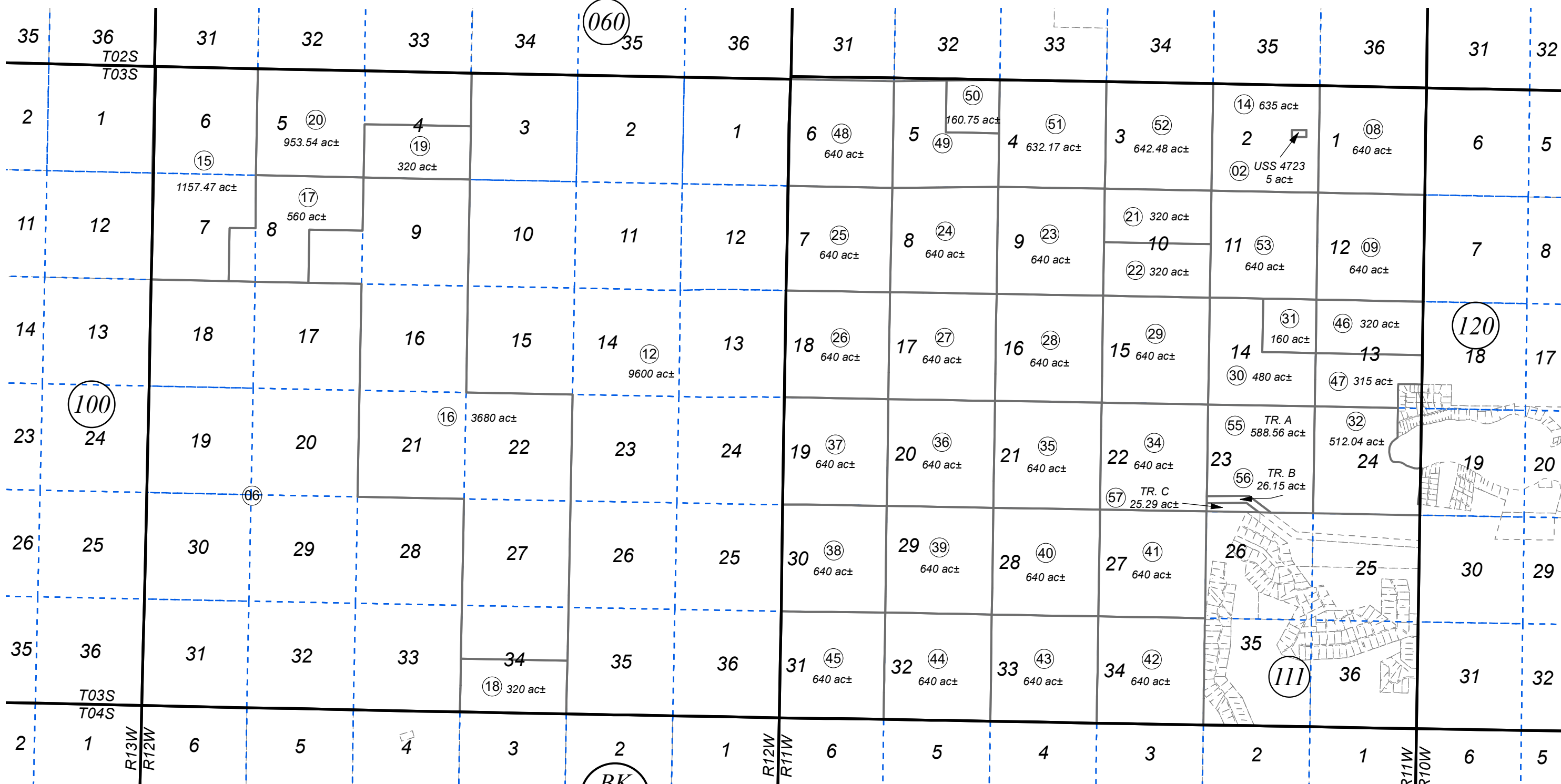
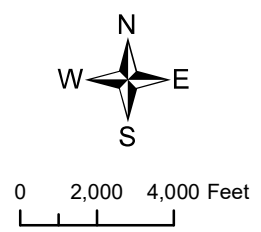


T03S, R11W, R12W, S.M.

185-110



NOVEMBER 30, 2023



For 2024 assessment roll		
Delete	Add	Revise
To		
11		12
(REVISED ACREAGE)		

Assessor's Map
Kenai Peninsula Borough

A.S.L.S. 91-38

This map is prepared for Kenai Peninsula Borough Assessing Dept. use only and is not intended for conveyance nor is it a survey.
Note- Assessor's block Numbers Shown in Elipses
Assessor's Parcel Numbers Shown in Circles