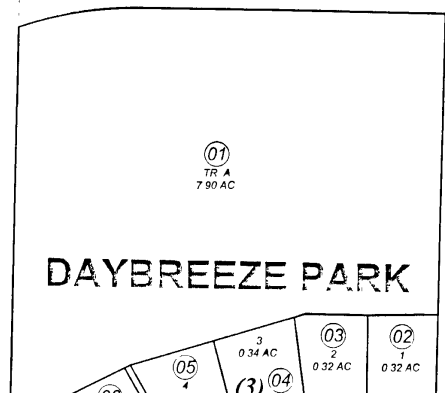


040

W. FAIRVIEW AVE.



300

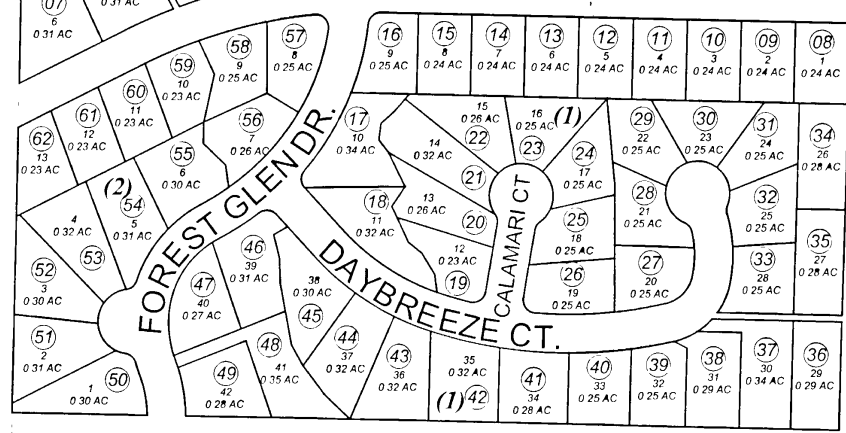
RANGEVIEW AVE.

HOMER ENTERP

102

FOOTHILLS SUBDIVISION

SOUNDVIEW AVE.



120

NOVIEW AVE.

DISLER ADDN

HARRINGTON HEIR

BERGMAN ADDN

FOREST GLEN UNIT 2

SPRUCEVIEW AVE.

270



JANUARY 5, 2003

For 2004 assessment roll		
Delete	Add	Revise
To		
NEW PAGE		

Assessor's Map  
Kenai Peninsula Borough

DAYBREEZE PARK HM2003054

This map is prepared for Kenai Peninsula Borough Assessing Dept use only and is not intended for conveyance nor is it a survey

Note- Assessor's block Numbers Shown in Ellipses  
Assessor's Parcel Numbers Shown in Circles